

Product Datasheet

Smad1 [p Ser206] Antibody - BSA Free NBP1-77858

Unit Size: 0.1 mg

Store at -20C short term. Aliquot and store at -80C long term. Avoid freeze-thaw cycles.

www.novusbio.com



technical@novusbio.com

Protocols, Publications, Related Products, Reviews, Research Tools and Images at:
www.novusbio.com/NBP1-77858

Updated 2/21/2025 v.20.1

Earn rewards for product
reviews and publications.

Submit a publication at www.novusbio.com/publications

Submit a review at www.novusbio.com/reviews/destination/NBP1-77858



NBP1-77858

Smad1 [p Ser206] Antibody - BSA Free

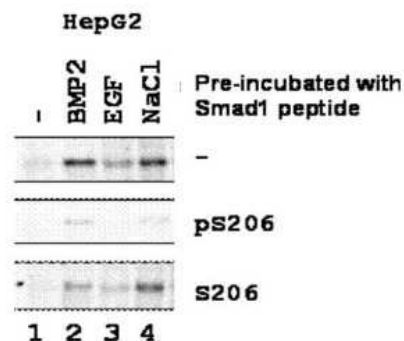
| Product Information | |
|-------------------------|---|
| Unit Size | 0.1 mg |
| Concentration | Please see the vial label for concentration. If unlisted please contact technical services. |
| Storage | Store at -20C short term. Aliquot and store at -80C long term. Avoid freeze-thaw cycles. |
| Clonality | Polyclonal |
| Preservative | 0.01% Sodium Azide |
| Isotype | IgG |
| Purity | Immunogen affinity purified |
| Buffer | 0.02 M Potassium Phosphate, 0.15 M Sodium Chloride, pH 7.2 |
| Product Description | |
| Description | <p>This affinity-purified antibody is directed against the phosphorylated form of human SMAD1 protein at the [p Ser206] residue. The product was affinity purified from monospecific antiserum by immunoaffinity purification. Antiserum was first purified against the phosphorylated form of the immunizing peptide. The resultant affinity purified antibody was then cross adsorbed against the non-phosphorylated form of the immunizing peptide</p> <p>Store vial at -20C prior to opening. Aliquot contents and freeze at -20C or below for extended storage. Avoid cycles of freezing and thawing. Centrifuge product if not completely clear after standing at room temperature. This product is stable for several weeks at 4C as an undiluted liquid. Dilute only prior to immediate use.</p> |
| Host | Rabbit |
| Gene ID | 4086 |
| Gene Symbol | SMAD1 |
| Species | Human |
| Reactivity Notes | A BLAST analysis was used to suggest 100% cross reactivity with Smad1 from human, Duckbill platypus, Drosophila, mouse, opossum, chimpanzee, bonobo, orangutan, gorilla, macaque, cattle, sheep, pig, rat, horse, salmon, chicken, and dog based on the sequence homology with the immunogen. Reactivity against homologues from other sources is not known. |
| Specificity/Sensitivity | This affinity-purified antibody is directed against the phosphorylated form of human Smad1 protein at the pS206 residue. The resultant affinity purified antibody was then cross adsorbed against the non-phosphorylated form of the immunizing peptide. Reactivity occurs against human Smad1 pS206 protein and the antibody is specific for the phosphorylated form of the protein. Reactivity with non-phosphorylated human Smad1 is minimal by ELISA and western blot. A BLAST analysis was used to suggest 100% cross reactivity with Smad1 from human, Duckbill platypus, Drosophila, mouse, opossum, chimpanzee, bonobo, orangutan, gorilla, macaque, cattle, sheep, pig, rat, horse, salmon, chicken, and dog based on the sequence homology with the immunogen. Reactivity against homologues from other sources is not known. |
| Immunogen | This affinity purified Smad1 [p Ser206] Antibody was prepared from whole rabbit serum produced by repeated immunizations with a phosphorylated synthetic peptide corresponding to the region of amino acids containing serine 206 of human Smad1 protein. (Uniprot: Q15797) |

Product Application Details

| | |
|------------------------------|---|
| Applications | Western Blot, ELISA |
| Recommended Dilutions | Western Blot 1:500-1:2000, ELISA 1:5000-1:25000 |
| Application Notes | This affinity purified antibody has been tested for use in ELISA and by western blot. Specific conditions for reactivity should be optimized by the end user. Expect a band approximately 52 kDa in size corresponding to phosphorylated SMAD1 protein by western blotting in the appropriate stimulated tissue or cell lysate or extract. This antibody is specific for the phosphorylated pS206 of SMAD1. Stimulation of EGF, TGFbeta BMP2, and 0.5M NaCl are recommended for 1 hour. |

Images

Western Blot: Smad1 [p Ser206] Antibody [NBP1-77858] - Shows detection of endogenous phosphorylated SMAD1 in whole cell lysates from human hepatoma (HEPG2, lanes 1-4) derived cell lines treated with PBS, BMP2 (5 ug/ml), EGF and reacted for 1 hour at room temperature. Primary antibody was pre-incubated before reaction with blot as follows: top row - with PBS, middle row - with the immunizing phosphorylated peptide and bottom row - with control or non-phosphorylated peptide. The membrane was washed and reacted with a 1:3,000 dilution HRP-conjugated a-Rabbit IgG for 1 hour at room temperature. Detection was by ECL. Personal communication, Xin-Hua Feng, Baylor College of Medicine, Houston, TX.





Novus Biologicals USA

10730 E. Briarwood Avenue
Centennial, CO 80112
USA
Phone: 303.730.1950
Toll Free: 1.888.506.6887
Fax: 303.730.1966
nb-customerservice@bio-techne.com

Bio-Techne Canada

21 Canmotor Ave
Toronto, ON M8Z 4E6
Canada
Phone: 905.827.6400
Toll Free: 855.668.8722
Fax: 905.827.6402
canada.inquires@bio-techne.com

Bio-Techne Ltd

19 Barton Lane
Abingdon Science Park
Abingdon, OX14 3NB, United Kingdom
Phone: (44) (0) 1235 529449
Free Phone: 0800 37 34 15
Fax: (44) (0) 1235 533420
info.EMEA@bio-techne.com

General Contact Information

www.novusbio.com
Technical Support: nb-technical@bio-techne.com
Orders: nb-customerservice@bio-techne.com
General: novus@novusbio.com

Products Related to NBP1-77858

| | |
|--------------------|---|
| HAF008 | Goat anti-Rabbit IgG Secondary Antibody [HRP] |
| NB7160 | Goat anti-Rabbit IgG (H+L) Secondary Antibody [HRP] |
| NBP2-24891 | Rabbit IgG Isotype Control |
| H00004086-P01-10ug | Recombinant Human Smad1 GST (N-Term) Protein |

Limitations

This product is for research use only and is not approved for use in humans or in clinical diagnosis. Primary Antibodies are guaranteed for 1 year from date of receipt.

For more information on our 100% guarantee, please visit www.novusbio.com/guarantee

Earn gift cards/discounts by submitting a review: www.novusbio.com/reviews/submit/NBP1-77858

Earn gift cards/discounts by submitting a publication using this product:
www.novusbio.com/publications

