

Product Datasheet

LDB1 Antibody - BSA Free NBP1-77832

Unit Size: 0.1 mg

Store at -20C short term. Aliquot and store at -80C long term. Avoid freeze-thaw cycles.

www.novusbio.com



technical@novusbio.com

Publications: 2

Protocols, Publications, Related Products, Reviews, Research Tools and Images at:
www.novusbio.com/NBP1-77832

Updated 2/21/2025 v.20.1

Earn rewards for product
reviews and publications.

Submit a publication at www.novusbio.com/publications

Submit a review at www.novusbio.com/reviews/destination/NBP1-77832



NBP1-77832

LDB1 Antibody - BSA Free

Product Information	
Unit Size	0.1 mg
Concentration	Please see the vial label for concentration. If unlisted please contact technical services.
Storage	Store at -20C short term. Aliquot and store at -80C long term. Avoid freeze-thaw cycles.
Clonality	Polyclonal
Preservative	0.01% Sodium Azide
Isotype	IgG
Purity	Immunogen affinity purified
Buffer	0.02 M Potassium Phosphate, 0.15 M Sodium Chloride, pH 7.2

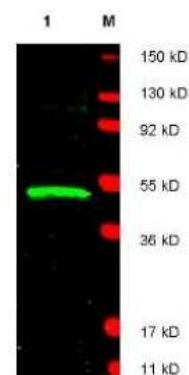
Product Description	
Description	<p>This affinity purified antibody is directed against the mouse LDB1 protein. The product was affinity purified from monospecific antiserum by immunoaffinity purification</p> <p>Store vial at -20C prior to opening. Aliquot contents and freeze at -20C or below for extended storage. Avoid cycles of freezing and thawing. Centrifuge product if not completely clear after standing at room temperature. This product is stable for several weeks at 4C as an undiluted liquid. Dilute only prior to immediate use.</p>
Host	Rabbit
Gene ID	8861
Gene Symbol	LDB1
Species	Human, Mouse
Reactivity Notes	A BLAST analysis was used to suggest reactivity with this protein from mouse, human, chimpanzee, dog, frog, chicken and rat based on 100% homology for the immunogen sequence. Cross reactivity with LDB1 homologues from other sources has not been determined.
Immunogen	This affinity purified LDB1 Antibody was prepared from whole rabbit serum produced by repeated immunizations with a synthetic peptide corresponding to a C-Terminal region of mouse LDB1 protein. (Uniprot: P70662)

Product Application Details	
Applications	Western Blot, ELISA, Chromatin Immunoprecipitation (ChIP)
Recommended Dilutions	Western Blot 1:500-1:3000, ELISA 1:425000, Chromatin Immunoprecipitation (ChIP) 1:10-1:500
Application Notes	This affinity purified antibody has been tested for use in ELISA, western blot and CHIP. Specific conditions for reactivity should be optimized by the end user. Expect a band approximately 43 kDa in size corresponding to LDB1 by western blotting in the appropriate cell lysate or extract. This antibody has been used in a ChIP assay using murine erythroleukemia (MEL) cells. The test sequence was the upstream enhancer of the GATA-1 gene; a putative LDB1 binding region as suggested by Orkin et al. Anti-LDB1 was used successfully in ChIP assays to precipitate a roughly 4-fold enrichment at the GATA1-HS1 enhancer element in DMSO-induced murine erythroleukemia cells. We suggest using 20ug for 10E8 cells for ChIP.



Images

Western Blot: LDB1 Antibody [NBP1-77832] - This antibody was used at a 1:1,800 dilution in 5% BLOTTO in PBS reacted overnight at 4C. The membrane was washed and reacted with a 1:20,000 dilution of DyLight800 conjugated Gt-a-Rabbit IgG [H&L] MX for 45 min at room temperature (800 nm channel, green). Molecular weight estimation was made by comparison to prestained MW markers in lane M (700 nm channel, red).



Publications

Hsu Y, Pintacuda G, Liu R et al. Using brain cell-type-specific protein interactomes to interpret neurodevelopmental genetic signals in schizophrenia iScience 2023-04-01 [PMID: 37207277] (WB, Human)

Pintacuda G, Hsu Y, Tsafou K et al. Protein interaction studies in human induced neurons indicate convergent biology underlying autism spectrum disorders Cell Genomics 2023-01-01 [PMID: 36950384]



Novus Biologicals USA

10730 E. Briarwood Avenue
Centennial, CO 80112
USA
Phone: 303.730.1950
Toll Free: 1.888.506.6887
Fax: 303.730.1966
nb-customerservice@bio-techne.com

Bio-Techne Canada

21 Canmotor Ave
Toronto, ON M8Z 4E6
Canada
Phone: 905.827.6400
Toll Free: 855.668.8722
Fax: 905.827.6402
canada.inquires@bio-techne.com

Bio-Techne Ltd

19 Barton Lane
Abingdon Science Park
Abingdon, OX14 3NB, United Kingdom
Phone: (44) (0) 1235 529449
Free Phone: 0800 37 34 15
Fax: (44) (0) 1235 533420
info.EMEA@bio-techne.com

General Contact Information

www.novusbio.com
Technical Support: nb-technical@bio-techne.com
Orders: nb-customerservice@bio-techne.com
General: novus@novusbio.com

Products Related to NBP1-77832

HAF008	Goat anti-Rabbit IgG Secondary Antibody [HRP]
NB7160	Goat anti-Rabbit IgG (H+L) Secondary Antibody [HRP]
NBP2-24891	Rabbit IgG Isotype Control
NBP1-85573PEP	LDB1 Recombinant Protein Antigen

Limitations

This product is for research use only and is not approved for use in humans or in clinical diagnosis. Primary Antibodies are guaranteed for 1 year from date of receipt.

For more information on our 100% guarantee, please visit www.novusbio.com/guarantee

Earn gift cards/discounts by submitting a review: www.novusbio.com/reviews/submit/NBP1-77832

Earn gift cards/discounts by submitting a publication using this product:
www.novusbio.com/publications

