

# Product Datasheet

## Mer2 [p Ser30] Antibody - BSA Free NBP1-77754

Unit Size: 0.1 mg

Store at -20C short term. Aliquot and store at -80C long term. Avoid freeze-thaw cycles.

[www.novusbio.com](http://www.novusbio.com)



[technical@novusbio.com](mailto:technical@novusbio.com)

Protocols, Publications, Related Products, Reviews, Research Tools and Images at:  
[www.novusbio.com/NBP1-77754](http://www.novusbio.com/NBP1-77754)

Updated 2/21/2025 v.20.1

Earn rewards for product  
reviews and publications.

Submit a publication at [www.novusbio.com/publications](http://www.novusbio.com/publications)

Submit a review at [www.novusbio.com/reviews/destination/NBP1-77754](http://www.novusbio.com/reviews/destination/NBP1-77754)



**NBP1-77754**

Mer2 [p Ser30] Antibody - BSA Free

Product Information	
Unit Size	0.1 mg
Concentration	Please see the vial label for concentration. If unlisted please contact technical services.
Storage	Store at -20C short term. Aliquot and store at -80C long term. Avoid freeze-thaw cycles.
Clonality	Polyclonal
Preservative	0.01% Sodium Azide
Isotype	IgG
Purity	Immunogen affinity purified
Buffer	0.02 M Potassium Phosphate, 0.15 M Sodium Chloride, pH 7.2

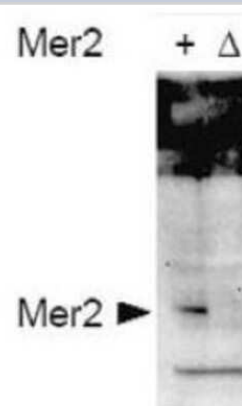
Product Description	
Description	<p>This affinity-purified antibody is directed against the phosphorylated form of <i>Saccharomyces cerevisiae</i> Mer2 protein at the pS30 residue. The product was affinity purified from monospecific antiserum by immunoaffinity purification. Antiserum was first purified against the phosphorylated form of the immunizing peptide. The resultant affinity purified antibody was then cross-adsorbed against the non-phosphorylated peptide to remove any unwanted reactivities.</p> <p>Store vial at -20C prior to opening. Aliquot contents and freeze at -20C or below for extended storage. Avoid cycles of freezing and thawing. Centrifuge product if not completely clear after standing at room temperature. This product is stable for several weeks at 4C as an undiluted liquid. Dilute only prior to immediate use.</p>
Host	Rabbit
Gene ID	853478
Gene Symbol	REC107
Species	Yeast
Specificity/Sensitivity	This affinity-purified antibody is directed against the phosphorylated form of <i>Saccharomyces cerevisiae</i> Mer2 protein at the pS30 residue. The resultant affinity purified antibody was then cross-adsorbed against the non-phosphorylated peptide to remove any unwanted reactivities.
Immunogen	This affinity purified Mer2 [p Ser30] Antibody was prepared from whole rabbit serum produced by repeated immunizations with a synthetic peptide corresponding to amino acids 26-35 of <i>Saccharomyces cerevisiae</i> Mer2 protein. (Uniprot: P21651)

Product Application Details	
Applications	Western Blot, ELISA, Immunoprecipitation
Recommended Dilutions	Western Blot 1:1000-1:10000, ELISA 1:5000-1:25000, Immunoprecipitation 1:100
Application Notes	This affinity purified antibody has been tested for use in ELISA and by western blot. Specific conditions for reactivity should be optimized by the end user. Expect a band approximately 50 kDa in size corresponding to phosphorylated Mer2 protein by western blotting in the appropriate cell lysate or extract. Less than 2% reactivity is observed against the non-phosphorylated form of the immunizing peptide. This antibody is phospho specific for Mer2 phosphorylated at the pS30 residue. Preparation of extracts from cells 4hr after initiation of meiosis is suggested.



## Images

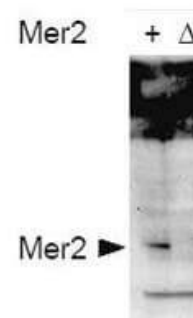
Western Blot: Mer2 [p Ser30] Antibody [NBP1-77754] - Detection of phosphorylated Mer2 in whole cell extracts. Cells were either wild type (+) or contained mer2 deletions (D). Extracts were prepared from cells 4hr after initiation of meiosis. Proteins were obtained using TCA precipitation. The primary antibody was used at a 1:7,500 dilution. Secondary antibody was used at 1:5,000 dilution.



Western Blot: Mer2 [p Ser30] Antibody [NBP1-77754] - Detection of phosphorylated Mer2 but not phosphatase treated or mutant cells. Lane 1 contains Mer2-myc protein detected in wild type cells after first immunoprecipitating the protein using anti-myc antibody. Cells were harvested 4 h after the initiation of meiosis and therefore contain mostly phosphorylated Mer2. Lane 2 contains the same preparation after treatment with phosphatase. Lane 3 contains Mer2-S30A protein as a phosphorylation control. This antibody appears to be specific for phosphorylated Mer2 at the S30 position with negligible cross reactivity against unphosphorylated protein. The primary antibody was used at a 1:5,000 dilution.



Western blot using affinity purified anti-S.cerevisiae Mer2 pS30 antibody shows detection of phosphorylated Mer2 in whole cell extracts. Cells were either wild type (+) or contained mer2 deletions (D). Extracts were prepared from cells 4hr after initiation of meiosis. Proteins were obtained using TCA precipitation. The primary antibody was used at a 1:7,500 dilution. Secondary antibody was used at 1:5,000 dilution. Personal Communication. Michael Lichten, NIH, CCR, Bethesda, MD.



Western blot using affinity purified anti-S.cerevisiae Mer2 pS30 antibody shows detection of phosphorylated Mer2 but not phosphatase treated or mutant cells. Lane 1 contains Mer2-myc protein detected in wild type cells after first immunoprecipitating the protein using anti-myc antibody. Cells were harvested 4 h after the initiation of meiosis and therefore contain mostly phosphorylated Mer2. Lane 2 contains the same preparation after treatment with phosphatase. Lane 3 contains Mer2-S30A protein as a phosphorylation control. This antibody appears to be specific for phosphorylated Mer2 at the S30 position with negligible cross reactivity against unphosphorylated protein. The primary antibody was used at a 1:5,000 dilution. Personal Communication. Michael Lichten, NIH, CCR, Bethesda, MD.





### **Novus Biologicals USA**

10730 E. Briarwood Avenue  
Centennial, CO 80112  
USA  
Phone: 303.730.1950  
Toll Free: 1.888.506.6887  
Fax: 303.730.1966  
nb-customerservice@bio-techne.com

### **Bio-Techne Canada**

21 Canmotor Ave  
Toronto, ON M8Z 4E6  
Canada  
Phone: 905.827.6400  
Toll Free: 855.668.8722  
Fax: 905.827.6402  
canada.inquires@bio-techne.com

### **Bio-Techne Ltd**

19 Barton Lane  
Abingdon Science Park  
Abingdon, OX14 3NB, United Kingdom  
Phone: (44) (0) 1235 529449  
Free Phone: 0800 37 34 15  
Fax: (44) (0) 1235 533420  
info.EMEA@bio-techne.com

### **General Contact Information**

www.novusbio.com  
Technical Support: nb-technical@bio-  
techne.com  
Orders: nb-customerservice@bio-techne.com  
General: novus@novusbio.com

### **Products Related to NBP1-77754**

---

HAF008	Goat anti-Rabbit IgG Secondary Antibody [HRP]
NB7160	Goat anti-Rabbit IgG (H+L) Secondary Antibody [HRP]
NBP2-24891	Rabbit IgG Isotype Control

---

### **Limitations**

This product is for research use only and is not approved for use in humans or in clinical diagnosis. Primary Antibodies are guaranteed for 1 year from date of receipt.

For more information on our 100% guarantee, please visit [www.novusbio.com/guarantee](http://www.novusbio.com/guarantee)

Earn gift cards/discounts by submitting a review: [www.novusbio.com/reviews/submit/NBP1-77754](http://www.novusbio.com/reviews/submit/NBP1-77754)

Earn gift cards/discounts by submitting a publication using this product:  
[www.novusbio.com/publications](http://www.novusbio.com/publications)

