

Product Datasheet

CCL20/MIP-3 alpha Antibody [Biotin] NBP1-77718

Unit Size: 0.1 mg

Store lyophilized antibody at 4C in the dark. Aliquot reconstituted liquid and store at -20C. Avoid freeze-thaw cycles.

www.novusbio.com



technical@novusbio.com

Protocols, Publications, Related Products, Reviews, Research Tools and Images at:
www.novusbio.com/NBP1-77718

Updated 10/15/2020 v.20.1

Earn rewards for product
reviews and publications.

Submit a publication at www.novusbio.com/publications

Submit a review at www.novusbio.com/reviews/destination/NBP1-77718



NBP1-77718**CCL20/MIP-3 alpha Antibody [Biotin]**

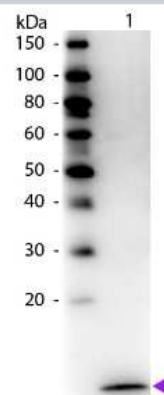
Product Information	
Unit Size	0.1 mg
Concentration	LYOPH mg/ml
Storage	Store lyophilized antibody at 4C in the dark. Aliquot reconstituted liquid and store at -20C. Avoid freeze-thaw cycles.
Clonality	Polyclonal
Preservative	0.01% Sodium Azide
Reconstitution Instructions	Reconstitute with 100 ul deionized water.
Isotype	IgG
Conjugate	Biotin
Purity	IgG purified
Buffer	Lyophilized from 0.02 M Potassium Phosphate, 0.15 M Sodium Chloride, pH 7.2, 10 mg/mL Bovine Serum Albumin (BSA) - Immunoglobulin and Protease free

Product Description	
Description	CCL20/MIP-3 alpha Antibody [Biotin] was heated to 56C for 30 minutes.
Host	Rabbit
Gene ID	6364
Gene Symbol	CCL20
Species	Human
Specificity/Sensitivity	In ELISA and other immunoreactive assays, this antibody will recognize both native and recombinant human MIP-3a in cell supernatants and certain body fluids. A control of similarly diluted normal rabbit IgG is recommended.
Immunogen	This purified antibody was prepared from whole rabbit serum produced by repeated immunizations with full length recombinant human MIP-3 alpha protein.

Product Application Details	
Applications	Western Blot, ELISA, Immunohistochemistry, Immunohistochemistry-Paraffin
Recommended Dilutions	Western Blot 1:2000-1:10000, ELISA 1:20000-1:100000, Immunohistochemistry 1:1000-1:5000, Immunohistochemistry-Paraffin 1:1000-1:5000
Application Notes	By western blot a band approximately 11 kDa in size corresponding - human MIP-3alpha protein is expected in the appropriate cell lysate or extract.

Images

Western Blot: CCL20/MIP-3 alpha Antibody [Biotin] [NBP1-77718] - Lane 1: Human MIP-3a. Lane 2: None. Load: 50 ng per lane. Used at a dilution of 1:1000 for 60 min at RT.





Novus Biologicals USA

10730 E. Briarwood Avenue
Centennial, CO 80112
USA
Phone: 303.730.1950
Toll Free: 1.888.506.6887
Fax: 303.730.1966
nb-customerservice@bio-techne.com

Bio-Techne Canada

21 Canmotor Ave
Toronto, ON M8Z 4E6
Canada
Phone: 905.827.6400
Toll Free: 855.668.8722
Fax: 905.827.6402
canada.inquires@bio-techne.com

Bio-Techne Ltd

19 Barton Lane
Abingdon Science Park
Abingdon, OX14 3NB, United Kingdom
Phone: (44) (0) 1235 529449
Free Phone: 0800 37 34 15
Fax: (44) (0) 1235 533420
info.EMEA@bio-techne.com

General Contact Information

www.novusbio.com
Technical Support: nb-technical@bio-techne.com
Orders: nb-customerservice@bio-techne.com
General: novus@novusbio.com

Limitations

This product is for research use only and is not approved for use in humans or in clinical diagnosis. Primary Antibodies are guaranteed for 1 year from date of receipt.

For more information on our 100% guarantee, please visit www.novusbio.com/guarantee

Earn gift cards/discounts by submitting a review: www.novusbio.com/reviews/submit/NBP1-77718

Earn gift cards/discounts by submitting a publication using this product:
www.novusbio.com/publications

