

Product Datasheet

CARD10 Antibody - BSA Free

NBP1-76676

Unit Size: 0.1 mg

Store at 4C short term. Aliquot and store at -20C long term. Avoid freeze-thaw cycles.

www.novusbio.com



technical@novusbio.com

Publications: 1

Protocols, Publications, Related Products, Reviews, Research Tools and Images at:
www.novusbio.com/NBP1-76676

Updated 10/23/2024 v.20.1

Earn rewards for product
reviews and publications.

Submit a publication at www.novusbio.com/publications

Submit a review at www.novusbio.com/reviews/destination/NBP1-76676



NBP1-76676

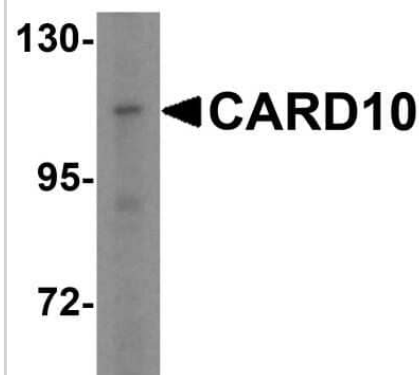
CARD10 Antibody - BSA Free

Product Information	
Unit Size	0.1 mg
Concentration	1 mg/ml
Storage	Store at 4C short term. Aliquot and store at -20C long term. Avoid freeze-thaw cycles.
Clonality	Polyclonal
Preservative	0.02% Sodium Azide
Isotype	IgG
Purity	Immunogen affinity purified
Buffer	PBS
Target Molecular Weight	115 kDa
Product Description	
Host	Rabbit
Gene ID	29775
Gene Symbol	CARD10
Species	Human, Mouse
Immunogen	Antibody was raised against a synthetic peptide corresponding to 14 amino acids at the C-terminus of human CARD10. The immunogen is located within the last 50 amino acids of CARD10. Amino Acid Sequence: KECGSSRGCPSSSED
Product Application Details	
Applications	Western Blot, ELISA, Immunocytochemistry/ Immunofluorescence
Recommended Dilutions	Western Blot 5 ug/ml, ELISA 1:100-1:2000, Immunocytochemistry/ Immunofluorescence 10-20 ug/ml

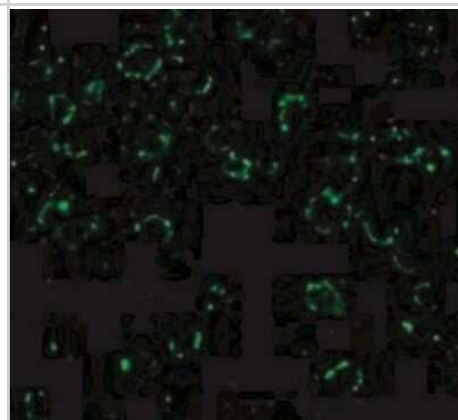


Images

Western Blot: CARD10 Antibody [NBP1-76676] - Analysis of CARD10 in A-20 cell lysate with CARD10 antibody at 5 ug/mL.



Immunocytochemistry/Immunofluorescence: CARD10 Antibody [NBP1-76676] - Immunofluorescence of CARD10 in EL4 cells with CARD10 antibody at 20 ug/mL.



Immunocytochemistry/Immunofluorescence: CARD10 Antibody [NBP1-76676] - Immunocytochemistry of CARD10 in EL4 cells using NBP1-76676 at 10 ug/mL.



Publications

Martin D, Galisteo R, Gutkind JS. CXCL8/IL8 stimulates vascular endothelial growth factor (VEGF) expression and the autocrine activation of VEGFR2 in endothelial cells by activating NFkappaB through the CBM (Carma3/Bcl10/Malt1) complex. J Biol Chem. 2009-03-06 [PMID: 19112107] (WB, Mouse)

Details:

WB (mouse SV40-immortalized endothelial cells), Fig. 4A,F.



Novus Biologicals USA

10730 E. Briarwood Avenue
Centennial, CO 80112
USA
Phone: 303.730.1950
Toll Free: 1.888.506.6887
Fax: 303.730.1966
nb-customerservice@bio-techne.com

Bio-Techne Canada

21 Canmotor Ave
Toronto, ON M8Z 4E6
Canada
Phone: 905.827.6400
Toll Free: 855.668.8722
Fax: 905.827.6402
canada.inquires@bio-techne.com

Bio-Techne Ltd

19 Barton Lane
Abingdon Science Park
Abingdon, OX14 3NB, United Kingdom
Phone: (44) (0) 1235 529449
Free Phone: 0800 37 34 15
Fax: (44) (0) 1235 533420
info.EMEA@bio-techne.com

General Contact Information

www.novusbio.com
Technical Support: nb-technical@bio-techne.com
Orders: nb-customerservice@bio-techne.com
General: novus@novusbio.com

Products Related to NBP1-76676

NBP1-76676PEP	CARD10 Antibody Blocking Peptide
HAF008	Goat anti-Rabbit IgG Secondary Antibody [HRP]
NB7160	Goat anti-Rabbit IgG (H+L) Secondary Antibody [HRP]
NBP2-24891	Rabbit IgG Isotype Control

Limitations

This product is for research use only and is not approved for use in humans or in clinical diagnosis. Primary Antibodies are guaranteed for 1 year from date of receipt.

For more information on our 100% guarantee, please visit www.novusbio.com/guarantee

Earn gift cards/discounts by submitting a review: www.novusbio.com/reviews/submit/NBP1-76676

Earn gift cards/discounts by submitting a publication using this product:
www.novusbio.com/publications

