

Product Datasheet

Lgi1 Antibody Blocking Peptide

NBP1-76379PEP

Unit Size: 0.05 mg

Store at -20C. Avoid freeze-thaw cycles.

www.novusbio.com



technical@novusbio.com

Protocols, Publications, Related Products, Reviews, Research Tools and Images at:
www.novusbio.com/NBP1-76379PEP

Updated 10/23/2024 v.20.1

Earn rewards for product
reviews and publications.

Submit a publication at www.novusbio.com/publications

Submit a review at www.novusbio.com/reviews/destination/NBP1-76379PEP



NBP1-76379PEP**Lgi1 Antibody Blocking Peptide**

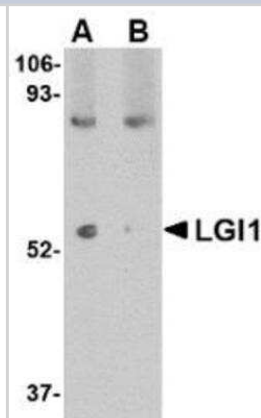
Product Information	
Unit Size	0.05 mg
Concentration	0.2 mg/ml
Storage	Store at -20C. Avoid freeze-thaw cycles.
Preservative	0.02% Sodium Azide
Purity	N/A
Buffer	PBS pH 7.2 (10 mM NaH ₂ PO ₄ , 10 mM Na ₂ HPO ₄ , 130 mM NaCl) containing 0.1% bovine serum albumin.

Product Description	
Description	<p>A blocking peptide containing 13 amino acids near the amino terminus of human LGI1.</p> <p>Source: <i>Synthetic</i></p> <p>(Accession #: AAQ89244)</p>
Gene ID	9211
Gene Symbol	LGI1
Species	Human

Product Application Details	
Applications	Antibody Competition
Recommended Dilutions	Antibody Competition
Application Notes	This peptide is useful as a blocking peptide for NBP1-76379. For further blocking peptide related protocol, click here .

Images

Western Blot: Lgi1 Peptide [NBP1-76379PEP] - blocks the antibody activity completely in Western blot by incubating the peptide with equal volume of antibody for 30 min at 37C.





Novus Biologicals USA

10730 E. Briarwood Avenue
Centennial, CO 80112
USA
Phone: 303.730.1950
Toll Free: 1.888.506.6887
Fax: 303.730.1966
nb-customerservice@bio-techne.com

Bio-Techne Canada

21 Canmotor Ave
Toronto, ON M8Z 4E6
Canada
Phone: 905.827.6400
Toll Free: 855.668.8722
Fax: 905.827.6402
canada.inquires@bio-techne.com

Bio-Techne Ltd

19 Barton Lane
Abingdon Science Park
Abingdon, OX14 3NB, United Kingdom
Phone: (44) (0) 1235 529449
Free Phone: 0800 37 34 15
Fax: (44) (0) 1235 533420
info.EMEA@bio-techne.com

General Contact Information

www.novusbio.com
Technical Support: nb-technical@bio-techne.com
Orders: nb-customerservice@bio-techne.com
General: novus@novusbio.com

Products Related to NBP1-76379PEP

NBP1-77320PEP	Lgi1 Antibody Blocking Peptide
NBP2-22203	ERK1 Antibody (1E5) - BSA Free
NBP2-42190	Lgi1 Antibody (S283-7)
MAB1455	Albumin Antibody (188835) [Unconjugated] - Serum

Limitations

This product is for research use only and is not approved for use in humans or in clinical diagnosis. Peptides and proteins are guaranteed for 3 months from date of receipt.

For more information on our 100% guarantee, please visit www.novusbio.com/guarantee

Earn gift cards/discounts by submitting a review: www.novusbio.com/reviews/submit/NBP1-76379PEP

Earn gift cards/discounts by submitting a publication using this product:
www.novusbio.com/publications

