

Product Datasheet

Rabbit anti-Mouse IgM Heavy Chain Secondary Antibody [Texas Red] NBP1-73703

Unit Size: 1.5 mg

Store lyophilized antibody at 4C in the dark. Aliquot reconstituted liquid and store at -20C. Avoid freeze-thaw cycles.

www.novusbio.com



technical@novusbio.com

Protocols, Publications, Related Products, Reviews, Research Tools and Images at:
www.novusbio.com/NBP1-73703

Updated 7/28/2024 v.20.1

**Earn rewards for product
reviews and publications.**

Submit a publication at www.novusbio.com/publications

Submit a review at www.novusbio.com/reviews/destination/NBP1-73703



NBP1-73703

Rabbit anti-Mouse IgM Heavy Chain Secondary Antibody [Texas Red]

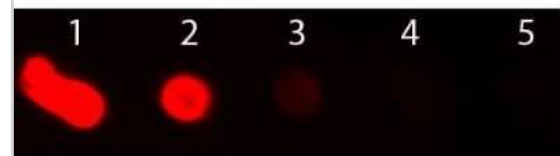
Product Information	
Unit Size	1.5 mg
Concentration	LYOPH mg/ml
Storage	Store lyophilized antibody at 4C in the dark. Aliquot reconstituted liquid and store at -20C. Avoid freeze-thaw cycles.
Clonality	Polyclonal
Preservative	0.01% Sodium Azide
Reconstitution Instructions	Reconstitute with 1.0 ml deionized water
Isotype	IgG
Conjugate	Texas Red
Purity	Immunogen affinity purified
Buffer	Lyophilized from 0.02 M Potassium Phosphate, 0.15 M Sodium Chloride, pH 7.2, 10 mg/mL Bovine Serum Albumin (BSA) - Immunoglobulin and Protease free

Product Description	
Host	Rabbit
Gene ID	3507
Species	Mouse
Specificity/Sensitivity	No reaction was observed against other mouse heavy or light chain proteins.
Immunogen	Mouse IgM whole molecule

Product Application Details	
Applications	Dot Blot, Fluorophore-linked immunosorbent assay, Flow Cytometry, Immunocytochemistry/ Immunofluorescence
Recommended Dilutions	Flow Cytometry 1:500 - 1:2500, Immunocytochemistry/ Immunofluorescence 1:1000 - 1:5000, Dot Blot, Fluorophore-linked immunosorbent assay 1:10000 - 1:50000
Application Notes	This product is designed for ICC/IF, FLISA and fluorescent western blotting. This product is also suitable for multiplex analysis, including multicolor imaging, utilizing various commercial platforms.

Images

Dot Blot: Rabbit anti-Mouse IgM Secondary Antibody [Texas Red] [NBP1-73703] - Dot Blot of Rabbit anti-Mouse IgM Secondary Antibody [Texas Red]. Antigen: Mouse IgM. Load: Lane 1 - 200 ng Lane 2 - 66.7 ng Lane 3 - 22.2 ng Lane 4 - 7.41 ng Lane 5 - 2.47 ng. Incubated for 1hr at RT; blocked for 60 min at RT.





Novus Biologicals USA

10730 E. Briarwood Avenue
Centennial, CO 80112
USA
Phone: 303.730.1950
Toll Free: 1.888.506.6887
Fax: 303.730.1966
nb-customerservice@bio-techne.com

Bio-Techne Canada

21 Canmotor Ave
Toronto, ON M8Z 4E6
Canada
Phone: 905.827.6400
Toll Free: 855.668.8722
Fax: 905.827.6402
canada.inquires@bio-techne.com

Bio-Techne Ltd

19 Barton Lane
Abingdon Science Park
Abingdon, OX14 3NB, United Kingdom
Phone: (44) (0) 1235 529449
Free Phone: 0800 37 34 15
Fax: (44) (0) 1235 533420
info.EMEA@bio-techne.com

General Contact Information

www.novusbio.com
Technical Support: nb-technical@bio-
techne.com
Orders: nb-customerservice@bio-techne.com
General: novus@novusbio.com

Limitations

This product is for research use only and is not approved for use in humans or in clinical diagnosis. Secondary Antibodies are guaranteed for 1 year from date of receipt.

For more information on our 100% guarantee, please visit www.novusbio.com/guarantee

Earn gift cards/discounts by submitting a review: www.novusbio.com/reviews/submit/NBP1-73703

Earn gift cards/discounts by submitting a publication using this product:
www.novusbio.com/publications

