

# Product Datasheet

## Rabbit anti-Mouse IgG2a Heavy Chain Secondary Antibody [FITC] NBP1-73637

Unit Size: 1 mg

Store lyophilized antibody at 4C in the dark. Aliquot reconstituted liquid and store at -20C. Avoid freeze-thaw cycles.

[www.novusbio.com](http://www.novusbio.com)



[technical@novusbio.com](mailto:technical@novusbio.com)

Protocols, Publications, Related Products, Reviews, Research Tools and Images at:  
[www.novusbio.com/NBP1-73637](http://www.novusbio.com/NBP1-73637)

Updated 10/23/2024 v.20.1

Earn rewards for product  
reviews and publications.

Submit a publication at [www.novusbio.com/publications](http://www.novusbio.com/publications)

Submit a review at [www.novusbio.com/reviews/destination/NBP1-73637](http://www.novusbio.com/reviews/destination/NBP1-73637)



**NBP1-73637****Rabbit anti-Mouse IgG2a Heavy Chain Secondary Antibody [FITC]**

<b>Product Information</b>	
<b>Unit Size</b>	1 mg
<b>Concentration</b>	LYOPH mg/ml
<b>Storage</b>	Store lyophilized antibody at 4C in the dark. Aliquot reconstituted liquid and store at -20C. Avoid freeze-thaw cycles.
<b>Clonality</b>	Polyclonal
<b>Preservative</b>	0.01% Sodium Azide
<b>Reconstitution Instructions</b>	Reconstitute with 1.0 ml deionized water (or equivalent).
<b>Isotype</b>	IgG
<b>Conjugate</b>	FITC
<b>Purity</b>	Multi-step
<b>Buffer</b>	Lyophilized from 0.02 M Potassium Phosphate, 0.15 M Sodium Chloride, pH 7.2, 10 mg/mL Bovine Serum Albumin (BSA) - Immunoglobulin and Protease free

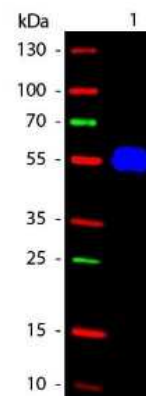
<b>Product Description</b>	
<b>Description</b>	<p>Store vial at 4C prior to restoration. For extended storage aliquot contents and freeze at -20C or below. Avoid cycles of freezing and thawing. Centrifuge product if not completely clear after standing at room temperature. This product is stable for several weeks at 4C as an undiluted liquid. Dilute only prior to immediate use.</p> <p>This product was prepared from monospecific antiserum by immunoaffinity chromatography using Mouse IgG2a coupled to agarose beads followed by solid phase adsorption(s) against a panel of immobilized mouse and human serum proteins resulting in a conjugated antibody designed for flow cytometry</p>
<b>Host</b>	Rabbit
<b>Species</b>	Mouse
<b>Specificity/Sensitivity</b>	Specificity was confirmed by ELISA.
<b>Immunogen</b>	Mouse IgG2a heavy chain

<b>Product Application Details</b>	
<b>Applications</b>	Western Blot, Dot Blot, Fluorophore-linked immunosorbent assay, Flow Cytometry, Immunocytochemistry/ Immunofluorescence
<b>Recommended Dilutions</b>	Western Blot, Flow Cytometry 1:500 - 1:2500, Immunocytochemistry/ Immunofluorescence 1:1000 - 1:5000, Dot Blot, Fluorophore-linked immunosorbent assay 1:10000 - 1:50000
<b>Application Notes</b>	This product has been tested by dot blot and western blot and is designed for immunofluorescence microscopy, fluorescence based plate assays (FLISA) and fluorescent western blotting. This product is also suitable for multiplex analysis, including multicolor imaging, utilizing various commercial platforms.



## Images

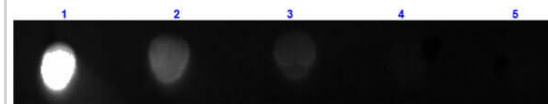
Western Blot: Rabbit anti-Mouse IgG2a Heavy Chain Secondary Antibody [FITC] [NBP1-73637] - Western blot of Rabbit anti-Mouse IgG2a Heavy Chain Secondary antibody [FITC]. Lane 1: Mouse IgG2a. Lane 2: None. Load: 50 ng per lane. Primary antibody: None. Secondary antibody: Rabbit anti-Mouse IgG2a Heavy Chain Secondary antibody [FITC] at 1:1,000 for 60 min at RT. Blocking buffer for 30 min at RT. Predicted/Observed size: 55 kDa, 55 kDa for Mouse IgG2a (Gamma 2a chain). Other band(s): None.



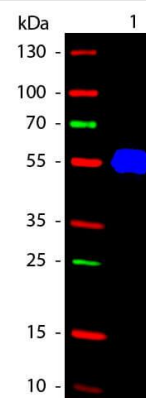
Dot Blot: Rabbit anti-Mouse IgG2a Heavy Chain Secondary Antibody [FITC] [NBP1-73637]



Dot Blot results of Rabbit anti-Mouse IgG2a Heavy Chain Secondary Antibody [FITC]. Dots are Mouse IgG2a at (1) 100ng, (2) 33.3ng, (3) 11.1ng, (4) 3.70ng, (5) 1.23ng. blocking for 30 min at RT. Primary Antibody: Rabbit Anti-Mouse IgG2a FITC at 1ug/mL for 1hr at RT. Secondary Antibody: none. Imaged with BioRad ChemiDoc, FITC filter.



Western blot of Fluorescein conjugated Rabbit Anti-Mouse IgG2a (Gamma 2a chain) secondary antibody. Lane 1: Mouse IgG2a. Lane 2: None. Load: 50 ng per lane. Primary antibody: None. Secondary antibody: Fluorescein rabbit secondary antibody at 1:1,000 for 60 min at RT. Blocking: for 30 min at RT. Predicted/Observed size: 55 kDa, 55 kDa for Mouse IgG2a (Gamma 2a chain). Other band(s): None.





### **Novus Biologicals USA**

10730 E. Briarwood Avenue  
Centennial, CO 80112  
USA  
Phone: 303.730.1950  
Toll Free: 1.888.506.6887  
Fax: 303.730.1966  
nb-customerservice@bio-techne.com

### **Bio-Techne Canada**

21 Canmotor Ave  
Toronto, ON M8Z 4E6  
Canada  
Phone: 905.827.6400  
Toll Free: 855.668.8722  
Fax: 905.827.6402  
canada.inquires@bio-techne.com

### **Bio-Techne Ltd**

19 Barton Lane  
Abingdon Science Park  
Abingdon, OX14 3NB, United Kingdom  
Phone: (44) (0) 1235 529449  
Free Phone: 0800 37 34 15  
Fax: (44) (0) 1235 533420  
info.EMEA@bio-techne.com

### **General Contact Information**

[www.novusbio.com](http://www.novusbio.com)  
Technical Support: nb-technical@bio-techne.com  
Orders: nb-customerservice@bio-techne.com  
General: novus@novusbio.com

### **Limitations**

This product is for research use only and is not approved for use in humans or in clinical diagnosis. Secondary Antibodies are guaranteed for 1 year from date of receipt.

For more information on our 100% guarantee, please visit [www.novusbio.com/guarantee](http://www.novusbio.com/guarantee)

Earn gift cards/discounts by submitting a review: [www.novusbio.com/reviews/submit/NBP1-73637](http://www.novusbio.com/reviews/submit/NBP1-73637)

Earn gift cards/discounts by submitting a publication using this product:  
[www.novusbio.com/publications](http://www.novusbio.com/publications)

