

Product Datasheet

Goat anti-Human IgA/IgG/IgM (H+L) Secondary Antibody [FITC] NBP1-73307

Unit Size: 2 mg

Store lyophilized antibody at 4C in the dark. Aliquot reconstituted liquid and store at -20C. Avoid freeze-thaw cycles.

www.novusbio.com



technical@novusbio.com

Protocols, Publications, Related Products, Reviews, Research Tools and Images at:
www.novusbio.com/NBP1-73307

Updated 10/23/2024 v.20.1

Earn rewards for product
reviews and publications.

Submit a publication at www.novusbio.com/publications

Submit a review at www.novusbio.com/reviews/destination/NBP1-73307



NBP1-73307

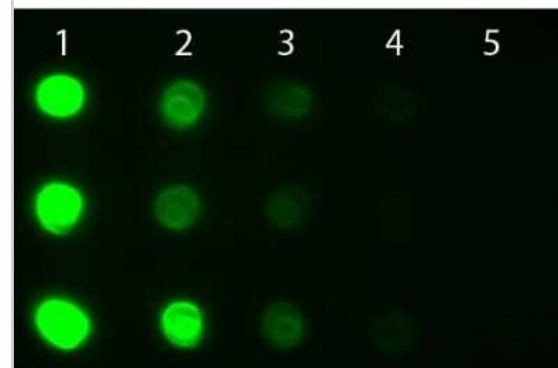
Goat anti-Human IgA/IgG/IgM (H+L) Secondary Antibody [FITC]

Product Information	
Unit Size	2 mg
Concentration	LYOPH mg/ml
Storage	Store lyophilized antibody at 4C in the dark. Aliquot reconstituted liquid and store at -20C. Avoid freeze-thaw cycles.
Clonality	Polyclonal
Preservative	0.01% Sodium Azide
Reconstitution Instructions	Reconstitute with 1.0 ml deionized water (or equivalent).
Isotype	IgG
Conjugate	FITC
Purity	Immunogen affinity purified
Buffer	Lyophilized from 0.02 M Potassium Phosphate, 0.15 M Sodium Chloride, pH 7.2, 10 mg/mL Bovine Serum Albumin (BSA) - Immunoglobulin and Protease free
Product Description	
Description	<p>Store vial at 4C prior to restoration. For extended storage aliquot contents and freeze at -20C or below. Avoid cycles of freezing and thawing. Centrifuge product if not completely clear after standing at room temperature. This product is stable for several weeks at 4C as an undiluted liquid. Dilute only prior to immediate use.</p> <p>This product was prepared from polyspecific antiserum by immunoaffinity chromatography using antigens coupled to agarose beads. Assay by immunoelectrophoresis resulted in a single precipitin arc against anti-Fluorescein, anti-Goat Serum, Human IgG, Human IgA and Human IgM</p>
Host	Goat
Species	Human
Specificity/Sensitivity	This reagent is suitable for the detection of all Human isotypes and chain combinations.
Immunogen	Human IgG, IgA and IgM whole molecules
Product Application Details	
Applications	Western Blot, Dot Blot, Fluorophore-linked immunosorbent assay, Flow Cytometry, Immunocytochemistry/ Immunofluorescence, Immunohistochemistry, Immunohistochemistry-Paraffin
Recommended Dilutions	Western Blot 1:100 - 1:250, Flow Cytometry 1:500 - 1:2500, Immunohistochemistry 1:10-1:500, Immunocytochemistry/ Immunofluorescence 1:1000 - 1:5000, Immunohistochemistry-Paraffin 1:1000-1:2500, Dot Blot, Fluorophore-linked immunosorbent assay 1:10000 - 1:50000
Application Notes	This product has been tested by dot blot and western blot and is designed for immunofluorescence microscopy, fluorescence based plate assays (FLISA) and fluorescent western blotting. This product is also suitable for multiplex analysis, including multicolor imaging, utilizing various commercial platforms.

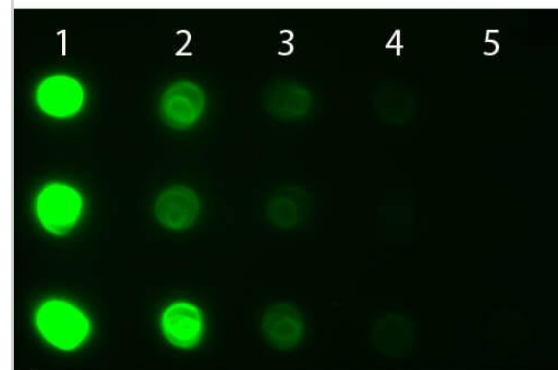


Images

Dot Blot: Goat anti-Human IgA/IgG/IgM (H+L) Secondary Antibody [FITC] [NBP1-73307] - Dot Blot of Goat anti-Human IgG IgA IgM Antibody Fluorescein Conjugated. Antigen: Row 1 - Human IgG Row 2 - Human IgA Row 3 - Human IgM. Load: Lane 1 - 100 ng Lane 2 - 33.3 ng Lane 3 - 11.1 ng Lane 4 - 3.70 ng Lane 5 - 1.23 ng. Primary antibody: n/a. Secondary antibody: Goat anti-Human IgG IgA IgM Antibody Fluorescein Conjugated at 1:1,000 for 60 min at RT. Blocked with blocking buffer for 60 min at RT.



Dot Blot of Goat anti-Human IgG IgA IgM Antibody Fluorescein Conjugated. Antigen: Row 1 - Human IgG Row 2 - Human IgA Row 3 - Human IgM. Load: Lane 1 - 100 ng Lane 2 - 33.3 ng Lane 3 - 11.1 ng Lane 4 - 3.70 ng Lane 5 - 1.23 ng. Primary antibody: n/a. Secondary antibody: Goat anti-Goat anti-Human IgA/IgG/IgM (H+L) Secondary Antibody [FITC] at 1:1,000 for 60 min at RT. Block for 60 min at RT.





Novus Biologicals USA

10730 E. Briarwood Avenue
Centennial, CO 80112
USA
Phone: 303.730.1950
Toll Free: 1.888.506.6887
Fax: 303.730.1966
nb-customerservice@bio-techne.com

Bio-Techne Canada

21 Canmotor Ave
Toronto, ON M8Z 4E6
Canada
Phone: 905.827.6400
Toll Free: 855.668.8722
Fax: 905.827.6402
canada.inquires@bio-techne.com

Bio-Techne Ltd

19 Barton Lane
Abingdon Science Park
Abingdon, OX14 3NB, United Kingdom
Phone: (44) (0) 1235 529449
Free Phone: 0800 37 34 15
Fax: (44) (0) 1235 533420
info.EMEA@bio-techne.com

General Contact Information

www.novusbio.com
Technical Support: nb-technical@bio-
techne.com
Orders: nb-customerservice@bio-techne.com
General: novus@novusbio.com

Limitations

This product is for research use only and is not approved for use in humans or in clinical diagnosis. Secondary Antibodies are guaranteed for 1 year from date of receipt.

For more information on our 100% guarantee, please visit www.novusbio.com/guarantee

Earn gift cards/discounts by submitting a review: www.novusbio.com/reviews/submit/NBP1-73307

Earn gift cards/discounts by submitting a publication using this product:
www.novusbio.com/publications

