

Product Datasheet

Goat anti-Rabbit IgG (H+L) Secondary Antibody [Rhodamine] (Pre-adsorbed) NBP1-73135

Unit Size: 2 mg

Store lyophilized antibody at 4C in the dark. Aliquot reconstituted liquid and store at -20C. Avoid freeze-thaw cycles.

www.novusbio.com



technical@novusbio.com

Protocols, Publications, Related Products, Reviews, Research Tools and Images at:
www.novusbio.com/NBP1-73135

Updated 10/23/2024 v.20.1

Earn rewards for product
reviews and publications.

Submit a publication at www.novusbio.com/publications

Submit a review at www.novusbio.com/reviews/destination/NBP1-73135



NBP1-73135

Goat anti-Rabbit IgG (H+L) Secondary Antibody [Rhodamine] (Pre-adsorbed)

Product Information	
Unit Size	2 mg
Concentration	LYOPH mg/ml
Storage	Store lyophilized antibody at 4C in the dark. Aliquot reconstituted liquid and store at -20C. Avoid freeze-thaw cycles.
Clonality	Polyclonal
Preservative	0.01% Sodium Azide
Reconstitution Instructions	Reconstitute with 1.0 ml deionized water (or equivalent).
Isotype	IgG
Conjugate	Rhodamine
Purity	Multi-step
Buffer	Lyophilized from 0.02 M Potassium Phosphate, 0.15 M Sodium Chloride, pH 7.2, 10 mg/mL Bovine Serum Albumin (BSA) - Immunoglobulin and Protease free

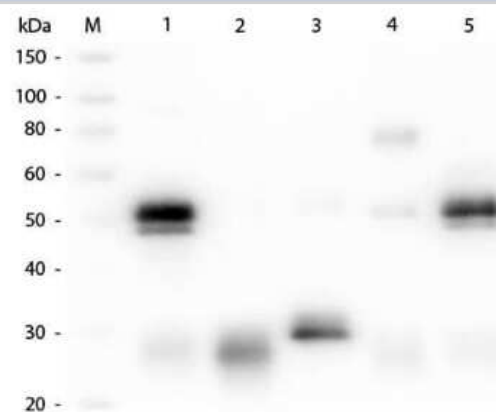
Product Description	
Description	<p>Store vial at 4C prior to restoration. For extended storage aliquot contents and freeze at -20C or below. Avoid cycles of freezing and thawing. Centrifuge product if not completely clear after standing at room temperature. This product is stable for several weeks at 4C as an undiluted liquid. Dilute only prior to immediate use.</p> <p>This product was prepared from monospecific antiserum by immunoaffinity chromatography using Rabbit IgG coupled to agarose beads followed by solid phase adsorption(s) to remove any unwanted reactivities. Assay by immunoelectrophoresis resulted in a single precipitin arc against anti-Goat Serum, Rabbit IgG and Rabbit Serum</p>
Host	Goat
Species	Rabbit
Specificity/Sensitivity	<p>This antibody was pre-adsorbed against Human Serum Proteins.</p> <p>No reaction was observed against Human Serum Proteins.</p>
Immunogen	Rabbit IgG whole molecule

Product Application Details	
Applications	Western Blot, Dot Blot, Fluorophore-linked immunosorbent assay, Flow Cytometry, Immunocytochemistry/ Immunofluorescence
Recommended Dilutions	Western Blot 1:1000 - 1:10000, Flow Cytometry 1:500 - 1:2500, Immunocytochemistry/ Immunofluorescence 1:1000 - 1:5000, Dot Blot, Fluorophore-linked immunosorbent assay 1:10000 - 1:50000
Application Notes	This secondary antibody is designed for immunofluorescence microscopy, fluorescence based plate assays (FLISA) and fluorescent western blotting. This product is also suitable for multiplex analysis, including multicolor imaging, utilizing various commercial platforms.



Images

Western Blot: Goat anti-Rabbit IgG (H+L) Secondary Antibody [Rhodamine] (Pre-adsorbed) [NBP1-73135] - Western Blot of Goat anti-Rabbit IgG (H+L) Secondary antibody [Rhodamine] (Pre-adsorbed). Lane M: 3 ul Molecular Ladder. Lane 1: Rabbit IgG whole molecule. Lane 2: Rabbit IgG F(ab) Fragment. Lane 3: Rabbit IgG F(c) Fragment. Lane 4: Rabbit IgM Whole Molecule. Lane 5: Normal Rabbit Serum. All samples were reduced. Load: 50 ng per lane. Block for 30 min at RT. Primary Antibody: Goat anti-Rabbit IgG (H+L) Secondary antibody [Rhodamine] (Pre-adsorbed) 1:1,000 for 60 min at RT. Secondary antibody: Anti-Goat IgG (DONKEY) Peroxidase Conjugated Antibody 1:40,000 in blocking buffer for 30 min at RT. Predicted/Obsevered Size: 25 and 50 kDa for Rabbit IgG and Serum, 25 kDa for F(c) and F(ab), 70 and 23 kDa for IgM. Rabbit F(c) migrates slightly higher.



Dot Blot: Goat anti-Rabbit IgG (H+L) Secondary Antibody [Rhodamine] (Pre-adsorbed) [NBP1-73135] - Dot Blot results of Goat anti-Rabbit IgG (H+L) Secondary antibody [Rhodamine] (Pre-adsorbed). Dots are Rabbit IgG at (1) 100ng, (2) 33.3ng, (3) 11.1ng, (4) 3.70ng, (5) 1.23ng. Blocking buffer for 60 min at RT. Primary Antibody: none. Secondary Antibody: Goat Anti-Rabbit IgG Antibody TRITC at 1ug/mL for 1hr at RT. Imaged with ChemiDoc, Rhodamine filter.





Novus Biologicals USA

10730 E. Briarwood Avenue
Centennial, CO 80112
USA
Phone: 303.730.1950
Toll Free: 1.888.506.6887
Fax: 303.730.1966
nb-customerservice@bio-techne.com

Bio-Techne Canada

21 Canmotor Ave
Toronto, ON M8Z 4E6
Canada
Phone: 905.827.6400
Toll Free: 855.668.8722
Fax: 905.827.6402
canada.inquires@bio-techne.com

Bio-Techne Ltd

19 Barton Lane
Abingdon Science Park
Abingdon, OX14 3NB, United Kingdom
Phone: (44) (0) 1235 529449
Free Phone: 0800 37 34 15
Fax: (44) (0) 1235 533420
info.EMEA@bio-techne.com

General Contact Information

www.novusbio.com
Technical Support: nb-technical@bio-
techne.com
Orders: nb-customerservice@bio-techne.com
General: novus@novusbio.com

Limitations

This product is for research use only and is not approved for use in humans or in clinical diagnosis. Secondary Antibodies are guaranteed for 1 year from date of receipt.

For more information on our 100% guarantee, please visit www.novusbio.com/guarantee

Earn gift cards/discounts by submitting a review: www.novusbio.com/reviews/submit/NBP1-73135

Earn gift cards/discounts by submitting a publication using this product:
www.novusbio.com/publications

