

Product Datasheet

Rabbit anti-Mouse IgG2a Heavy Chain Secondary Antibody NBP1-72794

Unit Size: 1 mg

Store at 4C short term. Aliquot and store at -20C long term. Avoid freeze-thaw cycles.

www.novusbio.com



technical@novusbio.com

Publications: 2

Protocols, Publications, Related Products, Reviews, Research Tools and Images at:
www.novusbio.com/NBP1-72794

Updated 10/23/2024 v.20.1

Earn rewards for product
reviews and publications.

Submit a publication at www.novusbio.com/publications

Submit a review at www.novusbio.com/reviews/destination/NBP1-72794



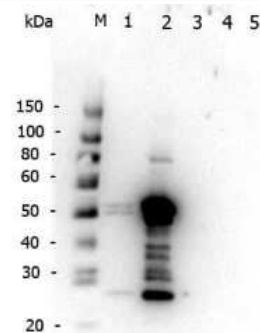
NBP1-72794**Rabbit anti-Mouse IgG2a Heavy Chain Secondary Antibody**

Product Information	
Unit Size	1 mg
Concentration	Please see the vial label for concentration. If unlisted please contact technical services.
Storage	Store at 4C short term. Aliquot and store at -20C long term. Avoid freeze-thaw cycles.
Clonality	Polyclonal
Preservative	0.01% Sodium Azide
Isotype	IgG
Purity	Multi-step
Buffer	0.02 M Potassium Phosphate, 0.15 M Sodium Chloride, pH 7.2
Product Description	
Description	<p>This product was prepared from monospecific antiserum by immunoaffinity chromatography using antigens coupled to agarose beads followed by solid phase adsorption(s) to remove any unwanted reactivities. Assay by immunoelectrophoresis resulted in a single precipitin arc against anti-Rabbit Serum, Mouse Serum and Mouse IgG2a. No arcs were detected against IgG1, IgG2b and IgG3</p> <p>Store vial at 4C prior to opening. This product is stable for several weeks at 4C as an undiluted liquid. Dilute only prior to immediate use. For extended storage aliquot contents and freeze at -20C or below. Avoid cycles of freezing and thawing.</p>
Host	Rabbit
Species	Mouse
Specificity/Sensitivity	Specificity was confirmed by ELISA. For IgG1, IgG2b and IgG3 reactivity was less than 5% against target (IgG2a Heavy Chain, IgG).
Immunogen	Mouse IgG2a heavy chain
Product Application Details	
Applications	Western Blot, Dot Blot, ELISA, Fluorophore-linked immunosorbent assay, Flow Cytometry, Immunohistochemistry
Recommended Dilutions	Western Blot 1:4000 - 1:20000, Flow Cytometry, ELISA 1:15000 - 1:30000, Immunohistochemistry 1:2000 - 1:10000, Dot Blot, Fluorophore-linked immunosorbent assay
Application Notes	This product has been tested by ELISA, dot blot, and western blot and is suitable for immunohistochemistry requiring extremely low background levels, lot-to-lot consistency, high titer and specificity.

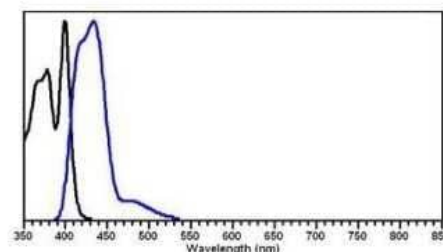


Images

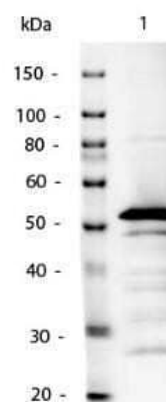
Western Blot: Rabbit anti-Mouse IgG2a Heavy Chain Secondary Antibody [NBP1-72794] - Western Blot of Rabbit anti-Mouse IgG2a Heavy Chain Secondary antibody. Lane 1: Mouse IgG1. Lane 2: Mouse IgG2a. Lane 3: Mouse IgG2b. Lane 4: Mouse IgG3. Lane 5: Mouse IgM. Load: 5 ng per lane. Primary antibody: Mouse IgG2a antibody at 1 ug/mL for overnight at 4C. Secondary antibody: Gt-anti-Rabbit HRP at 1:40,000 for 30 min at RT. Block: Blocking Buffer for Fluorescent Western Blotting for 30 min at RT. Predicted/Observed size: 50 kDa and 25 kDa, 50 kDa and 25 kDa for Mouse IgG2a. Other band(s): Weak reactivity for to Mouse IgG1.



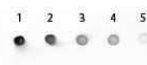
Flow Cytometry: Rabbit anti-Mouse IgG2a Heavy Chain Secondary Antibody [NBP1-72794] - Fluorophore-linked immunosorbent assay: Rabbit anti-Mouse IgG2a Antibody [DyLight 405] [NBP1-72921]



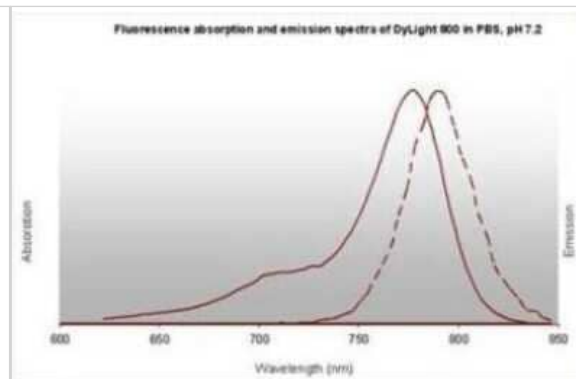
Western Blot: Rabbit anti-Mouse IgG2a Heavy Chain Secondary Antibody [NBP1-72794] - Lane 1: Mouse IgG2a. Lane 2: none. Load: 50ng per lane. Primary antibody: none. Secondary antibody: Mouse IgG2a Antibody Alkaline Phosphatase Conjugated at 1:1,000 o/n at 4C. Block: incubated with blocking buffer for 30 min at RT. Reaction visualized with alkaline phosphatase substrate for 30 seconds at RT. Predicted/Observed size: 55kDa for Mouse IgG2a.



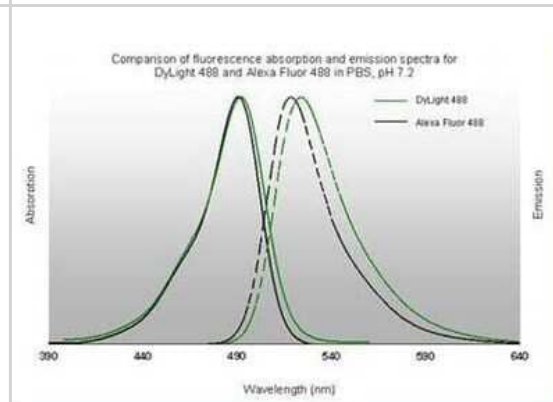
Dot Blot: Rabbit anti-Mouse IgG2a Heavy Chain Secondary Antibody [NBP1-72794] - Mouse IgG2a Load: Lane 1 - 200ng Lane 2 - 66.7ng Lane 3 - 22.2ng Lane 4 - 7.4 Lane 2.5ng



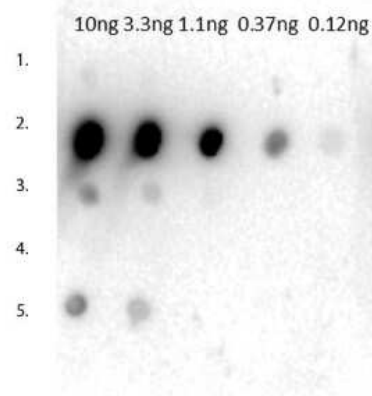
Fluorophore-linked immunosorbent assay: Rabbit anti-Mouse IgG2a Heavy Chain Secondary Antibody [NBP1-72794] - Rabbit anti-Mouse IgG2a Antibody [DyLight 800] [NBP1-72915]



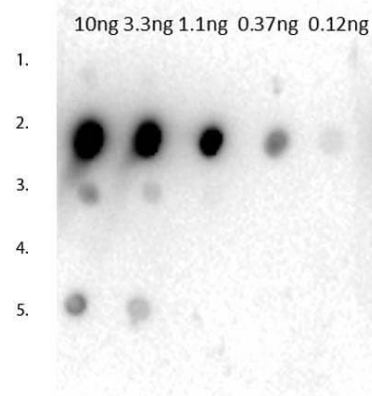
Fluorophore-linked immunosorbent assay: Rabbit anti-Mouse IgG2a Heavy Chain Secondary Antibody [NBP1-72794] - Fluorophore-linked immunosorbent assay: Rabbit anti-Mouse IgG2a Secondary Antibody [DyLight 488] [NBP1-72891] Image from the DyLight 488 version of this antibody.



Dot Blot: Rabbit anti-Mouse IgG2a Heavy Chain Secondary Antibody [NBP1-72794]



Dot Blot of Rabbit anti-Mouse IgG2a Heavy Chain Secondary Antibody. Tested with dilutions 10ng, 3.3ng, 1.1ng, 0.37ng, 0.12ng. Lane 1: Mouse IgG1



Publications

Flood MD, Wellington AJ, Cruz LA, Eggers ED Early diabetes impairs ON sustained ganglion cell light responses and adaptation without cell death or dopamine insensitivity Exp Eye Res 2020-09-10 [PMID: 32910942] (IF/IHC, Mouse)

Details:

Citation using the DyLight 550 version of this antibody.

Kim H, Kang K, Bang Y et al. MERS-CoV Spike Protein Vaccine and Inactivated Influenza Vaccine Formulated with Single Strand RNA Adjuvant Induce T-Cell Activation through Intranasal Immunization in Mice. Pharmaceutics 2020-05-10 [PMID: 32397649] (ELISA)

Details:

Citation using the HRP format of this antibody.





Novus Biologicals USA

10730 E. Briarwood Avenue
Centennial, CO 80112
USA
Phone: 303.730.1950
Toll Free: 1.888.506.6887
Fax: 303.730.1966
nb-customerservice@bio-techne.com

Bio-Techne Canada

21 Canmotor Ave
Toronto, ON M8Z 4E6
Canada
Phone: 905.827.6400
Toll Free: 855.668.8722
Fax: 905.827.6402
canada.inquires@bio-techne.com

Bio-Techne Ltd

19 Barton Lane
Abingdon Science Park
Abingdon, OX14 3NB, United Kingdom
Phone: (44) (0) 1235 529449
Free Phone: 0800 37 34 15
Fax: (44) (0) 1235 533420
info.EMEA@bio-techne.com

General Contact Information

www.novusbio.com
Technical Support: nb-technical@bio-techne.com
Orders: nb-customerservice@bio-techne.com
General: novus@novusbio.com

Limitations

This product is for research use only and is not approved for use in humans or in clinical diagnosis. Secondary Antibodies are guaranteed for 1 year from date of receipt.

For more information on our 100% guarantee, please visit www.novusbio.com/guarantee

Earn gift cards/discounts by submitting a review: www.novusbio.com/reviews/submit/NBP1-72794

Earn gift cards/discounts by submitting a publication using this product:
www.novusbio.com/publications

