

Product Datasheet

Goat anti-Human Lambda Light Chain Secondary Antibody NBP1-72788

Unit Size: 1 mg

Store at 4C short term. Aliquot and store at -20C long term. Avoid freeze-thaw cycles.

www.novusbio.com



technical@novusbio.com

Reviews: 1

Protocols, Publications, Related Products, Reviews, Research Tools and Images at:
www.novusbio.com/NBP1-72788

Updated 10/23/2024 v.20.1

Earn rewards for product
reviews and publications.

Submit a publication at www.novusbio.com/publications

Submit a review at www.novusbio.com/reviews/destination/NBP1-72788



NBP1-72788**Goat anti-Human Lambda Light Chain Secondary Antibody**

Product Information	
Unit Size	1 mg
Concentration	Please see the vial label for concentration. If unlisted please contact technical services.
Storage	Store at 4C short term. Aliquot and store at -20C long term. Avoid freeze-thaw cycles.
Clonality	Polyclonal
Preservative	0.1% Sodium Azide
Isotype	IgG
Purity	Multi-step
Buffer	0.125 M Sodium Borate, 0.075 M Sodium Chloride, 0.005 M EDTA, pH 8.0

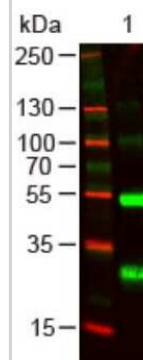
Product Description	
Description	<p>This product was prepared from monospecific antiserum by immunoaffinity chromatography using Human IgG coupled to agarose beads followed by solid phase adsorption(s) to remove any unwanted reactivities. Assay by immunoelectrophoresis resulted in a single precipitin arc against anti-Goat Serum. Solid phase adsorption(s) against a panel of Human IgG Kappa, IgM Kappa and IgA Kappa proteins was performed</p> <p>Store vial at 4C prior to opening. This product is stable for several weeks at 4C as an undiluted liquid. Dilute only prior to immediate use. For extended storage aliquot contents and freeze at -20C or below. Avoid cycles of freezing and thawing.</p>
Host	Goat
Gene ID	3537
Gene Symbol	IGLC1
Species	Human
Specificity/Sensitivity	Specificity was confirmed by ELISA.
Immunogen	Goat anti-Human Lambda Light Chain Secondary Antibody was produced by repeated immunization with Human lambda light chain molecule in goat.

Product Application Details	
Applications	Western Blot, ELISA, Immunocytochemistry/ Immunofluorescence, Immunohistochemistry
Recommended Dilutions	Western Blot 1:500 - 1:2000, ELISA 1:4000 - 1:20000, Immunohistochemistry 1:1000 - 1:5000, Immunocytochemistry/ Immunofluorescence
Application Notes	This product has been tested by ELISA and western blot and is ideal for investigators who routinely perform ELISA, Sandwich ELISA, titration assays, western-blot, immunoprecipitation and more generally immunoassays.

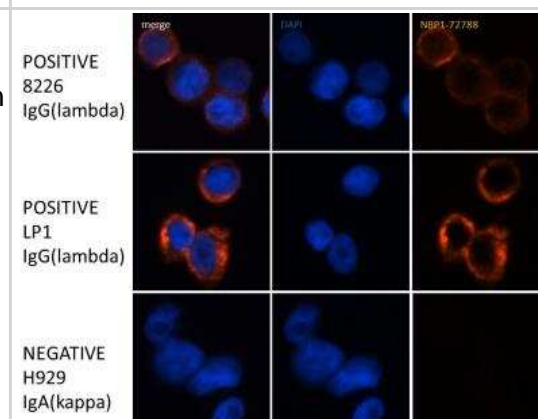


Images

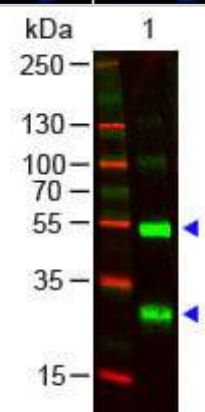
Western Blot: Goat anti-Human Lambda Light Chain Secondary Antibody [Unconjugated] [NBP1-72788] - Lane 1: Human lambda (lambda chain). Lane 2: None. Load: 100 ng per lane. Primary antibody: Human lambda (lambda chain) Antibody at 1:1000 for overnight at 4C. Secondary antibody: DyLight800 Donkey anti-Goat at 1:20,000 for 30 min at RT. Block: incubated with blocking buffer for 30 min at RT. Other Band(s): None.



Immunocytochemistry/Immunofluorescence: Goat anti-Human Lambda Light Chain Secondary Antibody [Unconjugated] [NBP1-72788] - Human multiple myeloma cell lines 8226, LP-1, H929. 1. Cells immersion-fixed in 4% PFA for 10 minutes, washed 3x with PBS. Permeabilized with 0.5% Triton X-100 for 5 minutes, washed 3x with PBS. Blocked with 10% donkey serum 1 hour. NBP1-72788 antibody at 1:5000 O/N at 4C, washed 3x with PBS. Secondary antibody at 1:2000 donkey F(ab')Cy3 anti-goat IgG (H+L) 1 hour at room temp (Jackson #705-166-147); washed 3x with PBS. Imaging with Olympus/BIOVIEW Cy3 filter 300ms exposure. ICC/IF image submitted by a verified customer review.



Western Blot of Goat anti-Human lambda chain Antibody. Lane 1: Human lambda chain. Lane 2: None. Load: 100 ng per lane. Primary antibody: Human lambda chain Antibody at 1:1000 for overnight at 4C. Secondary antibody: DyLight800 Donkey anti-Goat at 1:20,000 for 30 min at RT. Block for 30 min at RT. Other Band(s): None.





Novus Biologicals USA

10730 E. Briarwood Avenue
Centennial, CO 80112
USA
Phone: 303.730.1950
Toll Free: 1.888.506.6887
Fax: 303.730.1966
nb-customerservice@bio-techne.com

Bio-Techne Canada

21 Canmotor Ave
Toronto, ON M8Z 4E6
Canada
Phone: 905.827.6400
Toll Free: 855.668.8722
Fax: 905.827.6402
canada.inquires@bio-techne.com

Bio-Techne Ltd

19 Barton Lane
Abingdon Science Park
Abingdon, OX14 3NB, United Kingdom
Phone: (44) (0) 1235 529449
Free Phone: 0800 37 34 15
Fax: (44) (0) 1235 533420
info.EMEA@bio-techne.com

General Contact Information

www.novusbio.com
Technical Support: nb-technical@bio-
techne.com
Orders: nb-customerservice@bio-techne.com
General: novus@novusbio.com

Products Related to NBP1-72788

NB100-62139-1000ug	Lambda Light Chain Antibody - Azide and BSA Free
--------------------	--

Limitations

This product is for research use only and is not approved for use in humans or in clinical diagnosis. Secondary Antibodies are guaranteed for 1 year from date of receipt.

For more information on our 100% guarantee, please visit www.novusbio.com/guarantee

Earn gift cards/discounts by submitting a review: www.novusbio.com/reviews/submit/NBP1-72788

Earn gift cards/discounts by submitting a publication using this product:
www.novusbio.com/publications

