

# Product Datasheet

## Rabbit anti-Human IgA Heavy Chain Secondary Antibody NBP1-72777

Unit Size: 2 mg

Store at 4C short term. Aliquot and store at -20C long term. Avoid freeze-thaw cycles.

[www.novusbio.com](http://www.novusbio.com)



[technical@novusbio.com](mailto:technical@novusbio.com)

Protocols, Publications, Related Products, Reviews, Research Tools and Images at:  
[www.novusbio.com/NBP1-72777](http://www.novusbio.com/NBP1-72777)

Updated 2/3/2025 v.20.1

Earn rewards for product  
reviews and publications.

Submit a publication at [www.novusbio.com/publications](http://www.novusbio.com/publications)

Submit a review at [www.novusbio.com/reviews/destination/NBP1-72777](http://www.novusbio.com/reviews/destination/NBP1-72777)

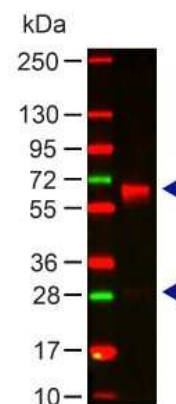


**NBP1-72777****Rabbit anti-Human IgA Heavy Chain Secondary Antibody**

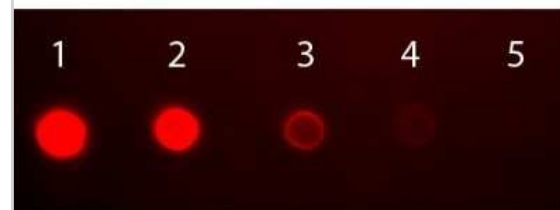
<b>Product Information</b>	
<b>Unit Size</b>	2 mg
<b>Concentration</b>	Please see the vial label for concentration. If unlisted please contact technical services.
<b>Storage</b>	Store at 4C short term. Aliquot and store at -20C long term. Avoid freeze-thaw cycles.
<b>Clonality</b>	Polyclonal
<b>Preservative</b>	0.01% Sodium Azide
<b>Isotype</b>	IgG
<b>Purity</b>	Multi-step
<b>Buffer</b>	0.02 M Potassium Phosphate, 0.15 M Sodium Chloride, pH 7.2
<b>Product Description</b>	
<b>Description</b>	<p>This product was prepared from monospecific antiserum by immunoaffinity chromatography using Human IgA coupled to agarose followed by solid phase adsorption(s). Assay by immunoelectrophoresis resulted in a single precipitin arc against anti-Rabbit Serum, Human IgA and Human Serum</p> <p>Store vial at 4C prior to opening. This product is stable for several weeks at 4C as an undiluted liquid. Dilute only prior to immediate use. For extended storage aliquot contents and freeze at -20C or below. Avoid cycles of freezing and thawing.</p>
<b>Host</b>	Rabbit
<b>Species</b>	Human
<b>Specificity/Sensitivity</b>	No reaction was observed against other human heavy or light chain proteins.
<b>Immunogen</b>	Human IgA alpha heavy chain
<b>Product Application Details</b>	
<b>Applications</b>	Western Blot, Dot Blot, ELISA, Immunohistochemistry
<b>Recommended Dilutions</b>	Western Blot 1:500 - 1:2000, ELISA 1:5000 - 1:20000, Immunohistochemistry 1:250 - 1:1000, Dot Blot
<b>Application Notes</b>	This product is tested for ELISA and western blotting. This product is also suitable for multiplex analysis, including multicolor imaging, utilizing various commercial platforms.

## Images

Western Blot: Rabbit anti-Human IgA Secondary Antibody (Pre-absorbed) [NBP1-72777] - Lane 1: Human IgA Load: 100 ng per lane  
 Primary antibody: HUMAN IgA (alpha chain) Antibody at 1:1000 for 60 min at RT  
 Secondary antibody: DyLight 649 goat anti-rabbit at 1:20,000 for 30 min at RT  
 Block: 5% BLOTTO 30 min at RT  
 Predicted/Observed size: 60 and 28 kDa, 60 and 28 kDa



Dot Blot: Rabbit anti-Human IgA Heavy Chain Secondary Antibody [NBP1-72777] - Antigen: Human IgA. Load: Lane 1 - 50 ng Lane 2 - 16.67 ng Lane 3 - 5.56 ng Lane 4 - 1.85 ng Lane 5 - 0.62 ng. Incubated for 1 hr at RT; blocked for 60 min at RT. Image from the FITC version of this antibody.





### **Novus Biologicals USA**

10730 E. Briarwood Avenue  
Centennial, CO 80112  
USA  
Phone: 303.730.1950  
Toll Free: 1.888.506.6887  
Fax: 303.730.1966  
nb-customerservice@bio-techne.com

### **Bio-Techne Canada**

21 Canmotor Ave  
Toronto, ON M8Z 4E6  
Canada  
Phone: 905.827.6400  
Toll Free: 855.668.8722  
Fax: 905.827.6402  
canada.inquires@bio-techne.com

### **Bio-Techne Ltd**

19 Barton Lane  
Abingdon Science Park  
Abingdon, OX14 3NB, United Kingdom  
Phone: (44) (0) 1235 529449  
Free Phone: 0800 37 34 15  
Fax: (44) (0) 1235 533420  
info.EMEA@bio-techne.com

### **General Contact Information**

www.novusbio.com  
Technical Support: nb-technical@bio-  
techne.com  
Orders: nb-customerservice@bio-techne.com  
General: novus@novusbio.com

### **Products Related to NBP1-72777**

---

NBP3-20648-100ug	IgA Heavy Chain Antibody (IGHA/7567R)
------------------	---------------------------------------

---

### **Limitations**

This product is for research use only and is not approved for use in humans or in clinical diagnosis. Secondary Antibodies are guaranteed for 1 year from date of receipt.

For more information on our 100% guarantee, please visit [www.novusbio.com/guarantee](http://www.novusbio.com/guarantee)

Earn gift cards/discounts by submitting a review: [www.novusbio.com/reviews/submit/NBP1-72777](http://www.novusbio.com/reviews/submit/NBP1-72777)

Earn gift cards/discounts by submitting a publication using this product:  
[www.novusbio.com/publications](http://www.novusbio.com/publications)

