

Product Datasheet

Goat anti-Human IgA/IgG/IgM (H+L) Secondary Antibody NBP1-72757

Unit Size: 2 mg

Store at 4C short term. Aliquot and store at -20C long term. Avoid freeze-thaw cycles.

www.novusbio.com



technical@novusbio.com

Protocols, Publications, Related Products, Reviews, Research Tools and Images at:
www.novusbio.com/NBP1-72757

Updated 10/23/2024 v.20.1

Earn rewards for product
reviews and publications.

Submit a publication at www.novusbio.com/publications

Submit a review at www.novusbio.com/reviews/destination/NBP1-72757



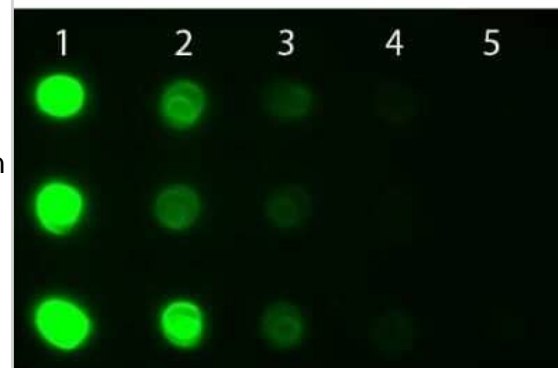
NBP1-72757**Goat anti-Human IgA/IgG/IgM (H+L) Secondary Antibody**

Product Information	
Unit Size	2 mg
Concentration	Please see the vial label for concentration. If unlisted please contact technical services.
Storage	Store at 4C short term. Aliquot and store at -20C long term. Avoid freeze-thaw cycles.
Clonality	Polyclonal
Preservative	0.01% Sodium Azide
Isotype	IgG
Purity	Multi-step
Buffer	0.02 M Potassium Phosphate, 0.15 M Sodium Chloride, pH 7.2
Product Description	
Description	<p>This product was prepared from polyspecific antiserum by immunoaffinity chromatography using antigens coupled to agarose beads followed by solid phase adsorption(s) to remove any unwanted reactivities. Assay by immunoelectrophoresis resulted in a single precipitin arc against anti-Goat Serum, Human IgG, Human IgA and Human IgM</p> <p>Store vial at 4C prior to opening. This product is stable for several weeks at 4C as an undiluted liquid. Dilute only prior to immediate use. For extended storage aliquot contents and freeze at -20C or below. Avoid cycles of freezing and thawing.</p>
Host	Goat
Species	Human
Specificity/Sensitivity	This reagent is suitable for the detection of all Human immunoglobulin subclasses and chain combinations.
Immunogen	Human IgG, IgA and IgM whole molecules
Product Application Details	
Applications	Western Blot, Dot Blot, ELISA, Immunohistochemistry
Recommended Dilutions	Western Blot 1:2000 - 1:10000, ELISA 1:70000, Immunohistochemistry 1:1000 - 1:5000, Dot Blot
Application Notes	This product has been tested by ELISA, SDS-PAGE, dot blot and is suitable for western blot and immunohistochemistry, as well as other assays requiring lot-to-lot consistency.

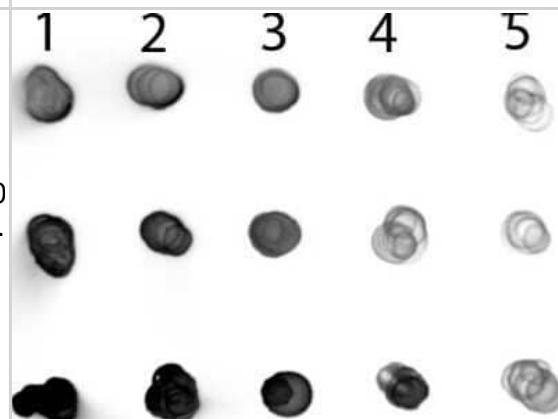


Images

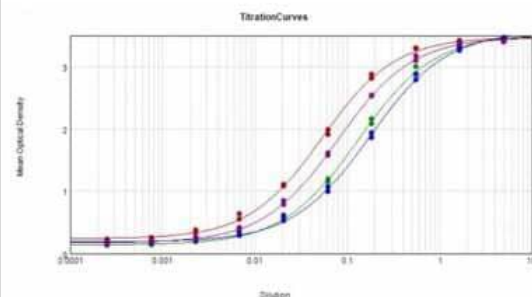
Dot Blot: Goat anti-Human IgA/IgG/IgM (H+L) Secondary Antibody [NBP1-72757] - Dot Blot of Goat anti-Human IgG IgA IgM Antibody Fluorescein Conjugated. Antigen: Row 1 - Human IgG Row 2 - Human IgA Row 3 - Human IgM. Load: Lane 1 - 100 ng Lane 2 - 33.3 ng Lane 3 - 11.1 ng Lane 4 - 3.70 ng Lane 5 - 1.23 ng. Primary antibody: n/a. Secondary antibody: Goat anti-Human IgG IgA IgM Antibody Fluorescein Conjugated at 1:1,000 for 60 min at RT. Blocked with blocking buffer for 60 min at RT. Image from the FITC version of this antibody.



Dot Blot: Goat anti-Human IgA/IgG/IgM (H+L) Secondary Antibody [NBP1-72757] - Antigen: Row 1 - Human IgG Row 2 - Human IgA Row 3 - Human IgM. Load: Lane 1 - 200 ng Lane 2 - 66.7 ng Lane 3 - 22.2 ng Lane 4 - 7.41 ng Lane 5 - 2.47 ng. Primary antibody: n/a. Secondary antibody: Goat anti-Human IgG IgA IgM Antibody Alkaline Phosphatase Conjugated at 1:1,000 for 1 HR at RT. Blocked with blocking buffer for 60 min at RT. Image from the Alkaline Phosphatase version of this antibody.



ELISA: Goat anti-Human IgA/IgG/IgM (H+L) Secondary Antibody [NBP1-72757] - ELISA Results of purified Goat anti-Human IgA/IgG/IgM (H+L) Secondary antibody tested against purified Human IgG, IgA, IgM. The working dilution for Anti-Human IgG, IgA, IgM is 1:20,000. Each well was coated in duplicate with 1.0 ug of Human IgG protein [Red Line], Human IgA [Green Line], Human IgM [Blue Line], Human IgG/A/M [Purple Line]. The starting dilution of antibody was 5ug/ml and the X-axis represents the Log10 of a 3-fold dilution. This titration is a 4-parameter curve fit where the IC50 is defined as the titer of the antibody. Assay performed using Donkey Anti-Goat IgG HRP conjugated and TMBE-1000 substrate.





Novus Biologicals USA

10730 E. Briarwood Avenue
Centennial, CO 80112
USA
Phone: 303.730.1950
Toll Free: 1.888.506.6887
Fax: 303.730.1966
nb-customerservice@bio-techne.com

Bio-Techne Canada

21 Canmotor Ave
Toronto, ON M8Z 4E6
Canada
Phone: 905.827.6400
Toll Free: 855.668.8722
Fax: 905.827.6402
canada.inquires@bio-techne.com

Bio-Techne Ltd

19 Barton Lane
Abingdon Science Park
Abingdon, OX14 3NB, United Kingdom
Phone: (44) (0) 1235 529449
Free Phone: 0800 37 34 15
Fax: (44) (0) 1235 533420
info.EMEA@bio-techne.com

General Contact Information

www.novusbio.com
Technical Support: nb-technical@bio-
techne.com
Orders: nb-customerservice@bio-techne.com
General: novus@novusbio.com

Limitations

This product is for research use only and is not approved for use in humans or in clinical diagnosis. Secondary Antibodies are guaranteed for 1 year from date of receipt.

For more information on our 100% guarantee, please visit www.novusbio.com/guarantee

Earn gift cards/discounts by submitting a review: www.novusbio.com/reviews/submit/NBP1-72757

Earn gift cards/discounts by submitting a publication using this product:
www.novusbio.com/publications

