

Product Datasheet

Sheep anti-Rabbit IgG (H+L) Secondary Antibody (Pre-adsorbed) NBP1-72740

Unit Size: 1 mg

Store at 4C short term. Aliquot and store at -20C long term. Avoid freeze-thaw cycles.

www.novusbio.com



technical@novusbio.com

Protocols, Publications, Related Products, Reviews, Research Tools and Images at:
www.novusbio.com/NBP1-72740

Updated 10/23/2024 v.20.1

Earn rewards for product
reviews and publications.

Submit a publication at www.novusbio.com/publications

Submit a review at www.novusbio.com/reviews/destination/NBP1-72740



NBP1-72740

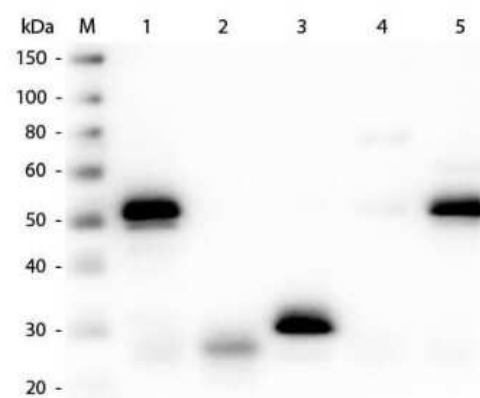
Sheep anti-Rabbit IgG (H+L) Secondary Antibody (Pre-adsorbed)

Product Information	
Unit Size	1 mg
Concentration	Please see the vial label for concentration. If unlisted please contact technical services.
Storage	Store at 4C short term. Aliquot and store at -20C long term. Avoid freeze-thaw cycles.
Clonality	Polyclonal
Preservative	0.01% Sodium Azide
Isotype	IgG
Purity	Multi-step
Buffer	0.02 M Potassium Phosphate, 0.15 M Sodium Chloride, pH 7.2
Product Description	
Description	<p>This product was prepared from monospecific antiserum by immunoaffinity chromatography using Rabbit IgG coupled to agarose beads followed by solid phase adsorption(s) to remove any unwanted reactivities. Assay by immunoelectrophoresis resulted in a single precipitin arc against anti-Sheep Serum, Rabbit IgG and Rabbit Serum</p> <p>Store vial at 4C prior to opening. This product is stable for several weeks at 4C as an undiluted liquid. Dilute only prior to immediate use. For extended storage aliquot contents and freeze at -20C or below. Avoid cycles of freezing and thawing.</p>
Host	Sheep
Species	Rabbit
Specificity/Sensitivity	<p>This antibody was pre-adsorbed against Bovine, Chicken, Goat, Guinea Pig, Horse, Human, Mouse, Rat, and Sheep Serum Proteins.</p> <p>No reaction was observed against Bovine, Chicken, Goat, Guinea Pig, Horse, Human, Mouse, Rat and Sheep Serum Proteins.</p>
Immunogen	Rabbit IgG whole molecule
Product Application Details	
Applications	Western Blot, ELISA, Fluorophore-linked immunosorbent assay, Immunocytochemistry/ Immunofluorescence, Immunohistochemistry
Recommended Dilutions	Western Blot 1:2000 - 1:10000, ELISA 1:20000 - 1:100000, Immunohistochemistry 1:1000 - 1:5000, Immunocytochemistry/ Immunofluorescence, Fluorophore-linked immunosorbent assay
Application Notes	This product is suitable for use in ELISA, immunohistochemistry, and western blot. Specific conditions for reactivity should be optimized by the end user.

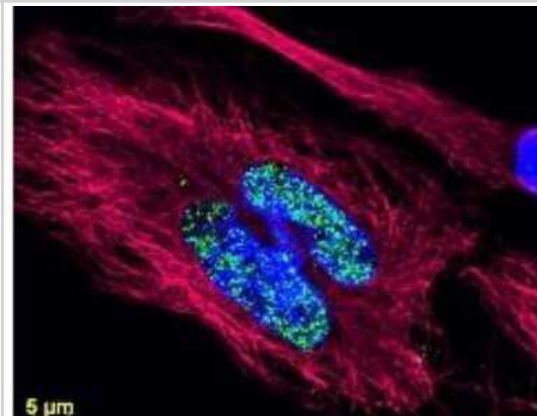


Images

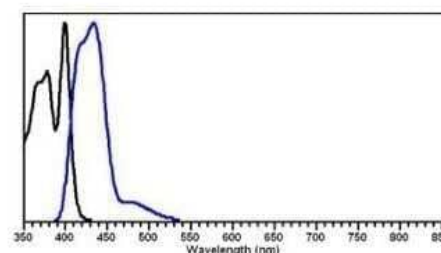
Western Blot: Sheep anti-Rabbit IgG (H+L) Secondary Antibody (Pre-adsorbed) [NBP1-72740] - Western Blot of Sheep anti-Rabbit IgG (H+L) Secondary antibody (Pre-adsorbed). Lane M: 3 ul Molecular Ladder. Lane 1: Rabbit IgG whole molecule. Lane 2: Rabbit IgG F(ab) Fragment. Lane 3: Rabbit IgG F(c) Fragment. Lane 4: Rabbit IgM Whole Molecule. Lane 5: Normal Rabbit Serum. All samples were reduced. Load: 50 ng per lane. Block for 30 min at RT. Primary Antibody: Sheep anti-Rabbit IgG (H+L) Secondary antibody (Pre-adsorbed) 1:3,000 for 60 min at RT. Secondary antibody: Anti-Sheep IgG (DONKEY) Peroxidase Conjugated Antibody 1:40,000 in blocking buffer for 30 min at RT. Predicted/Observed Size: 25 and 50 kDa for Rabbit IgG and Serum, 25 kDa for F(c) and F(ab), 70 and 23 kDa for IgM. Rabbit F(c) migrates slightly higher.



Immunocytochemistry/Immunofluorescence: Sheep anti-Rabbit IgG (H+L) Secondary Antibody (Pre-adsorbed) [NBP1-72740] - Immunocytochemistry/Immunofluorescence: Sheep anti-Rabbit IgG (H+L) Secondary Antibody [DyLight 488] (Pre-absorbed) [NBP1-72960]



Fluorophore-linked immunosorbent assay: Sheep anti-Rabbit IgG (H+L) Secondary Antibody (Pre-adsorbed) [NBP1-72740] - Using the DyLight 405 format of this antibody.





Novus Biologicals USA

10730 E. Briarwood Avenue
Centennial, CO 80112
USA
Phone: 303.730.1950
Toll Free: 1.888.506.6887
Fax: 303.730.1966
nb-customerservice@bio-techne.com

Bio-Techne Canada

21 Canmotor Ave
Toronto, ON M8Z 4E6
Canada
Phone: 905.827.6400
Toll Free: 855.668.8722
Fax: 905.827.6402
canada.inquires@bio-techne.com

Bio-Techne Ltd

19 Barton Lane
Abingdon Science Park
Abingdon, OX14 3NB, United Kingdom
Phone: (44) (0) 1235 529449
Free Phone: 0800 37 34 15
Fax: (44) (0) 1235 533420
info.EMEA@bio-techne.com

General Contact Information

www.novusbio.com
Technical Support: nb-technical@bio-techne.com
Orders: nb-customerservice@bio-techne.com
General: novus@novusbio.com

Limitations

This product is for research use only and is not approved for use in humans or in clinical diagnosis. Secondary Antibodies are guaranteed for 1 year from date of receipt.

For more information on our 100% guarantee, please visit www.novusbio.com/guarantee

Earn gift cards/discounts by submitting a review: www.novusbio.com/reviews/submit/NBP1-72740

Earn gift cards/discounts by submitting a publication using this product:
www.novusbio.com/publications

