

Product Datasheet

Goat anti-Chicken IgG (H+L) Secondary Antibody NBP1-72720

Unit Size: 2 mg

Store at 4C short term. Aliquot and store at -20C long term. Avoid freeze-thaw cycles.

www.novusbio.com



technical@novusbio.com

Publications: 1

Protocols, Publications, Related Products, Reviews, Research Tools and Images at:
www.novusbio.com/NBP1-72720

Updated 10/23/2024 v.20.1

Earn rewards for product
reviews and publications.

Submit a publication at www.novusbio.com/publications

Submit a review at www.novusbio.com/reviews/destination/NBP1-72720

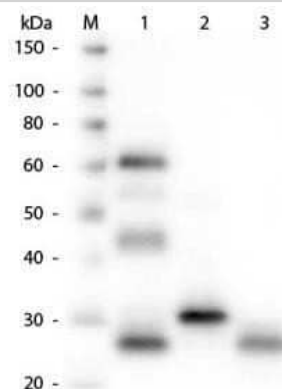


NBP1-72720**Goat anti-Chicken IgG (H+L) Secondary Antibody**

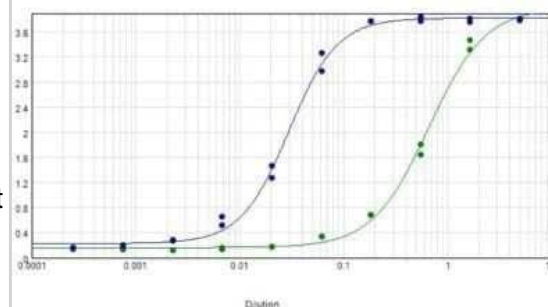
Product Information	
Unit Size	2 mg
Concentration	Please see the vial label for concentration. If unlisted please contact technical services.
Storage	Store at 4C short term. Aliquot and store at -20C long term. Avoid freeze-thaw cycles.
Clonality	Polyclonal
Preservative	0.01% Sodium Azide
Isotype	IgG
Purity	Multi-step
Buffer	0.02 M Potassium Phosphate, 0.15 M Sodium Chloride, pH 7.2
Product Description	
Description	<p>This product was prepared from monospecific antiserum by immunoaffinity chromatography using Chicken IgG coupled to agarose beads followed by solid phase adsorption(s) to remove any unwanted reactivities. Assay by immunoelectrophoresis resulted in a single precipitin arc against anti-Goat Serum, Chicken IgG and Chicken Serum.</p> <p>Store vial at 4C prior to opening. This product is stable for several weeks at 4C as an undiluted liquid. Dilute only prior to immediate use. For extended storage aliquot contents and freeze at -20C or below. Avoid cycles of freezing and thawing.</p>
Host	Goat
Species	Chicken
Immunogen	Chicken IgG whole molecule
Product Application Details	
Applications	Western Blot, Dot Blot, ELISA, Immunohistochemistry
Recommended Dilutions	Western Blot 1:2000 - 1:10000, ELISA 1:20000 - 1:100000, Immunohistochemistry 1:1000 - 1:5000, Dot Blot
Application Notes	This product has been tested by ELISA and is suitable for western blot and immunohistochemistry, as well as other assays requiring lot-to-lot consistency.

Images

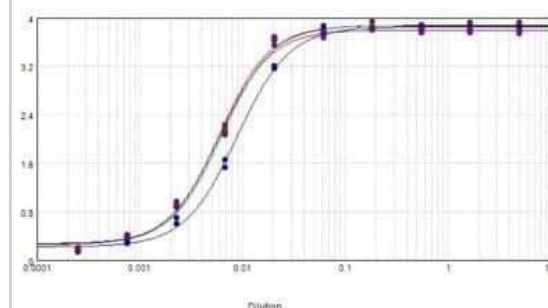
Western Blot: Goat anti-Chicken IgG (H+L) Secondary Antibody [NBP1-72720] - Lane 1: Chicken IgG whole molecule. Lane 2: Chicken IgG F(c) Fragment. Lane 3: Chicken IgG Fab Fragment. All samples were reduced. Load: 50 ng per lane. Block: incubated with blocking buffer for 30 min at RT. Primary Antibody: Anti-Chicken IgG (H&L) (GOAT) Antibody 1:1,000 for 60 min at RT. Secondary antibody: Anti-Goat IgG (DONKEY) Peroxidase Conjugated Antibody 1:40,000 in incubated with blocking buffer for 30 min at RT. Predicted/Observed Size: 25 and 72 kDa for Chicken IgG, 25 kDa for F(c) and Fab. Chicken F(c) migrates slightly higher. Image from the Alkaline Phosphatase version of this antibody.



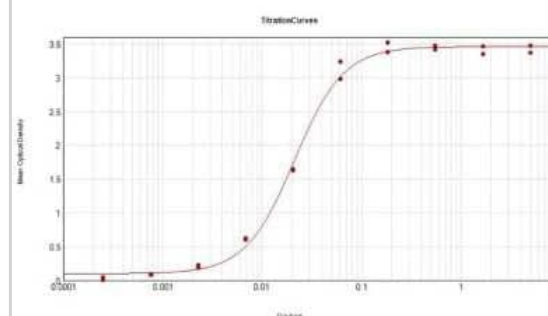
ELISA: Goat anti-Chicken IgG (H+L) Secondary Antibody [NBP1-72720] - ELISA results of purified Goat anti-Chicken IgG (H+L) Secondary Antibody [Biotin] tested against purified Chicken IgG. Each well was coated in duplicate with 1.0 ug of Chicken IgG. The starting dilution of antibody was 5ug/ml and the X-axis represents the Log10 of a 3-fold dilution. This titration is a 4-parameter curve fit where the IC50 is defined as the titer of the antibody. Assay performed using blocking buffer, Streptavidin HRP conjugate, and TMB substrate.. Using the Biotin format of this antibody.



ELISA: Goat anti-Chicken IgG (H+L) Secondary Antibody [NBP1-72720] - ELISA results of purified Goat anti-Chicken IgG (H+L) Secondary Antibody [HRP] tested against purified Chicken IgG. Each well was coated in duplicate with 1.0 ug of Chicken IgG (red line). The starting dilution of antibody was 5ug/ml and the X-axis represents the Log10 of a 3-fold dilution. This titration is a 4-parameter curve fit where the IC50 is defined as the titer of the antibody. Assay performed using TMB substrate.. Using the HRP format of this antibody.



ELISA: Goat anti-Chicken IgG (H+L) Secondary Antibody [NBP1-72720] - ELISA Results of Goat anti-Chicken IgG (H+L) Secondary antibody tested against purified Chicken IgG/IgY. Each well was coated in duplicate with 1.0 ug of Chicken IgG/IgY. The working dilution is 1:47,000. The starting dilution of antibody was 5ug/ml and the X-axis represents the Log10 of a 3-fold dilution. This titration is a 4-parameter curve fit where the IC50 is defined as the titer of the antibody. Assay performed using HRP Conjugated Stabilizer, Donkey Anti-Goat IgG mx10 HRP conjugated, and TMB substrate.



Publications

Amer SA, Al-Khalaifah HS, Gouda A et al. Potential Effects of Anthocyanin-Rich Roselle (*Hibiscus sabdariffa* L.) Extract on the Growth, Intestinal Histomorphology, Blood Biochemical Parameters, and the Immune Status of Broiler Chickens Antioxidants (Basel, Switzerland) 2022-03-13 [PMID: 35326194] (IF/IHC)



Novus Biologicals USA

10730 E. Briarwood Avenue
Centennial, CO 80112
USA

Phone: 303.730.1950

Toll Free: 1.888.506.6887

Fax: 303.730.1966

nb-customerservice@bio-techne.com

Bio-Techne Canada

21 Canmotor Ave
Toronto, ON M8Z 4E6
Canada

Phone: 905.827.6400

Toll Free: 855.668.8722

Fax: 905.827.6402

canada.inquires@bio-techne.com

Bio-Techne Ltd

19 Barton Lane
Abingdon Science Park
Abingdon, OX14 3NB, United Kingdom

Phone: (44) (0) 1235 529449

Free Phone: 0800 37 34 15

Fax: (44) (0) 1235 533420

info.EMEA@bio-techne.com

General Contact Information

www.novusbio.com

Technical Support: nb-technical@bio-techne.com

Orders: nb-customerservice@bio-techne.com

General: novus@novusbio.com

Limitations

This product is for research use only and is not approved for use in humans or in clinical diagnosis. Secondary Antibodies are guaranteed for 1 year from date of receipt.

For more information on our 100% guarantee, please visit www.novusbio.com/guarantee

Earn gift cards/discounts by submitting a review: www.novusbio.com/reviews/submit/NBP1-72720

Earn gift cards/discounts by submitting a publication using this product:

www.novusbio.com/publications

