

Product Datasheet

Recombinant Human WDR68 His Protein NBP1-72421-100ug

Unit Size: 100 ug

Store at 4C short term. Aliquot and store at -20C long term. Avoid freeze-thaw cycles.

www.novusbio.com



technical@novusbio.com

Protocols, Publications, Related Products, Reviews, Research Tools and Images at:
www.novusbio.com/NBP1-72421

Updated 10/23/2024 v.20.1

Earn rewards for product
reviews and publications.

Submit a publication at www.novusbio.com/publications

Submit a review at www.novusbio.com/reviews/destination/NBP1-72421



NBP1-72421-100ug

Recombinant Human WDR68 His Protein

Product Information

Unit Size	100 ug
Concentration	1 mg/ml
Storage	Store at 4C short term. Aliquot and store at -20C long term. Avoid freeze-thaw cycles.
Preservative	No Preservative
Purity	>90%, by SDS-PAGE
Buffer	20 mM Tris-HCl buffer (pH8.0), 0.4M UREA, 1 mM DTT
Target Molecular Weight	33.6 kDa

Product Description

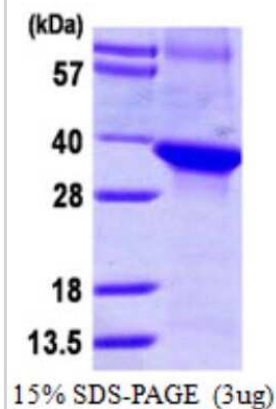
Description	<p>A denatured recombinant protein with a N-Terminal His-tag and corresponding to the amino acids 19-295 of Human WDR68</p> <p>Source: <i>E.coli</i></p> <p>Amino Acid Sequence: MGSSHHHHHH SSGLVPRGSH MUYAMNWSVR PDKRFRALG SFVEEYNNKV QLVGLDEESS EFICRNTFDH PYPTTKLMWI PDTKGVYPDL LATSGDYLRV WRVGETETRL ECLLNNNKNS DFCAPLTSFD WNEVDPYLLG TSSIDTTCTI WGLETGQVLG RVNLVSGHVK TQLIAHDKEV YDIAFSRAGG GRDMFASVGA DGSVRMFDLR HLEHSTIYE DPQHHPLRL CWNKQDPNYL ATMAMDGMEV VILDVRVPCT PVARLNNHRA CVNGIAWAPH SSCHICTAAD DHQALIWD</p>
Gene ID	10238
Gene Symbol	DCAF7
Species	Human

Product Application Details

Applications	SDS-Page
Recommended Dilutions	SDS-Page
Application Notes	Denatured protein is most likely not the best option for functional studies. It is better suited for Western Blot (WB) or imaging assays.

Images

SDS-Page: Recombinant Human WDR68 Protein [NBP1-72421] - 15% SDS-PAGE (3ug)





Novus Biologicals USA

10730 E. Briarwood Avenue
Centennial, CO 80112
USA
Phone: 303.730.1950
Toll Free: 1.888.506.6887
Fax: 303.730.1966
nb-customerservice@bio-techne.com

Bio-Techne Canada

21 Canmotor Ave
Toronto, ON M8Z 4E6
Canada
Phone: 905.827.6400
Toll Free: 855.668.8722
Fax: 905.827.6402
canada.inquires@bio-techne.com

Bio-Techne Ltd

19 Barton Lane
Abingdon Science Park
Abingdon, OX14 3NB, United Kingdom
Phone: (44) (0) 1235 529449
Free Phone: 0800 37 34 15
Fax: (44) (0) 1235 533420
info.EMEA@bio-techne.com

General Contact Information

www.novusbio.com
Technical Support: nb-technical@bio-techne.com
Orders: nb-customerservice@bio-techne.com
General: novus@novusbio.com

Products Related to NBP1-72421-100ug

NBP1-92590PEP	WDR68 Recombinant Protein Antigen
H00001859-M01	DYRK1A Antibody (7D10)
NBP1-92589	WDR68 Antibody
NB600-600	GLI-1 Antibody - BSA Free

Limitations

This product is for research use only and is not approved for use in humans or in clinical diagnosis. Peptides and proteins are guaranteed for 3 months from date of receipt.

For more information on our 100% guarantee, please visit www.novusbio.com/guarantee

Earn gift cards/discounts by submitting a review: www.novusbio.com/reviews/submit/NBP1-72421

Earn gift cards/discounts by submitting a publication using this product:
www.novusbio.com/publications

