

Product Datasheet

NDUFAF2 Antibody NBP1-72135

Unit Size: 0.05 mg

Store at 4C short term. Aliquot and store at -20C long term. Avoid freeze-thaw cycles.

www.novusbio.com



technical@novusbio.com

Protocols, Publications, Related Products, Reviews, Research Tools and Images at:
www.novusbio.com/NBP1-72135

Updated 3/28/2021 v.20.1

Earn rewards for product
reviews and publications.

Submit a publication at www.novusbio.com/publications

Submit a review at www.novusbio.com/reviews/destination/NBP1-72135



NBP1-72135**NDUFAF2 Antibody**

Product Information	
Unit Size	0.05 mg
Concentration	1 mg/ml
Storage	Store at 4C short term. Aliquot and store at -20C long term. Avoid freeze-thaw cycles.
Clonality	Polyclonal
Preservative	0.02% Sodium Azide
Isotype	IgG
Purity	Peptide affinity purified
Buffer	PBS

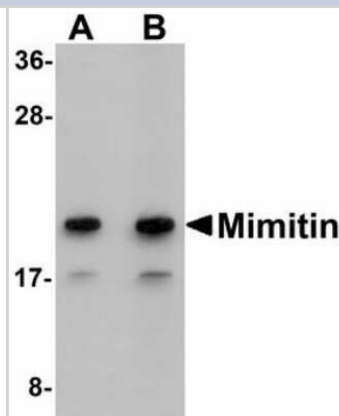
Product Description	
Host	Rabbit
Gene ID	91942
Gene Symbol	NDUFAF2
Species	Human
Immunogen	A 14 amino acid synthetic peptide near the C-terminus of human NDUFAF2. The immunogen is located within the last 50 amino acids of NDUFAF2.

Product Application Details	
Applications	Western Blot, ELISA, Immunohistochemistry, Immunohistochemistry-Paraffin, Immunofluorescence
Recommended Dilutions	Western Blot 1 - 2 ug/ml, ELISA 1:100 - 1:2000, Immunohistochemistry, Immunohistochemistry-Paraffin 5 ug/ml, Immunofluorescence 1:10 - 1:500

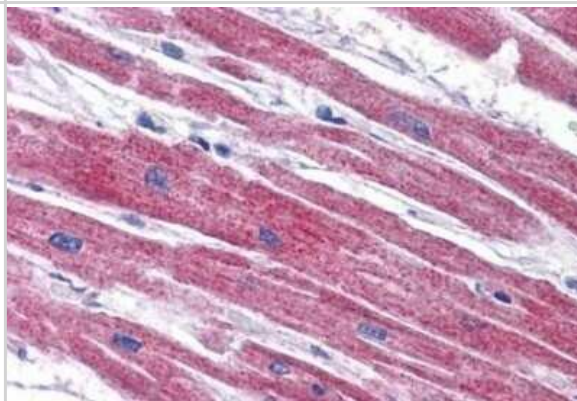


Images

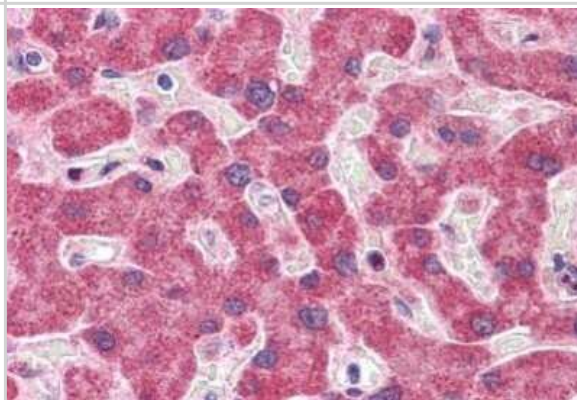
Western Blot: NDUFAF2 Antibody [NBP1-72135] - Western blot of Mimitin in Raji cell lysate with Mimitin antibody at (A) 1 and (B) 2 ug/ml.



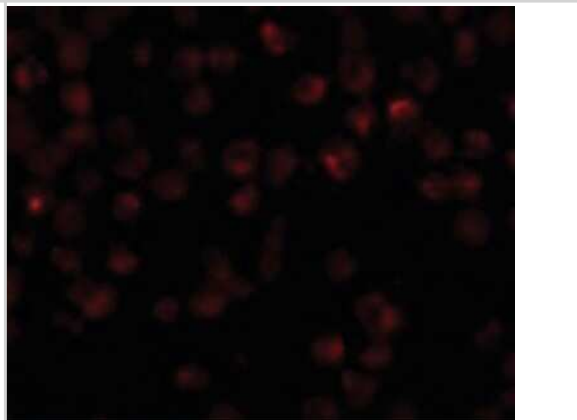
Immunohistochemistry-Paraffin: NDUFAF2 Antibody [NBP1-72135] - Staining of human heart. Immunohistochemistry of formalin-fixed, paraffin-embedded tissue after heat-induced antigen retrieval. Antibody concentration 5 ug/ml.



Immunohistochemistry-Paraffin: NDUFAF2 Antibody [NBP1-72135] - Staining of human liver. Immunohistochemistry of formalin-fixed, paraffin-embedded tissue after heat-induced antigen retrieval. Antibody concentration 5 ug/ml.



Immunofluorescence: NDUFAF2 Antibody [NBP1-72135] - Immunofluorescence of Mimitin in Raji cells with Mimitin antibody at 20 ug/ml.





Novus Biologicals USA

10730 E. Briarwood Avenue
Centennial, CO 80112
USA
Phone: 303.730.1950
Toll Free: 1.888.506.6887
Fax: 303.730.1966
nb-customerservice@bio-techne.com

Bio-Techne Canada

21 Canmotor Ave
Toronto, ON M8Z 4E6
Canada
Phone: 905.827.6400
Toll Free: 855.668.8722
Fax: 905.827.6402
canada.inquires@bio-techne.com

Bio-Techne Ltd

19 Barton Lane
Abingdon Science Park
Abingdon, OX14 3NB, United Kingdom
Phone: (44) (0) 1235 529449
Free Phone: 0800 37 34 15
Fax: (44) (0) 1235 533420
info.EMEA@bio-techne.com

General Contact Information

www.novusbio.com
Technical Support: nb-technical@bio-techne.com
Orders: nb-customerservice@bio-techne.com
General: novus@novusbio.com

Limitations

This product is for research use only and is not approved for use in humans or in clinical diagnosis. Primary Antibodies are guaranteed for 1 year from date of receipt.

For more information on our 100% guarantee, please visit www.novusbio.com/guarantee

Earn gift cards/discounts by submitting a review: www.novusbio.com/reviews/submit/NBP1-72135

Earn gift cards/discounts by submitting a publication using this product:
www.novusbio.com/publications

