

Product Datasheet

SYPL2 Antibody NBP1-72119

Unit Size: 0.05 mg

Store at 4C short term. Aliquot and store at -20C long term. Avoid freeze-thaw cycles.

www.novusbio.com



technical@novusbio.com

Protocols, Publications, Related Products, Reviews, Research Tools and Images at:
www.novusbio.com/NBP1-72119

Updated 3/28/2021 v.20.1

Earn rewards for product
reviews and publications.

Submit a publication at www.novusbio.com/publications

Submit a review at www.novusbio.com/reviews/destination/NBP1-72119



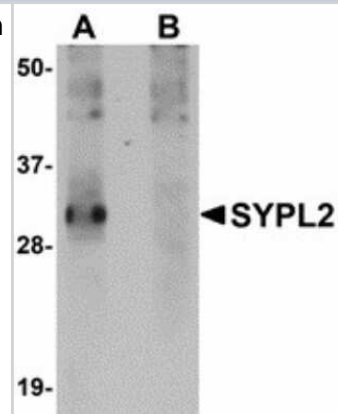
NBP1-72119**SYPL2 Antibody**

| Product Information | |
|------------------------------------|---|
| Unit Size | 0.05 mg |
| Concentration | 1 mg/ml |
| Storage | Store at 4C short term. Aliquot and store at -20C long term. Avoid freeze-thaw cycles. |
| Clonality | Polyclonal |
| Preservative | 0.02% Sodium Azide |
| Isotype | IgG |
| Purity | Peptide affinity purified |
| Buffer | PBS |
| Product Description | |
| Host | Rabbit |
| Gene ID | 284612 |
| Gene Symbol | SYPL2 |
| Species | Human, Mouse, Rat |
| Reactivity Notes | Human, Mouse, Rat |
| Specificity/Sensitivity | At least two isoforms of SYPL2 are known to exist. SYPL2 antibody will not cross-react with SYPL1. |
| Immunogen | A 15 amino acid synthetic peptide near the C-terminus of human SYPL2. The immunogen is located within the last 50 amino acids of SYPL2. |
| Product Application Details | |
| Applications | Western Blot, ELISA, Immunocytochemistry/Immunofluorescence, Immunohistochemistry, Immunohistochemistry-Paraffin |
| Recommended Dilutions | Western Blot 1-2 ug/ml, ELISA 1:100 - 1:2000, Immunohistochemistry, Immunocytochemistry/Immunofluorescence, Immunohistochemistry-Paraffin 5 ug/ml |

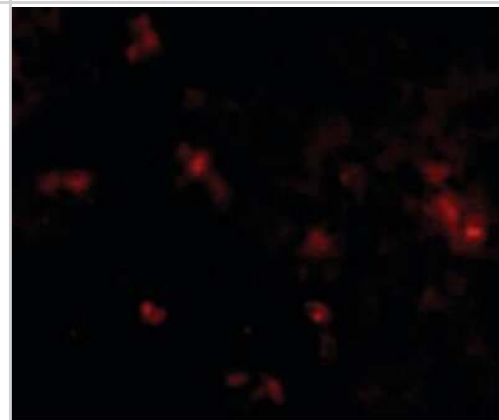


Images

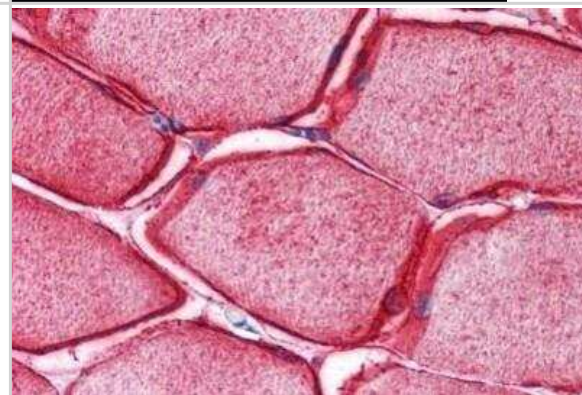
Western Blot: SYPL2 Antibody [NBP1-72119] - Western blot of SYPL2 in human spleen tissue lysate with SYPL2 antibody at 1 ug/ml in (A) the absence and (B) the presence of blocking peptide.



Immunocytochemistry/Immunofluorescence: SYPL2 Antibody [NBP1-72119] - Immunofluorescence of SYPL2 in cells with SYPL2 antibody.



Immunohistochemistry-Paraffin: SYPL2 Antibody [NBP1-72119] - Analysis of anti-SYPL2 antibody with human skeletal muscle at concentration 5 ug/ml.





Novus Biologicals USA

10730 E. Briarwood Avenue
Centennial, CO 80112
USA
Phone: 303.730.1950
Toll Free: 1.888.506.6887
Fax: 303.730.1966
nb-customerservice@bio-techne.com

Bio-Techne Canada

21 Canmotor Ave
Toronto, ON M8Z 4E6
Canada
Phone: 905.827.6400
Toll Free: 855.668.8722
Fax: 905.827.6402
canada.inquires@bio-techne.com

Bio-Techne Ltd

19 Barton Lane
Abingdon Science Park
Abingdon, OX14 3NB, United Kingdom
Phone: (44) (0) 1235 529449
Free Phone: 0800 37 34 15
Fax: (44) (0) 1235 533420
info.EMEA@bio-techne.com

General Contact Information

www.novusbio.com
Technical Support: nb-technical@bio-
techne.com
Orders: nb-customerservice@bio-techne.com
General: novus@novusbio.com

Limitations

This product is for research use only and is not approved for use in humans or in clinical diagnosis. Primary Antibodies are guaranteed for 1 year from date of receipt.

For more information on our 100% guarantee, please visit www.novusbio.com/guarantee

Earn gift cards/discounts by submitting a review: www.novusbio.com/reviews/submit/NBP1-72119

Earn gift cards/discounts by submitting a publication using this product:
www.novusbio.com/publications

