

# Product Datasheet

## CLCN5 Antibody - BSA Free

### NBP1-69123

Unit Size: 100 ul

Store at 4C short term. Aliquot and store at -20C long term. Avoid freeze-thaw cycles.

[www.novusbio.com](http://www.novusbio.com)



[technical@novusbio.com](mailto:technical@novusbio.com)

Protocols, Publications, Related Products, Reviews, Research Tools and Images at:  
[www.novusbio.com/NBP1-69123](http://www.novusbio.com/NBP1-69123)

Updated 2/21/2025 v.20.1

Earn rewards for product  
reviews and publications.

Submit a publication at [www.novusbio.com/publications](http://www.novusbio.com/publications)

Submit a review at [www.novusbio.com/reviews/destination/NBP1-69123](http://www.novusbio.com/reviews/destination/NBP1-69123)



**NBP1-69123**

CLCN5 Antibody - BSA Free

**Product Information**

|                                |  |
|--------------------------------|--|
| <b>Unit Size</b>               | 100 ul   |
| <b>Concentration</b>           | 0.5 mg/ml  |
| <b>Storage</b>                 | Store at 4C short term. Aliquot and store at -20C long term. Avoid freeze-thaw cycles. |
| <b>Clonality</b>               | Polyclonal   |
| <b>Preservative</b>            | 0.09% Sodium Azide   |
| <b>Isotype</b>                 | IgG  |
| <b>Purity</b>                  | Affinity purified  |
| <b>Buffer</b>                  | PBS, 2% Sucrose  |
| <b>Target Molecular Weight</b> | 83 kDa   |

**Product Description**

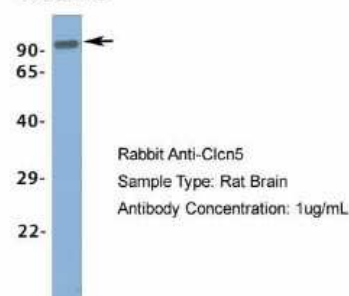
|                    |  |
|--------------------|--|
| <b>Description</b> | The addition of 50% glycerol is optional for those storing this antibody at -20C and not aliquoting smaller units. However, please note that glycerol may interrupt some downstream antibody applications and should be added with caution.  |
| <b>Host</b>        | Rabbit   |
| <b>Gene ID</b>     | 1184   |
| <b>Gene Symbol</b> | CLCN5  |
| <b>Species</b>     | Mouse, Rat   |
| <b>Immunogen</b>   | Synthetic peptides corresponding to Clcn5 (chloride channel 5) The peptide sequence was selected from the middle region of Clcn5. Peptide sequence LVVIMFELTGGLEYIVPLMAAAMTSKWVADALGREGIYDAHIRLNGYPFL. The peptide sequence for this immunogen was taken from within the described region. |

**Product Application Details**

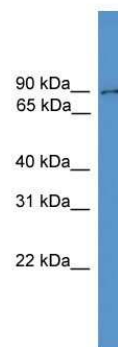
|                              |                        |
|------------------------------|------------------------|
| <b>Applications</b>          | Western Blot           |
| <b>Recommended Dilutions</b> | Western Blot 1.0 ug/ml |

**Images**

Western Blot: CLCN5 Antibody [NBP1-69123] - Rat Brain Antibody  
Dilution: 1.0 ug/ml

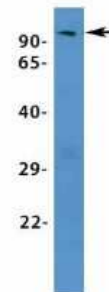
**Clcn5**

Western Blot: CLCN5 Antibody [NBP1-69123] - Mouse Brain lysate, concentration 0.2-1 ug/ml.



Western Blot: CLCN5 Antibody [NBP1-69123] - Rat Liver. Antibody Dilution: 1.0 ug/ml.

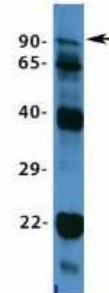
**Clcn5**



Rabbit Anti-Clcn5  
Sample Type: Rat Liver  
Antibody Concentration: 1ug/mL

Western Blot: CLCN5 Antibody [NBP1-69123] - Sample Type: Mouse Brain Antibody Dilution: 1.0ug/ml

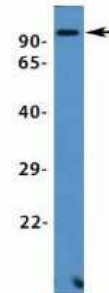
**Clcn5**



Rabbit Anti-Clcn5  
Sample Type: Mouse Brain  
Antibody Concentration: 1ug/mL

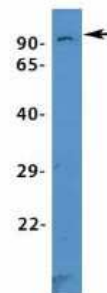
Western Blot: CLCN5 Antibody [NBP1-69123] - Sample Type: Mouse Heart Antibody Dilution: 1.0ug/ml

**Clcn5**



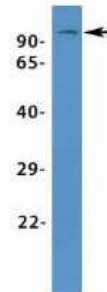
Rabbit Anti-Clcn5  
Sample Type: Rat Heart  
Antibody Concentration: 1ug/mL

Western Blot: CLCN5 Antibody [NBP1-69123] - Sample Type: Mouse  
Kidney Antibody Dilution: 1.0ug/ml

**Clcn5**

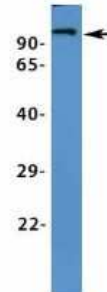
Rabbit Anti-Clcn5  
Sample Type: Mouse Kidney  
Antibody Concentration: 1ug/mL

Western Blot: CLCN5 Antibody [NBP1-69123] - Rat Lung Antibody  
Dilution: 1.0 ug/ml

**Clcn5**

Rabbit Anti-Clcn5  
Sample Type: Rat Lung  
Antibody Concentration: 1ug/mL

Western Blot: CLCN5 Antibody [NBP1-69123] - Rat Muscle Antibody  
Dilution: 1.0 ug/ml

**Clcn5**

Rabbit Anti-Clcn5  
Sample Type: Rat Muscle  
Antibody Concentration: 1ug/mL



### **Novus Biologicals USA**

10730 E. Briarwood Avenue  
Centennial, CO 80112  
USA  
Phone: 303.730.1950  
Toll Free: 1.888.506.6887  
Fax: 303.730.1966  
nb-customerservice@bio-techne.com

### **Bio-Techne Canada**

21 Canmotor Ave  
Toronto, ON M8Z 4E6  
Canada  
Phone: 905.827.6400  
Toll Free: 855.668.8722  
Fax: 905.827.6402  
canada.inquires@bio-techne.com

### **Bio-Techne Ltd**

19 Barton Lane  
Abingdon Science Park  
Abingdon, OX14 3NB, United Kingdom  
Phone: (44) (0) 1235 529449  
Free Phone: 0800 37 34 15  
Fax: (44) (0) 1235 533420  
info.EMEA@bio-techne.com

### **General Contact Information**

[www.novusbio.com](http://www.novusbio.com)  
Technical Support: [nb-technical@bio-techne.com](mailto:nb-technical@bio-techne.com)  
Orders: [nb-customerservice@bio-techne.com](mailto:nb-customerservice@bio-techne.com)  
General: [novus@novusbio.com](mailto:novus@novusbio.com)

### **Products Related to NBP1-69123**

---

|               |   |
|---------------|---|
| HAF008        | Goat anti-Rabbit IgG Secondary Antibody [HRP]       |
| NB7160        | Goat anti-Rabbit IgG (H+L) Secondary Antibody [HRP] |
| NBP2-24891    | Rabbit IgG Isotype Control                          |
| NBP1-84451PEP | CLCN5 Recombinant Protein Antigen                   |

---

### **Limitations**

This product is for research use only and is not approved for use in humans or in clinical diagnosis. Primary Antibodies are guaranteed for 1 year from date of receipt.

For more information on our 100% guarantee, please visit [www.novusbio.com/guarantee](http://www.novusbio.com/guarantee)

Earn gift cards/discounts by submitting a review: [www.novusbio.com/reviews/submit/NBP1-69123](http://www.novusbio.com/reviews/submit/NBP1-69123)

Earn gift cards/discounts by submitting a publication using this product:  
[www.novusbio.com/publications](http://www.novusbio.com/publications)

