

# Product Datasheet

## CRY1 Antibody - BSA Free NBP1-69080

Unit Size: 100 ul

Store at 4C short term. Aliquot and store at -20C long term. Avoid freeze-thaw cycles.

[www.novusbio.com](http://www.novusbio.com)



[technical@novusbio.com](mailto:technical@novusbio.com)

### Publications: 2

Protocols, Publications, Related Products, Reviews, Research Tools and Images at:  
[www.novusbio.com/NBP1-69080](http://www.novusbio.com/NBP1-69080)

Updated 2/21/2025 v.20.1

Earn rewards for product  
reviews and publications.

Submit a publication at [www.novusbio.com/publications](http://www.novusbio.com/publications)

Submit a review at [www.novusbio.com/reviews/destination/NBP1-69080](http://www.novusbio.com/reviews/destination/NBP1-69080)



**NBP1-69080**

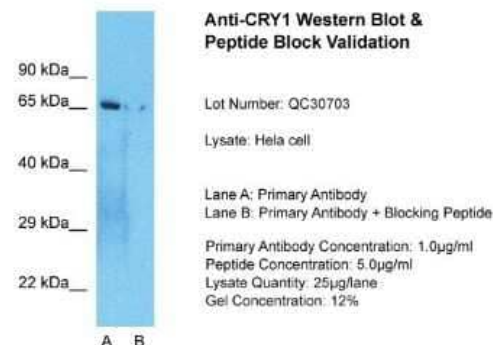
CRY1 Antibody - BSA Free

Product Information	
Unit Size	100 ul
Concentration	0.5 mg/ml
Storage	Store at 4C short term. Aliquot and store at -20C long term. Avoid freeze-thaw cycles.
Clonality	Polyclonal
Preservative	0.09% Sodium Azide
Isotype	IgG
Purity	Affinity purified
Buffer	PBS, 2% Sucrose
Target Molecular Weight	64 kDa
Product Description	
Description	The addition of 50% glycerol is optional for those storing this antibody at -20C and not aliquoting smaller units. However, please note that glycerol may interrupt some downstream antibody applications and should be added with caution.
Host	Rabbit
Gene ID	1407
Gene Symbol	CRY1
Species	Human, Amphibian
Reactivity Notes	Amphibian reactivity reported in a verified customer review.
Immunogen	Synthetic peptides corresponding to CRY1 (cryptochrome 1, photolyase-like). The peptide sequence was selected from the N terminal of CRY1 (NP_004066). Peptide sequence KRFQTLISKMEPLEIPVETITSEVIEKCTTPLSDDHDEKYGVPSLEELGF. The peptide sequence for this immunogen was taken from within the described region.
Product Application Details	
Applications	Western Blot, Simple Western, Immunohistochemistry, Immunohistochemistry-Frozen, Immunohistochemistry-Paraffin
Recommended Dilutions	Western Blot 1.0 ug/ml, Simple Western 1:50, Immunohistochemistry 1:10-1:500, Immunohistochemistry-Paraffin 5 ug/ml, Immunohistochemistry-Frozen Validated for Immunohistochemistry-Frozen from a verified customer review.
Application Notes	See <a href="#">Simple Western Antibody Database</a> for Simple Western validation: HeLa lysate at 0.5 mg/ml as sample; separated by size; antibody dilution of 1:50; observed molecular weight was 61 kDa; matrix was 12-230 kDa; detected by Chemiluminescence.

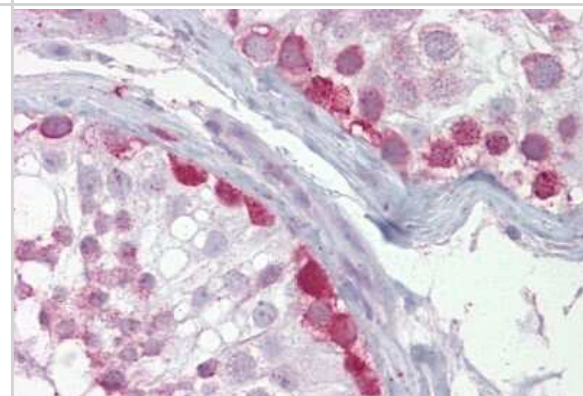


## Images

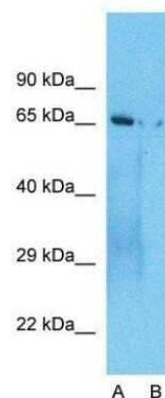
Western Blot: CRY1 Antibody [NBP1-69080] - Sample Tissue: Hela Whole cell, Lane A: Primary Antibody, Lane B: Primary Antibody + Blocking Peptide, Primary Antibody Concentration: 1ug/ml, Peptide Concentration: 5ug/ml, Lysate Quantity: 25ug/lane, Gel Concentration: 0.12%



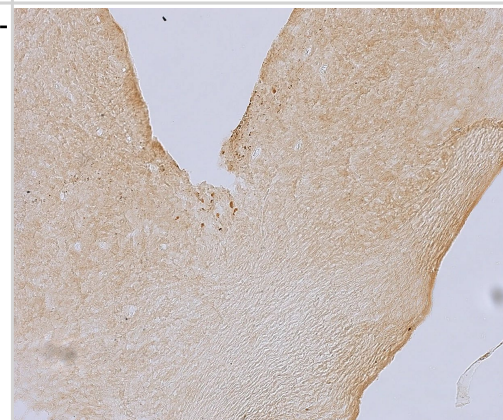
Immunohistochemistry-Paraffin: CRY1 Antibody [NBP1-69080] - Human testis tissue at an antibody concentration of 5ug/ml.



Western Blot: CRY1 Antibody [NBP1-69080] - Sample Tissue: Hela Whole cell. Lane A: Primary Antibody Lane B: Primary Antibody + Blocking.



Immunohistochemistry-Frozen: Rabbit Polyclonal CRY1 Antibody [NBP1-69080] - DAB staining in SCN of green treefrog, 10X. Primary antibody dilution - 1:1000. Image from a verified customer review.



## Publications

Bittman EL., , et Al. Anatomical Methods to Study the Suprachiasmatic Nucleus Methods Mol Biol 2023-12-27 [PMID: 35610428]

Lee YY, Cal-Kayitmazbatir S, Francey LJ et al. duper is a null mutation of Cryptochrome 1 in Syrian hamsters  
Proceedings of the National Academy of Sciences of the United States of America 2022-05-03 [PMID: 35471909]  
(IHC-Fr, WB, Syrian Hamster)





### **Novus Biologicals USA**

10730 E. Briarwood Avenue  
Centennial, CO 80112  
USA  
Phone: 303.730.1950  
Toll Free: 1.888.506.6887  
Fax: 303.730.1966  
nb-customerservice@bio-techne.com

### **Bio-Techne Canada**

21 Canmotor Ave  
Toronto, ON M8Z 4E6  
Canada  
Phone: 905.827.6400  
Toll Free: 855.668.8722  
Fax: 905.827.6402  
canada.inquires@bio-techne.com

### **Bio-Techne Ltd**

19 Barton Lane  
Abingdon Science Park  
Abingdon, OX14 3NB, United Kingdom  
Phone: (44) (0) 1235 529449  
Free Phone: 0800 37 34 15  
Fax: (44) (0) 1235 533420  
info.EMEA@bio-techne.com

### **General Contact Information**

www.novusbio.com  
Technical Support: nb-technical@bio-techne.com  
Orders: nb-customerservice@bio-techne.com  
General: novus@novusbio.com

### **Products Related to NBP1-69080**

---

NBP1-69080PEP	CRY1 Antibody Blocking Peptide
HAF008	Goat anti-Rabbit IgG Secondary Antibody [HRP]
NB7160	Goat anti-Rabbit IgG (H+L) Secondary Antibody [HRP]
NBP2-24891	Rabbit IgG Isotype Control

---

### **Limitations**

This product is for research use only and is not approved for use in humans or in clinical diagnosis. Primary Antibodies are guaranteed for 1 year from date of receipt.

For more information on our 100% guarantee, please visit [www.novusbio.com/guarantee](http://www.novusbio.com/guarantee)

Earn gift cards/discounts by submitting a review: [www.novusbio.com/reviews/submit/NBP1-69080](http://www.novusbio.com/reviews/submit/NBP1-69080)

Earn gift cards/discounts by submitting a publication using this product:  
[www.novusbio.com/publications](http://www.novusbio.com/publications)

