

Product Datasheet

PLD3/Phospholipase D3 Antibody - BSA Free NBP1-59921

Unit Size: 100 ul

Store at 4C short term. Aliquot and store at -20C long term. Avoid freeze-thaw cycles.

www.novusbio.com



technical@novusbio.com

Publications: 1

Protocols, Publications, Related Products, Reviews, Research Tools and Images at:
www.novusbio.com/NBP1-59921

Updated 2/21/2025 v.20.1

Earn rewards for product
reviews and publications.

Submit a publication at www.novusbio.com/publications

Submit a review at www.novusbio.com/reviews/destination/NBP1-59921



NBP1-59921**PLD3/Phospholipase D3 Antibody - BSA Free****Product Information**

Unit Size	100 ul
Concentration	0.5 mg/ml
Storage	Store at 4C short term. Aliquot and store at -20C long term. Avoid freeze-thaw cycles.
Clonality	Polyclonal
Preservative	0.09% Sodium Azide
Isotype	IgG
Purity	Affinity purified
Buffer	PBS, 2% Sucrose
Target Molecular Weight	55 kDa

Product Description

Description	The addition of 50% glycerol is optional for those storing this antibody at -20C and not aliquoting smaller units. However, please note that glycerol may interrupt some downstream antibody applications and should be added with caution.
Host	Rabbit
Gene ID	23646
Gene Symbol	PLD3
Species	Human
Immunogen	Synthetic peptides corresponding to PLD3/Phospholipase D3 The peptide sequence was selected from the N terminal of PLD3/Phospholipase D3. Peptide sequence WVLLVLILAVVGFGALMTQLFLWEYGDLHLFGPNQRPAPCYDPCEAVLVE. The peptide sequence for this immunogen was taken from within the described region.

Product Application Details

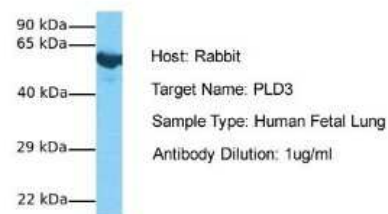
Applications	Western Blot
Recommended Dilutions	Western Blot 1.0 ug/ml



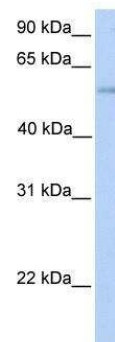
Images

Western Blot: PLD3/Phospholipase D3 Antibody [NBP1-59921] - Sample
Tissue: Human Fetal Lung Antibody Dilution: 1.0 ug/ml

PLD3

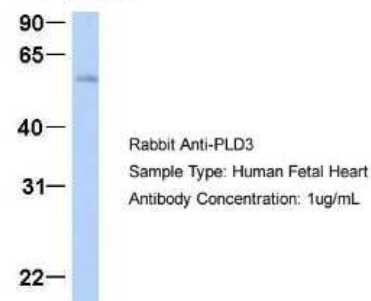


Western Blot: PLD3/Phospholipase D3 Antibody [NBP1-59921] - Human
Heart lysate, concentration 0.2-1 ug/ml.



Western Blot: PLD3/Phospholipase D3 Antibody [NBP1-59921] - Human
Fetal Heart, Antibody Dilution: 1.0 ug/ml.

PLD3



Publications

Walker LC, Waddell N, Ten Haaf A et al. Use of expression data and the CGEMS genome-wide breast cancer association study to identify genes that may modify risk in BRCA1/2 mutation carriers. Breast Cancer Res Treat 2008-11-01 [PMID: 18095154]



Novus Biologicals USA

10730 E. Briarwood Avenue
Centennial, CO 80112
USA
Phone: 303.730.1950
Toll Free: 1.888.506.6887
Fax: 303.730.1966
nb-customerservice@bio-techne.com

Bio-Techne Canada

21 Canmotor Ave
Toronto, ON M8Z 4E6
Canada
Phone: 905.827.6400
Toll Free: 855.668.8722
Fax: 905.827.6402
canada.inquires@bio-techne.com

Bio-Techne Ltd

19 Barton Lane
Abingdon Science Park
Abingdon, OX14 3NB, United Kingdom
Phone: (44) (0) 1235 529449
Free Phone: 0800 37 34 15
Fax: (44) (0) 1235 533420
info.EMEA@bio-techne.com

General Contact Information

www.novusbio.com
Technical Support: nb-technical@bio-techne.com
Orders: nb-customerservice@bio-techne.com
General: novus@novusbio.com

Products Related to NBP1-59921

HAF008	Goat anti-Rabbit IgG Secondary Antibody [HRP]
NB7160	Goat anti-Rabbit IgG (H+L) Secondary Antibody [HRP]
NBP2-24891	Rabbit IgG Isotype Control
H00023646-P01-10ug	Recombinant Human PLD3/Phospholipase D3 GST (N-Term) Protein

Limitations

This product is for research use only and is not approved for use in humans or in clinical diagnosis. Primary Antibodies are guaranteed for 1 year from date of receipt.

For more information on our 100% guarantee, please visit www.novusbio.com/guarantee

Earn gift cards/discounts by submitting a review: www.novusbio.com/reviews/submit/NBP1-59921

Earn gift cards/discounts by submitting a publication using this product:
www.novusbio.com/publications

