

# Product Datasheet

## Glucose Transporter GLUT6 Antibody - BSA Free NBP1-59891

Unit Size: 100ul

Store at 4C short term. Aliquot and store at -20C long term. Avoid freeze-thaw cycles.

[www.novusbio.com](http://www.novusbio.com)



[technical@novusbio.com](mailto:technical@novusbio.com)

Protocols, Publications, Related Products, Reviews, Research Tools and Images at:  
[www.novusbio.com/NBP1-59891](http://www.novusbio.com/NBP1-59891)

Updated 2/21/2025 v.20.1

Earn rewards for product  
reviews and publications.

Submit a publication at [www.novusbio.com/publications](http://www.novusbio.com/publications)

Submit a review at [www.novusbio.com/reviews/destination/NBP1-59891](http://www.novusbio.com/reviews/destination/NBP1-59891)



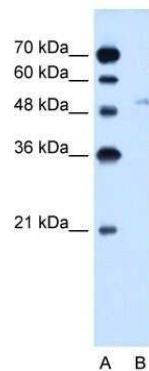
**NBP1-59891****Glucose Transporter GLUT6 Antibody - BSA Free**

| <b>Product Information</b>         |  |
|------------------------------------|--|
| <b>Unit Size</b>                   | 100ul  |
| <b>Concentration</b>               | 1 mg/ml  |
| <b>Storage</b>                     | Store at 4C short term. Aliquot and store at -20C long term. Avoid freeze-thaw cycles.   |
| <b>Clonality</b>                   | Polyclonal   |
| <b>Preservative</b>                | 0.09% Sodium Azide   |
| <b>Isotype</b>                     | IgG  |
| <b>Purity</b>                      | Protein A purified   |
| <b>Buffer</b>                      | PBS, 2% Sucrose  |
| <b>Product Description</b>         |  |
| <b>Description</b>                 | The addition of 50% glycerol is optional for those storing this antibody at -20C and not aliquoting smaller units. However, please note that glycerol may interrupt some downstream antibody applications and should be added with caution.  |
| <b>Host</b>                        | Rabbit   |
| <b>Gene ID</b>                     | 11182  |
| <b>Gene Symbol</b>                 | SLC2A6   |
| <b>Species</b>                     | Human  |
| <b>Immunogen</b>                   | Synthetic peptides corresponding to SLC2A6(solute carrier family 2 (facilitated glucose transporter), member 6) The peptide sequence was selected from the C terminal of SLC2A6. Peptide sequence AANLTLGLYIHFGPRPLSPNSTAGLESESWGDLAQPLAAPAGYLTLVPLL The peptide sequence for this immunogen was taken from within the described region. |
| <b>Product Application Details</b> |  |
| <b>Applications</b>                | Western Blot, Immunohistochemistry, Immunohistochemistry-Paraffin  |
| <b>Recommended Dilutions</b>       | Western Blot 1.0 ug/ml, Immunohistochemistry 1:10-1:500, Immunohistochemistry-Paraffin 1:10-1:500  |

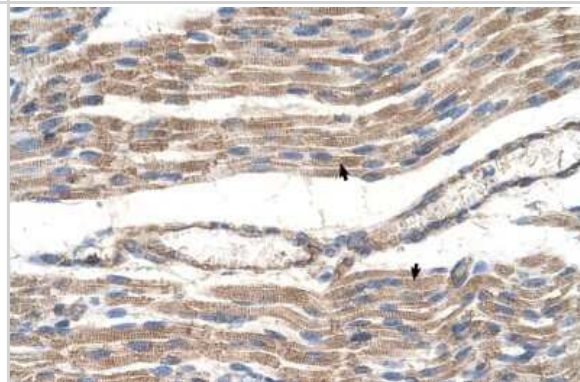


## Images

Western Blot: Glucose Transporter GLUT6 Antibody [NBP1-59891] - Jurkat cell lysate, Antibody Titration: 2.5ug/ml



Immunohistochemistry-Paraffin: Glucose Transporter GLUT6 Antibody [NBP1-59891] - Human Muscle Tissue, Skeletal muscle cells (Indicated with Arrows) 4-8ug/ml.





### **Novus Biologicals USA**

10730 E. Briarwood Avenue  
Centennial, CO 80112  
USA  
Phone: 303.730.1950  
Toll Free: 1.888.506.6887  
Fax: 303.730.1966  
nb-customerservice@bio-techne.com

### **Bio-Techne Canada**

21 Canmotor Ave  
Toronto, ON M8Z 4E6  
Canada  
Phone: 905.827.6400  
Toll Free: 855.668.8722  
Fax: 905.827.6402  
canada.inquires@bio-techne.com

### **Bio-Techne Ltd**

19 Barton Lane  
Abingdon Science Park  
Abingdon, OX14 3NB, United Kingdom  
Phone: (44) (0) 1235 529449  
Free Phone: 0800 37 34 15  
Fax: (44) (0) 1235 533420  
info.EMEA@bio-techne.com

### **General Contact Information**

www.novusbio.com  
Technical Support: nb-technical@bio-techne.com  
Orders: nb-customerservice@bio-techne.com  
General: novus@novusbio.com

### **Products Related to NBP1-59891**

---

|               |   |
|---------------|---|
| HAF008        | Goat anti-Rabbit IgG Secondary Antibody [HRP]         |
| NB7160        | Goat anti-Rabbit IgG (H+L) Secondary Antibody [HRP]   |
| NBP2-24891    | Rabbit IgG Isotype Control                            |
| NBP2-13327PEP | Glucose Transporter GLUT6 Recombinant Protein Antigen |

---

### **Limitations**

This product is for research use only and is not approved for use in humans or in clinical diagnosis. Primary Antibodies are guaranteed for 1 year from date of receipt.

For more information on our 100% guarantee, please visit [www.novusbio.com/guarantee](http://www.novusbio.com/guarantee)

Earn gift cards/discounts by submitting a review: [www.novusbio.com/reviews/submit/NBP1-59891](http://www.novusbio.com/reviews/submit/NBP1-59891)

Earn gift cards/discounts by submitting a publication using this product:  
[www.novusbio.com/publications](http://www.novusbio.com/publications)

