

Product Datasheet

SLC1A5 Antibody - BSA Free

NBP1-59732

Unit Size: 100ul

Store at 4C short term. Aliquot and store at -20C long term. Avoid freeze-thaw cycles.

www.novusbio.com



technical@novusbio.com

Publications: 1

Protocols, Publications, Related Products, Reviews, Research Tools and Images at:
www.novusbio.com/NBP1-59732

Updated 2/21/2025 v.20.1

Earn rewards for product
reviews and publications.

Submit a publication at www.novusbio.com/publications

Submit a review at www.novusbio.com/reviews/destination/NBP1-59732



NBP1-59732

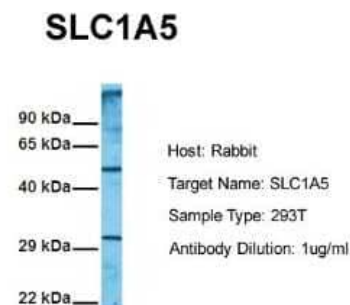
SLC1A5 Antibody - BSA Free

Product Information	
Unit Size	100ul
Concentration	1 mg/ml
Storage	Store at 4C short term. Aliquot and store at -20C long term. Avoid freeze-thaw cycles.
Clonality	Polyclonal
Preservative	0.09% Sodium Azide
Isotype	IgG
Purity	Protein A purified
Buffer	PBS, 2% Sucrose
Target Molecular Weight	60 kDa
Product Description	
Description	The addition of 50% glycerol is optional for those storing this antibody at -20C and not aliquoting smaller units. However, please note that glycerol may interrupt some downstream antibody applications and should be added with caution.
Host	Rabbit
Gene ID	6510
Gene Symbol	SLC1A5
Species	Human, Bovine
Immunogen	Synthetic peptides corresponding to SLC1A5(solute carrier family 1 (neutral amino acid transporter), member 5) The peptide sequence was selected from the middle region of SLC1A5 (NP_005619). Peptide sequence FGVALRKLGPGEGLIRFFNSFNEATMVLVSWIMWYAPVGIMFLVAGKIV The peptide sequence for this immunogen was taken from within the described region.
Product Application Details	
Applications	Western Blot, Immunohistochemistry, Immunohistochemistry-Paraffin
Recommended Dilutions	Western Blot 1.0 ug/ml, Immunohistochemistry 4-8 ug/ml, Immunohistochemistry-Paraffin 4-8 ug/ml

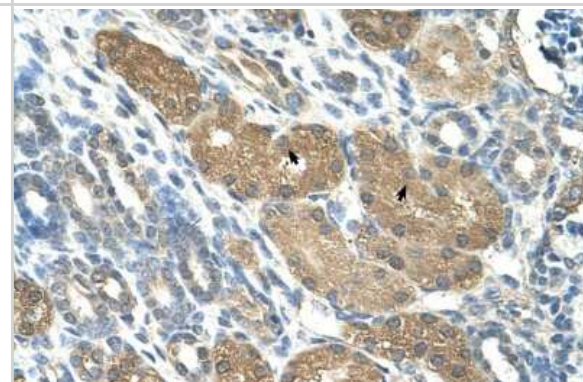


Images

Western Blot: SLC1A5 Antibody [NBP1-59732] - Sample Tissue: Human 293T Antibody Dilution: 1.0 ug/ml



Immunohistochemistry: SLC1A5 Antibody [NBP1-59732] - Paraffin Embedded Tissue: Human Kidney Cellular Data: Epithelial cells of renal tubule Antibody Concentration: 4.0 - 8.0 ug/ml Magnification: 400X



Western Blot: SLC1A5 Antibody [NBP1-59732] - Jurkat cell lysate, Antibody Titration: 2.5ug/ml



Publications

Palani S, Miner MWG, Virta J et al. Exploiting Glutamine Consumption in Atherosclerotic Lesions by Positron Emission Tomography Tracer (2S,4R)-4-(18)F-Fluoroglutamine Frontiers in Immunology 2022-01-25 [PMID: 35145523] (Immunohistochemistry, Immunohistochemistry-Frozen, In vivo assay)



Novus Biologicals USA

10730 E. Briarwood Avenue
Centennial, CO 80112
USA
Phone: 303.730.1950
Toll Free: 1.888.506.6887
Fax: 303.730.1966
nb-customerservice@bio-techne.com

Bio-Techne Canada

21 Canmotor Ave
Toronto, ON M8Z 4E6
Canada
Phone: 905.827.6400
Toll Free: 855.668.8722
Fax: 905.827.6402
canada.inquires@bio-techne.com

Bio-Techne Ltd

19 Barton Lane
Abingdon Science Park
Abingdon, OX14 3NB, United Kingdom
Phone: (44) (0) 1235 529449
Free Phone: 0800 37 34 15
Fax: (44) (0) 1235 533420
info.EMEA@bio-techne.com

General Contact Information

www.novusbio.com
Technical Support: nb-technical@bio-techne.com
Orders: nb-customerservice@bio-techne.com
General: novus@novusbio.com

Products Related to NBP1-59732

HAF008	Goat anti-Rabbit IgG Secondary Antibody [HRP]
NB7160	Goat anti-Rabbit IgG (H+L) Secondary Antibody [HRP]
NBP2-24891	Rabbit IgG Isotype Control
NBP1-89327PEP	SLC1A5 Recombinant Protein Antigen

Limitations

This product is for research use only and is not approved for use in humans or in clinical diagnosis. Primary Antibodies are guaranteed for 1 year from date of receipt.

For more information on our 100% guarantee, please visit www.novusbio.com/guarantee

Earn gift cards/discounts by submitting a review: www.novusbio.com/reviews/submit/NBP1-59732

Earn gift cards/discounts by submitting a publication using this product:
www.novusbio.com/publications

