

# Product Datasheet

## Claudin-8 Antibody - BSA Free

### NBP1-59157

Unit Size: 100 ul

Store at 4C short term. Aliquot and store at -20C long term. Avoid freeze-thaw cycles.

[www.novusbio.com](http://www.novusbio.com)



[technical@novusbio.com](mailto:technical@novusbio.com)

#### Publications: 4

Protocols, Publications, Related Products, Reviews, Research Tools and Images at:  
[www.novusbio.com/NBP1-59157](http://www.novusbio.com/NBP1-59157)

Updated 2/21/2025 v.20.1

Earn rewards for product  
reviews and publications.

Submit a publication at [www.novusbio.com/publications](http://www.novusbio.com/publications)

Submit a review at [www.novusbio.com/reviews/destination/NBP1-59157](http://www.novusbio.com/reviews/destination/NBP1-59157)



**NBP1-59157**

Claudin-8 Antibody - BSA Free

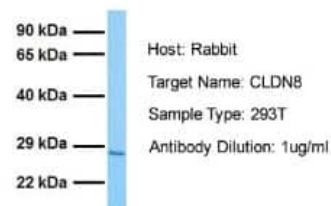
Product Information	
Unit Size	100 ul
Concentration	1 mg/ml
Storage	Store at 4C short term. Aliquot and store at -20C long term. Avoid freeze-thaw cycles.
Clonality	Polyclonal
Preservative	0.09% Sodium Azide
Isotype	IgG
Purity	Protein A purified
Buffer	PBS, 2% Sucrose
Product Description	
Description	The addition of 50% glycerol is optional for those storing this antibody at -20C and not aliquoting smaller units. However, please note that glycerol may interrupt some downstream antibody applications and should be added with caution.
Host	Rabbit
Gene ID	9073
Gene Symbol	CLDN8
Species	Human, Porcine
Reactivity Notes	Use in Porcine reported in scientific literature (PMID: 35336858).
Immunogen	Synthetic peptides corresponding to CLDN8 (claudin 8) The peptide sequence was selected from the C terminal of CLDN8. Peptide sequence IVGGALFCCVFCCNEKSSSYRYSIPSHRTTQKSYHTGKKSPSVYSRSQYV. The peptide sequence for this immunogen was taken from within the described region.
Product Application Details	
Applications	Western Blot, Immunohistochemistry, Immunohistochemistry-Paraffin
Recommended Dilutions	Western Blot 1.0 ug/ml, Immunohistochemistry 1:10-1:500, Immunohistochemistry-Paraffin 1:10-1:500



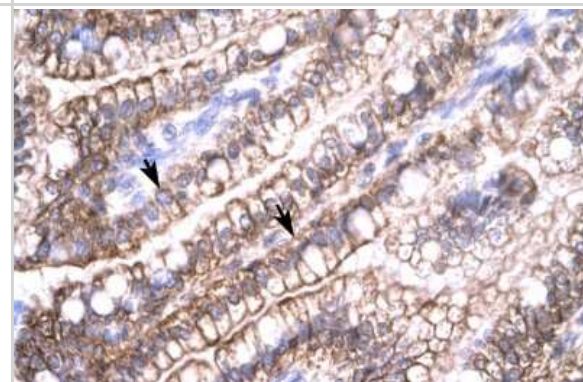
## Images

Western Blot: Claudin-8 Antibody [NBP1-59157] - Sample Tissue:  
Human 293T Antibody Dilution: 1.0 ug/ml

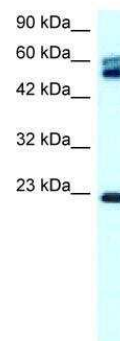
### CLDN8



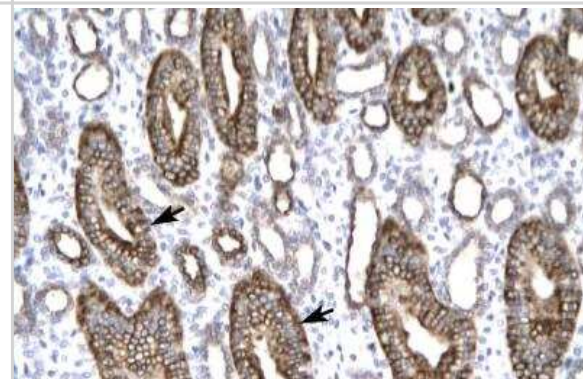
Immunohistochemistry: Claudin-8 Antibody [NBP1-59157] - Human  
Intestine



Western Blot: Claudin-8 Antibody [NBP1-59157] - Claudin 8 Antibody  
[NBP1-59157] - HepG2 cell lysate, Antibody Titration: 0.5-1.0ug/ml



Immunohistochemistry-Paraffin: Claudin-8 Antibody [NBP1-59157] -  
Claudin 8 Antibody [NBP1-59157] - Human kidney Tissue, antibody  
concentration 4-8ug/ml. Cells with positive label: renal corpuscle cells  
(indicated with arrows) 400X magnification.



## Publications

Weifeng Sun, Weixin Wu, Xinyu Fang, Xinna Ge, Yongning Zhang, Jun Han, Xin Guo, Lei Zhou, Hanchun Yang  
Disruption of pulmonary microvascular endothelial barrier by dysregulated claudin-8 and claudin-4: uncovered mechanisms in porcine reproductive and respiratory syndrome virus infection Cellular and Molecular Life Sciences: CMLS 2024-05-28 [PMID: 38806818]

Sun Z, Chen X, Liu J et al. PRRSV-induced inflammation in pulmonary intravascular macrophages (PIMs) and pulmonary alveolar macrophages (PAMs) contributes to endothelial barrier function injury Veterinary microbiology 2023-04-04 [PMID: 37068404]

Sun W, Wu W, Jiang N et al. Highly Pathogenic PRRSV-Infected Alveolar Macrophages Impair the Function of Pulmonary Microvascular Endothelial Cells Viruses 2022-03-26 [PMID: 35336858]

Wu RL, Vazquez-Roque MI, Carlson P et al. Gluten-induced symptoms in diarrhea-predominant irritable bowel syndrome are associated with increased myosin light chain kinase activity and claudin-15 expression. Lab. Invest. 2016-11-21 [PMID: 27869798]





### **Novus Biologicals USA**

10730 E. Briarwood Avenue  
Centennial, CO 80112  
USA  
Phone: 303.730.1950  
Toll Free: 1.888.506.6887  
Fax: 303.730.1966  
nb-customerservice@bio-techne.com

### **Bio-Techne Canada**

21 Canmotor Ave  
Toronto, ON M8Z 4E6  
Canada  
Phone: 905.827.6400  
Toll Free: 855.668.8722  
Fax: 905.827.6402  
canada.inquires@bio-techne.com

### **Bio-Techne Ltd**

19 Barton Lane  
Abingdon Science Park  
Abingdon, OX14 3NB, United Kingdom  
Phone: (44) (0) 1235 529449  
Free Phone: 0800 37 34 15  
Fax: (44) (0) 1235 533420  
info.EMEA@bio-techne.com

### **General Contact Information**

[www.novusbio.com](http://www.novusbio.com)  
Technical Support: nb-technical@bio-techne.com  
Orders: nb-customerservice@bio-techne.com  
General: novus@novusbio.com

### **Products Related to NBP1-59157**

---

HAF008	Goat anti-Rabbit IgG Secondary Antibody [HRP]
NB7160	Goat anti-Rabbit IgG (H+L) Secondary Antibody [HRP]
NBP2-24891	Rabbit IgG Isotype Control
H00009073-P01-2ug	Recombinant Human Claudin-8 GST (N-Term) Protein

---

### **Limitations**

This product is for research use only and is not approved for use in humans or in clinical diagnosis. Primary Antibodies are guaranteed for 1 year from date of receipt.

For more information on our 100% guarantee, please visit [www.novusbio.com/guarantee](http://www.novusbio.com/guarantee)

Earn gift cards/discounts by submitting a review: [www.novusbio.com/reviews/submit/NBP1-59157](http://www.novusbio.com/reviews/submit/NBP1-59157)

Earn gift cards/discounts by submitting a publication using this product:  
[www.novusbio.com/publications](http://www.novusbio.com/publications)

