

Product Datasheet

GEM Antibody NBP1-58906

Unit Size: 100 ul

Store at 4C short term. Aliquot and store at -20C long term. Avoid freeze-thaw cycles.

www.novusbio.com



technical@novusbio.com

Reviews: 1 Publications: 2

Protocols, Publications, Related Products, Reviews, Research Tools and Images at:
www.novusbio.com/NBP1-58906

Updated 7/13/2023 v.20.1

**Earn rewards for product
reviews and publications.**

Submit a publication at www.novusbio.com/publications

Submit a review at www.novusbio.com/reviews/destination/NBP1-58906



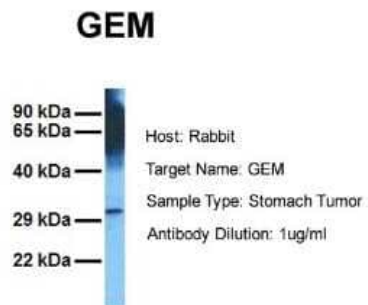
NBP1-58906

GEM Antibody

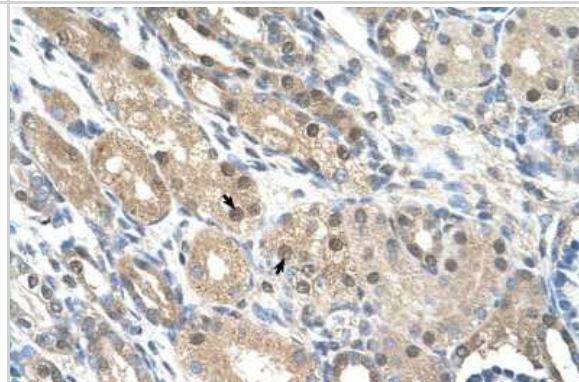
Product Information	
Unit Size	100 ul
Concentration	1 mg/ml
Storage	Store at 4C short term. Aliquot and store at -20C long term. Avoid freeze-thaw cycles.
Clonality	Polyclonal
Preservative	0.09% Sodium Azide
Isotype	IgG
Purity	Protein A purified
Buffer	PBS, 2% Sucrose
Target Molecular Weight	33 kDa
Product Description	
Description	The addition of 50% glycerol is optional for those storing this antibody at -20C and not aliquoting smaller units. However, please note that glycerol may interrupt some downstream antibody applications and should be added with caution.
Host	Rabbit
Gene ID	2669
Gene Symbol	GEM
Species	Human, Mouse
Reactivity Notes	Mouse reactivity reported in scientific literature (PMID: 24809506).
Immunogen	Synthetic peptides corresponding to GEM(GTP binding protein overexpressed in skeletal muscle) The peptide sequence was selected from the C terminal of GEM (NP_005252). Peptide sequence ETSAAVQHNVKELFEGIVRQVRLRRDSKEKNERRLAYQKRKESMPRKARRFW The peptide sequence for this immunogen was taken from within the described region.
Product Application Details	
Applications	Western Blot, Immunocytochemistry/Immunofluorescence, Immunohistochemistry, Immunohistochemistry-Frozen, Immunohistochemistry-Paraffin
Recommended Dilutions	Western Blot 1.0 ug/ml, Immunohistochemistry 1:10 - 1:500, Immunocytochemistry/Immunofluorescence, Immunohistochemistry-Paraffin 4 - 8 ug/mL, Immunohistochemistry-Frozen
Application Notes	Use in Immunocytochemistry/immunofluorescence and Immunohistochemistry-Frozen reported in scientific literature (PMID 24809506).

Images

Western Blot: GEM Antibody [NBP1-58906] - Human Stomach Tumor cell lysate. Antibody at 1.0 ug/mL.



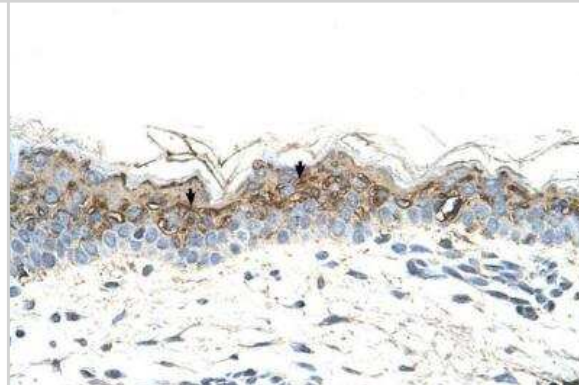
Immunohistochemistry: GEM Antibody [NBP1-58906] - Human kidney tissue section. Magnification: 400X.



Western Blot: GEM Antibody [NBP1-58906] - HepG2 cell lysate. Antibody at 2.5 ug/mL.



Immunohistochemistry-Paraffin: GEM Antibody [NBP1-58906] - Human Skin Cellular Data: Squamous epithelial tissue section. Magnification: 400X.



Publications

Laurberg Jens Reumert, Jensen Jorgen Bjerggaard, Schepeler Troels et al. High expression of GEM and EDNRA is associated with metastasis and poor outcome in patients with advanced bladder cancer. BMC Cancer. 2014-08-30 [PMID: 25175477] (WB)

Scamps F, Sangari S, Bowerman M et al. Nerve injury induces a Gem-GTPase-dependent downregulation of P/Q-type Ca(2+) channels contributing to neurite plasticity in dorsal root ganglion neurons. Pflugers Arch. 2014-05-09 [PMID: 24809506] (ICC/IF, IHC-Fr, WB, Mouse)





Novus Biologicals USA

10730 E. Briarwood Avenue
Centennial, CO 80112
USA
Phone: 303.730.1950
Toll Free: 1.888.506.6887
Fax: 303.730.1966
nb-customerservice@bio-techne.com

Bio-Techne Canada

21 Canmotor Ave
Toronto, ON M8Z 4E6
Canada
Phone: 905.827.6400
Toll Free: 855.668.8722
Fax: 905.827.6402
canada.inquires@bio-techne.com

Bio-Techne Ltd

19 Barton Lane
Abingdon Science Park
Abingdon, OX14 3NB, United Kingdom
Phone: (44) (0) 1235 529449
Free Phone: 0800 37 34 15
Fax: (44) (0) 1235 533420
info.EMEA@bio-techne.com

General Contact Information

www.novusbio.com
Technical Support: nb-technical@bio-techne.com
Orders: nb-customerservice@bio-techne.com
General: novus@novusbio.com

Products Related to NBP1-58906

HAF008	Goat anti-Rabbit IgG Secondary Antibody [HRP]
NB7160	Goat anti-Rabbit IgG (H+L) Secondary Antibody [HRP]
NBP2-24891	Rabbit IgG Isotype Control
H00002669-Q01-10ug	Recombinant Human GEM GST (N-Term) Protein

Limitations

This product is for research use only and is not approved for use in humans or in clinical diagnosis. Primary Antibodies are guaranteed for 1 year from date of receipt.

For more information on our 100% guarantee, please visit www.novusbio.com/guarantee

Earn gift cards/discounts by submitting a review: www.novusbio.com/reviews/submit/NBP1-58906

Earn gift cards/discounts by submitting a publication using this product:
www.novusbio.com/publications

