

# Product Datasheet

## Dopa Decarboxylase/DDC Antibody - BSA Free NBP1-56918

Unit Size: 100 ul

Store at 4C short term. Aliquot and store at -20C long term. Avoid freeze-thaw cycles.

[www.novusbio.com](http://www.novusbio.com)



[technical@novusbio.com](mailto:technical@novusbio.com)

### Publications: 5

Protocols, Publications, Related Products, Reviews, Research Tools and Images at:  
[www.novusbio.com/NBP1-56918](http://www.novusbio.com/NBP1-56918)

Updated 2/21/2025 v.20.1

Earn rewards for product  
reviews and publications.

Submit a publication at [www.novusbio.com/publications](http://www.novusbio.com/publications)

Submit a review at [www.novusbio.com/reviews/destination/NBP1-56918](http://www.novusbio.com/reviews/destination/NBP1-56918)



**NBP1-56918**

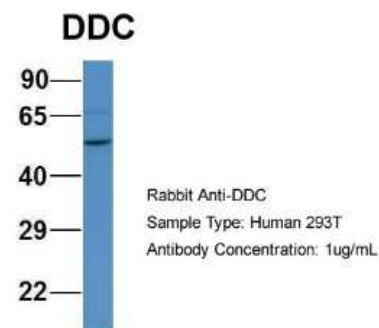
Dopa Decarboxylase/DDC Antibody - BSA Free

Product Information	
Unit Size	100 ul
Concentration	1 mg/ml
Storage	Store at 4C short term. Aliquot and store at -20C long term. Avoid freeze-thaw cycles.
Clonality	Polyclonal
Preservative	0.09% Sodium Azide
Isotype	IgG
Purity	Protein A purified
Buffer	PBS, 2% Sucrose
Target Molecular Weight	53 kDa
Product Description	
Description	The addition of 50% glycerol is optional for those storing this antibody at -20C and not aliquoting smaller units. However, please note that glycerol may interrupt some downstream antibody applications and should be added with caution.
Host	Rabbit
Gene ID	1644
Gene Symbol	DDC
Species	Human, Mouse
Reactivity Notes	Mouse reactivity reported in scientific literature (PMID: 29789702).
Immunogen	Synthetic peptides corresponding to DDC (dopa decarboxylase, aromatic L-amino acid decarboxylase). The peptide sequence was selected from the N terminal of DDC (NP_000781). Peptide sequence EFRRRGKEMVDYVANYMEGIEGRQVYPDVEPGYLRPLIPAAAPQEPDTFE. The peptide sequence for this immunogen was taken from within the described region.
Product Application Details	
Applications	Western Blot, Immunohistochemistry, Immunohistochemistry-Paraffin
Recommended Dilutions	Western Blot 1.0 ug/ml, Immunohistochemistry 1:10-1:500, Immunohistochemistry-Paraffin 4-8 ug/ml

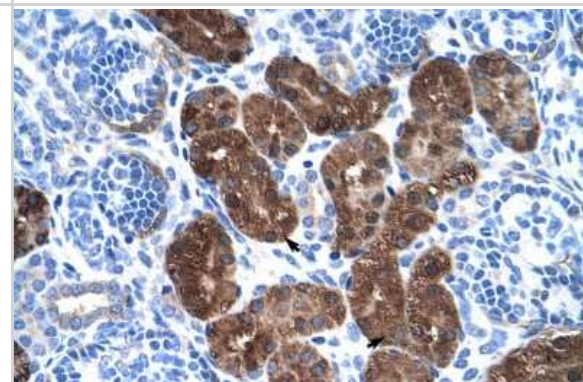


## Images

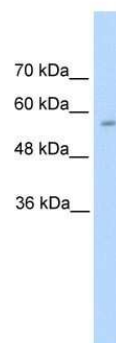
Western Blot: Dopa Decarboxylase/DDC Antibody [NBP1-56918] -  
Recommened Titration: 1 ug/ml Positive Control: Human 293T cell  
lysate



Immunohistochemistry-Paraffin: Dopa Decarboxylase/DDC Antibody  
[NBP1-56918] - Human kidney Tissue, antibody concentration 4-8ug/ml.  
Cells with positive label: renal corpuscle cells (indicated with arrows)  
400X magnification.



Western Blot: Dopa Decarboxylase/DDC Antibody [NBP1-56918] -  
HepG2 cell lysate, Antibody Titration: 5.0ug/ml



## Publications

Iannielli A, Ugolini GS, Cordiglieri C, et al. Reconstitution of the Human Nigro-striatal Pathway on-a-Chip Reveals OPA1-Dependent Mitochondrial Defects and Loss of Dopaminergic Synapses Cell Rep 2019-12-24 [PMID: 31875567] (IF/IHC)

Koblinger k, Jean-Xavier C, Sharma S et al. Optogenetic Activation of A11 Region Increases Motor Activity. Front Neural Circuits. 2018-10-11 [PMID: 30364230] (IF/IHC, Mouse)

Sharma S, Kim LH, Mayr KA et al. Parallel descending dopaminergic connectivity of A13 cells to the brainstem locomotor centers Sci Rep 2018-05-22 [PMID: 29789702] (IF/IHC, Mouse)

Koblinger Kathrin, Fuzesi Tamas, Ejdrygiewicz Jillian et al. Characterization of A11 neurons projecting to the spinal cord of mice. PLoS One. 2014-10-24 [PMID: 25343491] (Mouse)

Ma,JZ. Hum. Mol. Genet. 14 (12), 1691-1698. 2005-01-01



### **Novus Biologicals USA**

10730 E. Briarwood Avenue  
Centennial, CO 80112  
USA  
Phone: 303.730.1950  
Toll Free: 1.888.506.6887  
Fax: 303.730.1966  
nb-customerservice@bio-techne.com

### **Bio-Techne Canada**

21 Canmotor Ave  
Toronto, ON M8Z 4E6  
Canada  
Phone: 905.827.6400  
Toll Free: 855.668.8722  
Fax: 905.827.6402  
canada.inquires@bio-techne.com

### **Bio-Techne Ltd**

19 Barton Lane  
Abingdon Science Park  
Abingdon, OX14 3NB, United Kingdom  
Phone: (44) (0) 1235 529449  
Free Phone: 0800 37 34 15  
Fax: (44) (0) 1235 533420  
info.EMEA@bio-techne.com

### **General Contact Information**

www.novusbio.com  
Technical Support: nb-technical@bio-  
techne.com  
Orders: nb-customerservice@bio-techne.com  
General: novus@novusbio.com

Error: Subreport could not be shown.

---

### **Limitations**

This product is for research use only and is not approved for use in humans or in clinical diagnosis. Primary Antibodies are guaranteed for 1 year from date of receipt.

For more information on our 100% guarantee, please visit [www.novusbio.com/guarantee](http://www.novusbio.com/guarantee)

Earn gift cards/discounts by submitting a review: [www.novusbio.com/reviews/submit/NBP1-56918](http://www.novusbio.com/reviews/submit/NBP1-56918)

Earn gift cards/discounts by submitting a publication using this product:  
[www.novusbio.com/publications](http://www.novusbio.com/publications)

