

# Product Datasheet

## Lactate Dehydrogenase B Antibody - BSA Free NBP1-55415

Unit Size: 100 ul

Store at 4C short term. Aliquot and store at -20C long term. Avoid freeze-thaw cycles.

[www.novusbio.com](http://www.novusbio.com)



[technical@novusbio.com](mailto:technical@novusbio.com)

### Publications: 1

Protocols, Publications, Related Products, Reviews, Research Tools and Images at:  
[www.novusbio.com/NBP1-55415](http://www.novusbio.com/NBP1-55415)

Updated 2/21/2025 v.20.1

Earn rewards for product  
reviews and publications.

Submit a publication at [www.novusbio.com/publications](http://www.novusbio.com/publications)

Submit a review at [www.novusbio.com/reviews/destination/NBP1-55415](http://www.novusbio.com/reviews/destination/NBP1-55415)



**NBP1-55415****Lactate Dehydrogenase B Antibody - BSA Free****Product Information**

<b>Unit Size</b>	100 ul
<b>Concentration</b>	0.5 mg/ml
<b>Storage</b>	Store at 4C short term. Aliquot and store at -20C long term. Avoid freeze-thaw cycles.
<b>Clonality</b>	Polyclonal
<b>Preservative</b>	0.09% Sodium Azide
<b>Isotype</b>	IgG
<b>Purity</b>	Affinity purified
<b>Buffer</b>	PBS, 2% Sucrose
<b>Target Molecular Weight</b>	37 kDa

**Product Description**

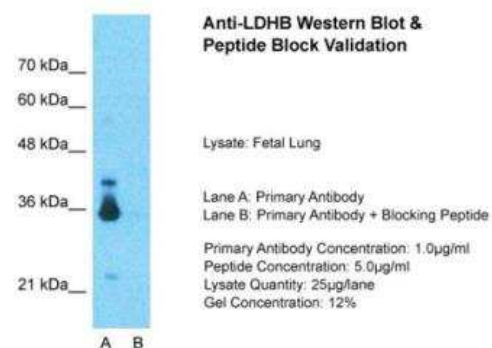
<b>Description</b>	The addition of 50% glycerol is optional for those storing this antibody at -20C and not aliquoting smaller units. However, please note that glycerol may interrupt some downstream antibody applications and should be added with caution.
<b>Host</b>	Rabbit
<b>Gene ID</b>	3945
<b>Gene Symbol</b>	LDHB
<b>Species</b>	Human
<b>Immunogen</b>	The immunogen is a synthetic peptide directed towards the C-terminal region of Human Lactate Dehydrogenase B. Peptide Sequence MYGIENEVFLSLPCILNARGLTSVINQKLKDDEVAQLKKSADTLWDIQKD. The peptide sequence for this immunogen was taken from within the described region.

**Product Application Details**

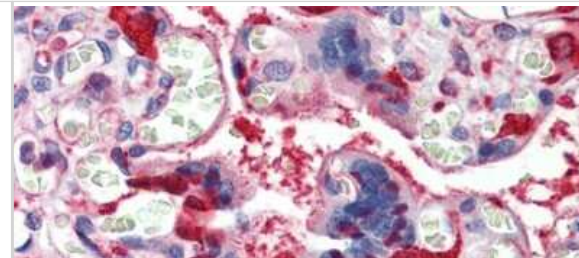
<b>Applications</b>	Western Blot, Immunohistochemistry-Paraffin, Immunocytochemistry/Immunofluorescence, Immunohistochemistry, Immunoprecipitation
<b>Recommended Dilutions</b>	Western Blot 1.0 ug/ml, Immunohistochemistry, Immunocytochemistry/Immunofluorescence 1:10-1:2000, Immunoprecipitation, Immunohistochemistry-Paraffin

**Images**

Western Blot: Lactate Dehydrogenase B Antibody [NBP1-55415] -  
Sample Tissue: Human Fetal Lung, Lane A: Primary Antibody, Lane B:  
Primary Antibody + Blocking Peptide, Primary Antibody Concentration:  
1ug/ml, Peptide Concentration: 5ug/ml, Lysate Quantity: 25ug/lane/lane,  
Gel Concentration: 0.12



Immunohistochemistry: Lactate Dehydrogenase B Antibody [NBP1-55415] - Human Placenta Antibody Concentration: 5 ug/ml.



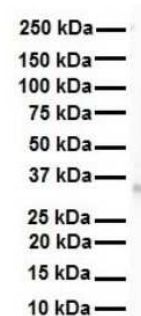
Western Blot: Lactate Dehydrogenase B Antibody [NBP1-55415] - Human pancreatic cancer cell line MiaPaca-2 and Panc-1, concentration 1 ug/ml.



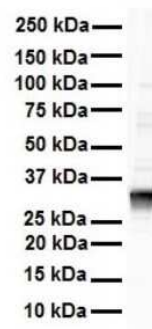
Western Blot: Lactate Dehydrogenase B Antibody [NBP1-55415] - 721\_B Whole Cell, concentration 1 ug/ml.



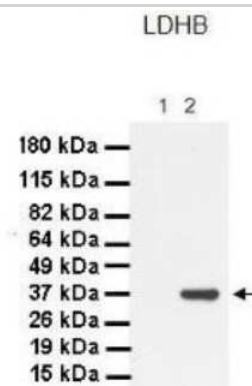
Western Blot: Lactate Dehydrogenase B Antibody [NBP1-55415] - Antibody Titration: 1 ug/ml Human 721\_B.



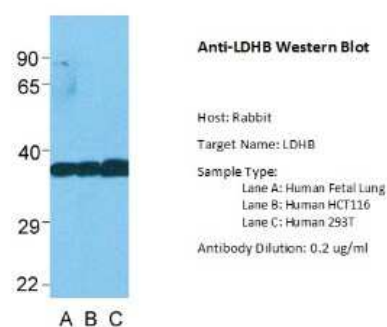
Western Blot: Lactate Dehydrogenase B Antibody [NBP1-55415] -  
Antibody Titration: 1 ug/ml Human Raji.



Western Blot: Lactate Dehydrogenase B Antibody [NBP1-55415] -  
Lanes: 1. 30 ug MiaPaca-2 cell lysate 2. 30 ug Panc-1 cell lysate  
Primary, Antibody Dilution: 1 : 1000 Secondary Antibody: Goat anti-  
Rabbit HRP Secondary, Antibody Dilution: 1 : 4000 Gene name: LDHB.



Western Blot: Lactate Dehydrogenase B Antibody [NBP1-55415] - Lane  
A: Human Fetal Lung Lane B: Human HCT116 Lane C: Human 293T,  
Antibody Dilution: 0.2 ug/ml.



## Publications

Schild M, Ruhs A, Beiter T et al. Basal and exercise induced label-free quantitative protein profiling of m. vastus lateralis in trained and untrained individuals J Proteomics 2015-04-06 [PMID: 25857276] (WB, Human)



### **Novus Biologicals USA**

10730 E. Briarwood Avenue  
Centennial, CO 80112  
USA  
Phone: 303.730.1950  
Toll Free: 1.888.506.6887  
Fax: 303.730.1966  
nb-customerservice@bio-techne.com

### **Bio-Techne Canada**

21 Canmotor Ave  
Toronto, ON M8Z 4E6  
Canada  
Phone: 905.827.6400  
Toll Free: 855.668.8722  
Fax: 905.827.6402  
canada.inquires@bio-techne.com

### **Bio-Techne Ltd**

19 Barton Lane  
Abingdon Science Park  
Abingdon, OX14 3NB, United Kingdom  
Phone: (44) (0) 1235 529449  
Free Phone: 0800 37 34 15  
Fax: (44) (0) 1235 533420  
info.EMEA@bio-techne.com

### **General Contact Information**

www.novusbio.com  
Technical Support: nb-technical@bio-  
techne.com  
Orders: nb-customerservice@bio-techne.com  
General: novus@novusbio.com

### **Products Related to NBP1-55415**

---

HAF008	Goat anti-Rabbit IgG Secondary Antibody [HRP]
NB7160	Goat anti-Rabbit IgG (H+L) Secondary Antibody [HRP]
NBP2-24891	Rabbit IgG Isotype Control
NBP2-38131PEP	Lactate Dehydrogenase B Recombinant Protein Antigen

---

### **Limitations**

This product is for research use only and is not approved for use in humans or in clinical diagnosis. Primary Antibodies are guaranteed for 1 year from date of receipt.

For more information on our 100% guarantee, please visit [www.novusbio.com/guarantee](http://www.novusbio.com/guarantee)

Earn gift cards/discounts by submitting a review: [www.novusbio.com/reviews/submit/NBP1-55415](http://www.novusbio.com/reviews/submit/NBP1-55415)

Earn gift cards/discounts by submitting a publication using this product:  
[www.novusbio.com/publications](http://www.novusbio.com/publications)

