

# Product Datasheet

## alpha Tubulin 4a Antibody

### NBP1-53162

Unit Size: 100 ul

Store at -20C. Avoid freeze-thaw cycles.

[www.novusbio.com](http://www.novusbio.com)



[technical@novusbio.com](mailto:technical@novusbio.com)

#### Publications: 1

Protocols, Publications, Related Products, Reviews, Research Tools and Images at:  
[www.novusbio.com/NBP1-53162](http://www.novusbio.com/NBP1-53162)

Updated 6/27/2022 v.20.1

Earn rewards for product  
reviews and publications.

Submit a publication at [www.novusbio.com/publications](http://www.novusbio.com/publications)

Submit a review at [www.novusbio.com/reviews/destination/NBP1-53162](http://www.novusbio.com/reviews/destination/NBP1-53162)



**NBP1-53162**

alpha Tubulin 4a Antibody

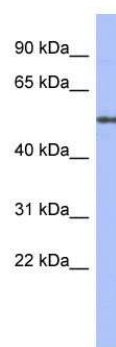
Product Information	
Unit Size	100 ul
Concentration	Please see the vial label for concentration. If unlisted please contact technical services.
Storage	Store at -20C. Avoid freeze-thaw cycles.
Clonality	Polyclonal
Preservative	0.09% Sodium Azide
Isotype	IgG
Purity	Immunogen affinity purified
Buffer	PBS & 2% Sucrose.
Target Molecular Weight	50 kDa

Product Description	
Host	Rabbit
Gene ID	7277
Gene Symbol	TUBA4A
Species	Human
Immunogen	Synthetic peptide directed towards the middle region of human alpha Tubulin 4A (NP_005991). Peptide sequence GGTGSGFTSLLMERLSVDYGKKSLEFSIYPAPQVSTAVVEPYNSILTTH. The peptide sequence for this immunogen was taken from within the described region.
Notes	The addition of 50% glycerol is optional for those storing this antibody at -20C and not aliquoting smaller units. However, please note that glycerol may interrupt some downstream antibody applications and should be added with caution.

Product Application Details	
Applications	Western Blot
Recommended Dilutions	Western Blot 1.0 ug/ml
Application Notes	This is a rabbit polyclonal antibody against alpha Tubulin 4A and was validated on Western blot.

**Images**

Western Blot: alpha Tubulin 4a Antibody [NBP1-53162] - Human Small Intestine, concentration 0.2-1 ug/ml.



## Publications

Maraldi T, Beretti F, Anselmi L et al. Influence of selenium on the emergence of neuro tubule defects in a neuron-like cell line and its implications for amyotrophic lateral sclerosis NeuroToxicology 2019-10-01 [PMID: 31585128] (WB, Human)



### Novus Biologicals USA

10730 E. Briarwood Avenue  
Centennial, CO 80112  
USA  
Phone: 303.730.1950  
Toll Free: 1.888.506.6887  
Fax: 303.730.1966  
nb-customerservice@bio-techne.com

### Bio-Techne Canada

21 Canmotor Ave  
Toronto, ON M8Z 4E6  
Canada  
Phone: 905.827.6400  
Toll Free: 855.668.8722  
Fax: 905.827.6402  
canada.inquires@bio-techne.com

### Bio-Techne Ltd

19 Barton Lane  
Abingdon Science Park  
Abingdon, OX14 3NB, United Kingdom  
Phone: (44) (0) 1235 529449  
Free Phone: 0800 37 34 15  
Fax: (44) (0) 1235 533420  
info.EMEA@bio-techne.com

### General Contact Information

www.novusbio.com  
Technical Support: nb-technical@bio-techne.com  
Orders: nb-customerservice@bio-techne.com  
General: novus@novusbio.com

### Limitations

This product is for research use only and is not approved for use in humans or in clinical diagnosis. Primary Antibodies are guaranteed for 1 year from date of receipt.

For more information on our 100% guarantee, please visit [www.novusbio.com/guarantee](http://www.novusbio.com/guarantee)

Earn gift cards/discounts by submitting a review: [www.novusbio.com/reviews/submit/NBP1-53162](http://www.novusbio.com/reviews/submit/NBP1-53162)

Earn gift cards/discounts by submitting a publication using this product:  
[www.novusbio.com/publications](http://www.novusbio.com/publications)

