

Product Datasheet

CHIP/STUB1 Antibody NBP1-53139

Unit Size: 100 ul

Store at -20C. Avoid freeze-thaw cycles.

www.novusbio.com



technical@novusbio.com

Protocols, Publications, Related Products, Reviews, Research Tools and Images at:
www.novusbio.com/NBP1-53139

Updated 2/5/2017 v.20.1

Earn rewards for product
reviews and publications.

Submit a publication at www.novusbio.com/publications

Submit a review at www.novusbio.com/reviews/destination/NBP1-53139



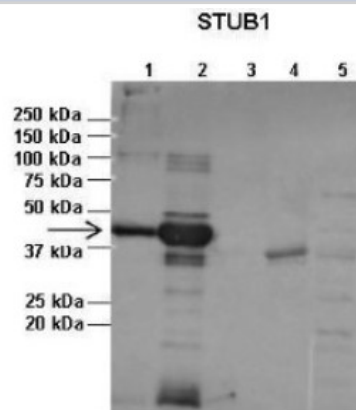
NBP1-53139

CHIP/STUB1 Antibody

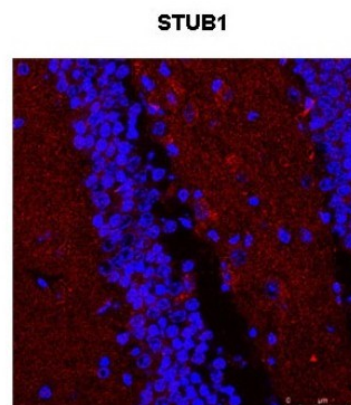
Product Information	
Unit Size	100 ul
Concentration	Please see the vial label for concentration. If unlisted please contact technical services.
Storage	Store at -20C. Avoid freeze-thaw cycles.
Clonality	Polyclonal
Preservative	No Preservative
Purity	Immunogen affinity purified
Buffer	PBS & 2% Sucrose.
Product Description	
Host	Rabbit
Gene ID	10273
Gene Symbol	STUB1
Species	Human, Mouse
Immunogen	Synthetic peptides corresponding to STUB1(STIP1 homology and U-box containing protein 1) The peptide sequence was selected from the N terminal of STUB1. Peptide sequence MKGKKEEKEGGARLGAGGGSPKSPSAQELKEQGNRLFVGRKYPEAAACYG.
Notes	The addition of 50% glycerol is optional for those storing this antibody at -20C and not aliquoting smaller units. However, please note that glycerol may interrupt some downstream antibody applications and should be added with caution.
Product Application Details	
Applications	Western Blot, Immunocytochemistry/Immunofluorescence
Recommended Dilutions	Western Blot 1:100-1:2000, Immunocytochemistry/Immunofluorescence 1:10-1:2000
Application Notes	This is a rabbit polyclonal antibody against STUB1 and was validated on Western blot.

Images

Western Blot: CHIP/STUB1 Antibody [NBP1-53139] - Lanes: 1 : 1ug insoluble STUB1 protein, 2: 1ug soluble STUB1 protein, 3: 1ug EPM2A protein, 4: 1ug insoluble PPP1R3C protein, 5: 1ug soluble PPP1R3C protein Primary Antibody Dilution: 1 : 2500 Secondary Antibody: Anti-rabbit-AP Secondary Antibody Dilution: 1 : 20,000 Gene name: STUB1 Submitted by: Pedro Castanheira, Biocant.



Immunocytochemistry/Immunofluorescence: CHIP/STUB1 Antibody [NBP1-53139] - Mouse Brain Slices, Red: Primary (1:400) Blue: DAPI Secondary: Anti-Rabbit IgG Alexa 594 (1:400)



Western Blot: CHIP/STUB1 Antibody [NBP1-53139] - Titration: 0.2-1 ug/ml, Positive Control: Human Spleen.





Novus Biologicals USA

8100 Southpark Way, A-8
Littleton, CO 80120
USA

Phone: 303.730.1950
Toll Free: 1.888.506.6887
Fax: 303.730.1966
novus@novusbio.com

Novus Biologicals Canada

461 North Service Road West, Unit B37
Oakville, ON L6M 2V5
Canada

Phone: 905.827.6400
Toll Free: 855.668.8722
Fax: 905.827.6402
canada@novusbio.com

Novus Biologicals Europe

19 Barton Lane
Abingdon Science Park
Abingdon, OX14 3NB, United Kingdom
Phone: (44) (0) 1235 529449
Free Phone: 0800 37 34 15
Fax: (44) (0) 1235 533420
info@bio-techne.com

General Contact Information

www.novusbio.com
Technical Support: technical@novusbio.com
Orders: orders@novusbio.com
General: novus@novusbio.com

Limitations

This product is for research use only and is not approved for use in humans or in clinical diagnosis. Primary Antibodies are guaranteed for 1 year from date of receipt.

For more information on our 100% guarantee, please visit www.novusbio.com/guarantee

Earn gift cards/discounts by submitting a review: www.novusbio.com/reviews/submit/NBP1-53139

Earn gift cards/discounts by submitting a publication using this product:
www.novusbio.com/publications

