

# Product Datasheet

## KLHL11 Antibody (1B9A8) NBP1-51625

Unit Size: 0.1 ml

Store at 4C short term. Aliquot and store at -20C long term. Avoid freeze-thaw cycles.

[www.novusbio.com](http://www.novusbio.com)



[technical@novusbio.com](mailto:technical@novusbio.com)

Protocols, Publications, Related Products, Reviews, Research Tools and Images at:  
[www.novusbio.com/NBP1-51625](http://www.novusbio.com/NBP1-51625)

Updated 5/13/2021 v.20.1

Earn rewards for product  
reviews and publications.

Submit a publication at [www.novusbio.com/publications](http://www.novusbio.com/publications)

Submit a review at [www.novusbio.com/reviews/destination/NBP1-51625](http://www.novusbio.com/reviews/destination/NBP1-51625)



**NBP1-51625**

KLHL11 Antibody (1B9A8)

Product Information	
Unit Size	0.1 ml
Concentration	This product is unpurified. The exact concentration of antibody is not quantifiable.
Storage	Store at 4C short term. Aliquot and store at -20C long term. Avoid freeze-thaw cycles.
Clonality	Monoclonal
Clone	1B9A8
Preservative	0.03% Sodium Azide
Isotype	IgG1
Purity	Unpurified
Buffer	Ascites
Target Molecular Weight	80 kDa

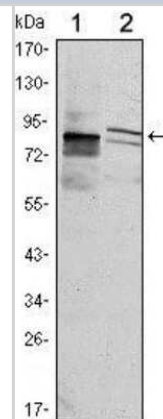
Product Description	
Host	Mouse
Gene ID	55175
Gene Symbol	KLHL11
Species	Human
Reactivity Notes	Human
Immunogen	Purified recombinant fragment of human KLHL11 expressed in E. Coli.

Product Application Details	
Applications	Western Blot, ELISA, Flow Cytometry, Immunocytochemistry/Immunofluorescence
Recommended Dilutions	Western Blot 1:500-1:2000, Flow Cytometry, ELISA 1:10000, Immunocytochemistry/Immunofluorescence 1:200-1:1000

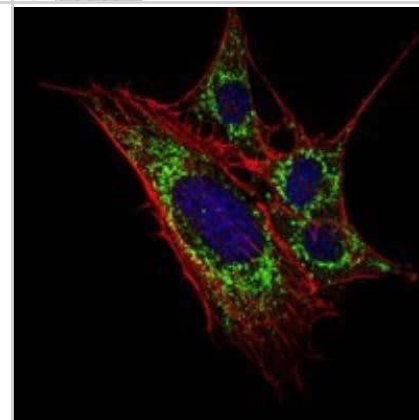


## Images

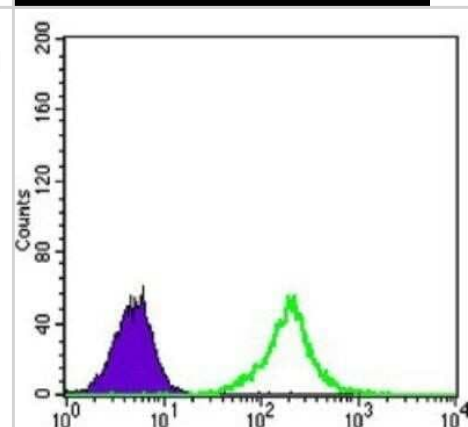
Western Blot: KLHL11 Antibody (1B9A8) [NBP1-51625] - Western blot analysis using KLHL11 mouse mAb against Hela (1) and MCF-7 (2) cell lysate.



Immunocytochemistry/Immunofluorescence: KLHL11 Antibody (1B9A8) [NBP1-51625] - Immunofluorescence analysis of 3T3-L1 cells using KLHL11 mouse mAb (green). Blue: DRAQ5 fluorescent DNA dye. Red: Actin filaments have been labeled with Alexa Fluor-555 phalloidin.



Flow Cytometry: KLHL11 Antibody (1B9A8) [NBP1-51625] - Flow cytometric analysis of K562 cells using KLHL11 mouse mAb (green) and negative control (purple).





### **Novus Biologicals USA**

10730 E. Briarwood Avenue  
Centennial, CO 80112  
USA  
Phone: 303.730.1950  
Toll Free: 1.888.506.6887  
Fax: 303.730.1966  
nb-customerservice@bio-techne.com

### **Bio-Techne Canada**

21 Canmotor Ave  
Toronto, ON M8Z 4E6  
Canada  
Phone: 905.827.6400  
Toll Free: 855.668.8722  
Fax: 905.827.6402  
canada.inquires@bio-techne.com

### **Bio-Techne Ltd**

19 Barton Lane  
Abingdon Science Park  
Abingdon, OX14 3NB, United Kingdom  
Phone: (44) (0) 1235 529449  
Free Phone: 0800 37 34 15  
Fax: (44) (0) 1235 533420  
info.EMEA@bio-techne.com

### **General Contact Information**

[www.novusbio.com](http://www.novusbio.com)  
Technical Support: nb-technical@bio-techne.com  
Orders: nb-customerservice@bio-techne.com  
General: novus@novusbio.com

### **Limitations**

This product is for research use only and is not approved for use in humans or in clinical diagnosis. Primary Antibodies are guaranteed for 1 year from date of receipt.

For more information on our 100% guarantee, please visit [www.novusbio.com/guarantee](http://www.novusbio.com/guarantee)

Earn gift cards/discounts by submitting a review: [www.novusbio.com/reviews/submit/NBP1-51625](http://www.novusbio.com/reviews/submit/NBP1-51625)

Earn gift cards/discounts by submitting a publication using this product:  
[www.novusbio.com/publications](http://www.novusbio.com/publications)

