

Product Datasheet

Myosin light chain 3 Antibody (7C1) NBP1-51569

Unit Size: 0.1 ml

Store at 4C short term. Aliquot and store at -20C long term. Avoid freeze-thaw cycles.

www.novusbio.com



technical@novusbio.com

Publications: 1

Protocols, Publications, Related Products, Reviews, Research Tools and Images at:
www.novusbio.com/NBP1-51569

Updated 5/13/2021 v.20.1

Earn rewards for product
reviews and publications.

Submit a publication at www.novusbio.com/publications

Submit a review at www.novusbio.com/reviews/destination/NBP1-51569



NBP1-51569**Myosin light chain 3 Antibody (7C1)**

Product Information	
Unit Size	0.1 ml
Concentration	This product is unpurified. The exact concentration of antibody is not quantifiable.
Storage	Store at 4C short term. Aliquot and store at -20C long term. Avoid freeze-thaw cycles.
Clonality	Monoclonal
Clone	7C1
Preservative	0.03% Sodium Azide
Isotype	IgG1
Purity	Unpurified
Buffer	Ascites
Target Molecular Weight	22 kDa

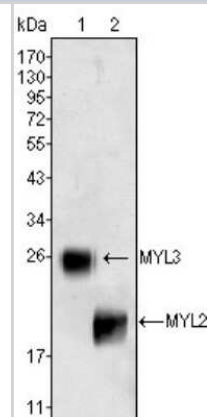
Product Description	
Host	Mouse
Gene ID	4634
Gene Symbol	MYL3
Species	Human
Immunogen	Purified recombinant fragment of MYL3 expressed in E. Coli.

Product Application Details	
Applications	Western Blot, ELISA, Immunohistochemistry, Immunohistochemistry-Paraffin
Recommended Dilutions	Western Blot 1:500-1:2000, ELISA 1:10000, Immunohistochemistry 1:10-1:500, Immunohistochemistry-Paraffin 1:200-1:1000

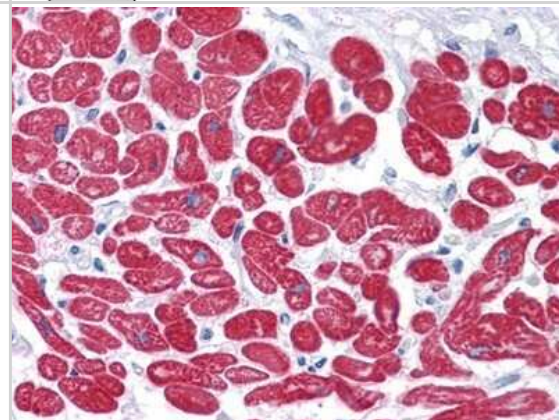


Images

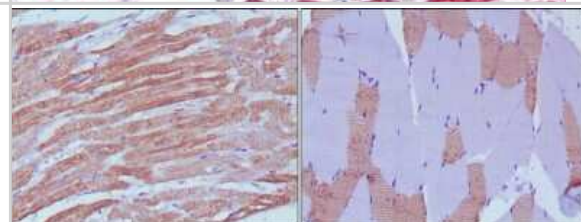
Western Blot: Myosin light chain 3 Antibody (7C1) [NBP1-51569] - Western blot analysis using MYL3 (1) and MYL2 (2) mouse mAb against rat fetal heart tissues lysate.



Immunohistochemistry-Paraffin: Myosin light chain 3 Antibody (7C1) [NBP1-51569] - Immunohistochemical analysis of paraffin-embedded human Heart tissues using MYL3 mouse mAb.



Immunohistochemistry-Paraffin: Myosin light chain 3 Antibody (7C1) [NBP1-51569] - Immunohistochemical analysis of paraffin-embedded human skeletal muscle (left) and cardiac muscle (right) using MYL3 mouse mAb with DAB staining.



Publications

Su YR, Chiusa M, Brittain E et al. Right ventricular protein expression profile in end-stage heart failure. Pulm Circ 2015-09-01 [PMID: 26401249] (WB)



Novus Biologicals USA

10730 E. Briarwood Avenue
Centennial, CO 80112
USA
Phone: 303.730.1950
Toll Free: 1.888.506.6887
Fax: 303.730.1966
nb-customerservice@bio-techne.com

Bio-Techne Canada

21 Canmotor Ave
Toronto, ON M8Z 4E6
Canada
Phone: 905.827.6400
Toll Free: 855.668.8722
Fax: 905.827.6402
canada.inquires@bio-techne.com

Bio-Techne Ltd

19 Barton Lane
Abingdon Science Park
Abingdon, OX14 3NB, United Kingdom
Phone: (44) (0) 1235 529449
Free Phone: 0800 37 34 15
Fax: (44) (0) 1235 533420
info.EMEA@bio-techne.com

General Contact Information

www.novusbio.com
Technical Support: nb-technical@bio-techne.com
Orders: nb-customerservice@bio-techne.com
General: novus@novusbio.com

Limitations

This product is for research use only and is not approved for use in humans or in clinical diagnosis. Primary Antibodies are guaranteed for 1 year from date of receipt.

For more information on our 100% guarantee, please visit www.novusbio.com/guarantee

Earn gift cards/discounts by submitting a review: www.novusbio.com/reviews/submit/NBP1-51569

Earn gift cards/discounts by submitting a publication using this product:
www.novusbio.com/publications

