

Product Datasheet

Mouse anti-Human IgG Heavy Chain Secondary Antibody (4D2D9G8) (BSA Free) NBP1-51523

Unit Size: 0.1 ml

Store at 4C short term. Aliquot and store at -20C long term. Avoid freeze-thaw cycles.

www.novusbio.com



technical@novusbio.com

Protocols, Publications, Related Products, Reviews, Research Tools and Images at:
www.novusbio.com/NBP1-51523

Updated 9/21/2025 v.20.1

Earn rewards for product
reviews and publications.

Submit a publication at www.novusbio.com/publications

Submit a review at www.novusbio.com/reviews/destination/NBP1-51523



NBP1-51523

Mouse anti-Human IgG Heavy Chain Secondary Antibody (4D2D9G8) (BSA Free)

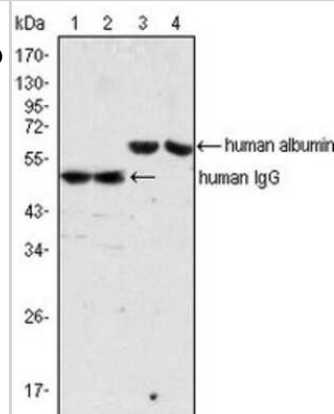
Product Information	
Unit Size	0.1 ml
Concentration	1.0 mg/ml
Storage	Store at 4C short term. Aliquot and store at -20C long term. Avoid freeze-thaw cycles.
Clonality	Monoclonal
Clone	4D2D9G8
Preservative	0.03% Sodium Azide
Isotype	IgG1
Purity	Protein G purified
Buffer	PBS

Product Description	
Host	Mouse
Species	Human
Specificity/Sensitivity	Monoclonal anti-Human IgG is derived from a hybridoma produced by the fusion of mouse myeloma cells and splenocytes from an immunized mouse. It is specific for the IgG heavy chain, and has no cross reactivity with human IgM molecule as determined by an ELISA.
Immunogen	Human IgG was isolated from human sera and purified by chromatography.

Product Application Details	
Applications	Western Blot, ELISA
Recommended Dilutions	Western Blot 1:500 - 1:2000, ELISA 1:10000
Application Notes	This secondary antibody is useful for Western blot and ELISA.

Images

Western Blot: Mouse anti-Human IgG Heavy Chain Secondary Antibody (4D2D9G8) [NBP1-51523] - Western blot analysis using IgG mouse mAb (lane 1, 2) and Albumin mouse mAb (lane 3, 4) against human serum (lane 1, 3) and plasma (lane 2, 4).





Novus Biologicals USA

10730 E. Briarwood Avenue
Centennial, CO 80112
USA
Phone: 303.730.1950
Toll Free: 1.888.506.6887
Fax: 303.730.1966
nb-customerservice@bio-techne.com

Bio-Techne Canada

21 Canmotor Ave
Toronto, ON M8Z 4E6
Canada
Phone: 905.827.6400
Toll Free: 855.668.8722
Fax: 905.827.6402
canada.inquires@bio-techne.com

Bio-Techne Ltd

19 Barton Lane
Abingdon Science Park
Abingdon, OX14 3NB, United Kingdom
Phone: (44) (0) 1235 529449
Free Phone: 0800 37 34 15
Fax: (44) (0) 1235 533420
info.EMEA@bio-techne.com

General Contact Information

www.novusbio.com
Technical Support: nb-technical@bio-
techne.com
Orders: nb-customerservice@bio-techne.com
General: novus@novusbio.com

Products Related to NBP1-51523

NBP2-62019	IgG Heavy Chain Antibody (RM116)
------------	----------------------------------

Limitations

This product is for research use only and is not approved for use in humans or in clinical diagnosis. Secondary Antibodies are guaranteed for 1 year from date of receipt.

For more information on our 100% guarantee, please visit www.novusbio.com/guarantee

Earn gift cards/discounts by submitting a review: www.novusbio.com/reviews/submit/NBP1-51523

Earn gift cards/discounts by submitting a publication using this product:
www.novusbio.com/publications

