

Product Datasheet

CRMP2 Antibody (33CT11.40.3) NBP1-50580

Unit Size: 0.05 ml

Store at 4C short term. Aliquot and store at -20C long term. Avoid freeze-thaw cycles.

www.novusbio.com



technical@novusbio.com

Publications: 2

Protocols, Publications, Related Products, Reviews, Research Tools and Images at:
www.novusbio.com/NBP1-50580

Updated 12/20/2023 v.20.1

Earn rewards for product
reviews and publications.

Submit a publication at www.novusbio.com/publications

Submit a review at www.novusbio.com/reviews/destination/NBP1-50580



NBP1-50580

CRMP2 Antibody (33CT11.40.3)

| Product Information | |
|----------------------------|--|
| Unit Size | 0.05 ml |
| Concentration | Concentrations vary lot to lot. See vial label for concentration. If unlisted please contact technical services. |
| Storage | Store at 4C short term. Aliquot and store at -20C long term. Avoid freeze-thaw cycles. |
| Clonality | Monoclonal |
| Clone | 33CT11.40.3 |
| Preservative | 0.9% Sodium Azide |
| Isotype | IgG2b |
| Purity | Protein G purified |
| Buffer | PBS |

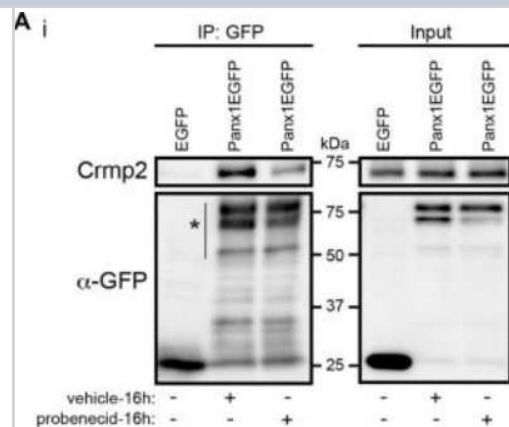
| Product Description | |
|----------------------------|---|
| Host | Mouse |
| Gene ID | 1808 |
| Gene Symbol | DPYSL2 |
| Species | Human, Mouse |
| Reactivity Notes | Please note that this antibody is reactive to Mouse and derived from the same host, Mouse. Mouse-On-Mouse blocking reagent may be needed for IHC and ICC experiments to reduce high background signal. You can find these reagents under catalog numbers PK-2200-NB and MP-2400-NB. Please contact Technical Support if you have any questions. |
| Immunogen | KLH-conjugated synthetic peptide between aa 463-492 from human CRMP2. |

| Product Application Details | |
|------------------------------------|--|
| Applications | Western Blot, Immunohistochemistry, Immunohistochemistry-Paraffin, Proximity Ligation Assay |
| Recommended Dilutions | Western Blot 1:2000, Immunohistochemistry, Immunohistochemistry-Paraffin 1:200, Proximity Ligation Assay |
| Application Notes | Use in Proximity Ligation Assay reported in scientific literature (PMID: 29867357). |

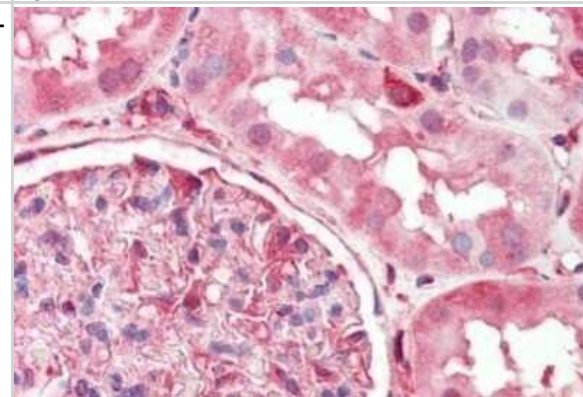


Images

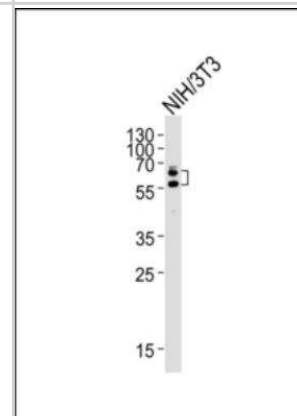
Western Blot: CRMP2 Antibody (33CT11.40.3) [NBP1-50580] - Probenecid treatment decreases Crmp2 co-precipitation with Panx1. Western blot of a GFP IP from N2a cells expressing Panx1-EGFP, or EGFP control, treated (16 h) with probenecid or vehicle control. (ii) Probenecid treatment (16 h) significantly decreased the amount of Crmp2 that precipitated with Panx1-EGFP. Crmp2 signal in the IP fraction was normalized to GFP signal intensity from the same lane (Panx1-EGFP [vehicle] vs. Panx1-EGFP [probenecid]: 100.0 \pm 0.8 vs. 39.4 \pm 19.6, $p = 0.0368$, $n = 3$, unpaired t-test). Image collected and cropped by CiteAb from the following publication ([//journal.frontiersin.org/article/10.3389/fncel.2018.00124/full](http://journal.frontiersin.org/article/10.3389/fncel.2018.00124/full)) licensed under a CC-BY license.



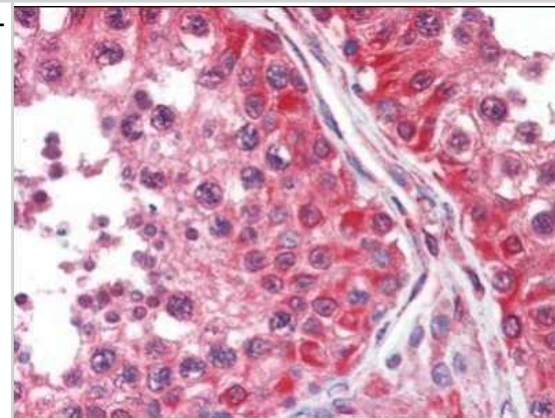
Immunohistochemistry-Paraffin: CRMP2 Antibody (33CT11.40.3) [NBP1-50580] - Analysis of anti-CRMP-2 antibody with human kidney at dilution 1:200.



Western Blot: CRMP2 Antibody (33CT11.40.3) [NBP1-50580] - Mouse NIH/3T3 cell line, diluted at 1:2000. Goat anti-mouse at 1:3000 dilution was used as the secondary antibody. Lysate at 20ug.



Immunohistochemistry-Paraffin: CRMP2 Antibody (33CT11.40.3) [NBP1-50580] - Analysis of anti-CRMP-2 antibody with human testis at dilution 1:200.



Publications

Lee M, Cho H, Jung SH et al. Circulating MicroRNA Expression Levels Associated With Internet Gaming Disorder Front Psychiatry 2018-03-12 [PMID: 29593587] (WB, Human)

Xu X, Wicki-Stordeur LE, Sanchez-Arias JC et al. Probenecid Disrupts a Novel Pannexin 1-Collapsin Response Mediator Protein 2 Interaction and Increases Microtubule Stability Front Cell Neurosci 2018-05-11 [PMID: 29867357] (PLA, WB, Mouse)



Novus Biologicals USA

10730 E. Briarwood Avenue
Centennial, CO 80112
USA

Phone: 303.730.1950

Toll Free: 1.888.506.6887

Fax: 303.730.1966

nb-customerservice@bio-techne.com

Bio-Techne Canada

21 Canmotor Ave
Toronto, ON M8Z 4E6
Canada

Phone: 905.827.6400

Toll Free: 855.668.8722

Fax: 905.827.6402

canada.inquires@bio-techne.com

Bio-Techne Ltd

19 Barton Lane
Abingdon Science Park
Abingdon, OX14 3NB, United Kingdom

Phone: (44) (0) 1235 529449

Free Phone: 0800 37 34 15

Fax: (44) (0) 1235 533420

info.EMEA@bio-techne.com

General Contact Information

www.novusbio.com

Technical Support: nb-technical@bio-techne.com

Orders: nb-customerservice@bio-techne.com

General: novus@novusbio.com

Limitations

This product is for research use only and is not approved for use in humans or in clinical diagnosis. Primary Antibodies are guaranteed for 1 year from date of receipt.

For more information on our 100% guarantee, please visit www.novusbio.com/guarantee

Earn gift cards/discounts by submitting a review: www.novusbio.com/reviews/submit/NBP1-50580

Earn gift cards/discounts by submitting a publication using this product:

www.novusbio.com/publications

