

Product Datasheet

CCR2 Antibody [DyLight 650]

NBP1-48337C

Unit Size: 0.1 ml

Store at 4C in the dark.

www.novusbio.com



technical@novusbio.com

Protocols, Publications, Related Products, Reviews, Research Tools and Images at:
www.novusbio.com/NBP1-48337C

Updated 10/23/2024 v.20.1

Earn rewards for product
reviews and publications.

Submit a publication at www.novusbio.com/publications

Submit a review at www.novusbio.com/reviews/destination/NBP1-48337C



NBP1-48337C

CCR2 Antibody [DyLight 650]

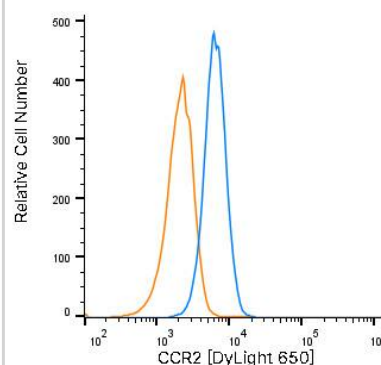
Product Information	
Unit Size	0.1 ml
Concentration	Please see the vial label for concentration. If unlisted please contact technical services.
Storage	Store at 4C in the dark.
Clonality	Polyclonal
Preservative	0.05% Sodium Azide
Isotype	IgG
Conjugate	DyLight 650
Purity	Immunogen affinity purified
Buffer	50mM Sodium Borate

Product Description	
Host	Rabbit
Gene ID	729230
Gene Symbol	CCR2
Species	Human, Rat, Bovine, Feline
Reactivity Notes	Feline reactivity reported in scientific literature (PMID: 30395163). Use in Bovine reported in scientific literature (PMID:31761882). Reactivity with Rat reported by verified customer. The immunogen sequence similarity with other species: Rhesus monkey and several other primate species (100%), Mouse (69%).
Immunogen	Synthetic peptide made to an N-terminal portion of the human CCR2 protein (within residues 20-100). [Swiss-Prot# P41597]
Notes	DyLight (R) is a trademark of Thermo Fisher Scientific Inc. and its subsidiaries.

Product Application Details	
Applications	Western Blot, Flow Cytometry, Immunocytochemistry/ Immunofluorescence, Immunohistochemistry, Immunohistochemistry-Paraffin
Recommended Dilutions	Western Blot, Flow Cytometry, Immunohistochemistry, Immunocytochemistry/ Immunofluorescence, Immunohistochemistry-Paraffin
Application Notes	Optimal dilution of this antibody should be experimentally determined.

Images

THP-1 human acute monocytic leukemia cell line was stained with Rabbit anti-CCR2 Affinity-purified Polyclonal Antibody conjugated to DyLight 650 (Catalog # NBP1-48337C, blue histogram) or matched control antibody (Catalog #NBP2-24891C, orange histogram).



Copyright © 2024 Novus Biologicals, a Bio-Techne Brand



Novus Biologicals USA

10730 E. Briarwood Avenue
Centennial, CO 80112
USA
Phone: 303.730.1950
Toll Free: 1.888.506.6887
Fax: 303.730.1966
nb-customerservice@bio-techne.com

Bio-Techne Canada

21 Canmotor Ave
Toronto, ON M8Z 4E6
Canada
Phone: 905.827.6400
Toll Free: 855.668.8722
Fax: 905.827.6402
canada.inquires@bio-techne.com

Bio-Techne Ltd

19 Barton Lane
Abingdon Science Park
Abingdon, OX14 3NB, United Kingdom
Phone: (44) (0) 1235 529449
Free Phone: 0800 37 34 15
Fax: (44) (0) 1235 533420
info.EMEA@bio-techne.com

General Contact Information

www.novusbio.com
Technical Support: nb-technical@bio-
techne.com
Orders: nb-customerservice@bio-techne.com
General: novus@novusbio.com

Products Related to NBP1-48337C

NBP2-24891C	Rabbit IgG Isotype Control [DyLight 650]
NBP1-48338PEP	CCR2 Antibody Blocking Peptide
210-TA-005	TNF-alpha [Unconjugated]
NBP1-48337PEP	CCR2 Antibody Blocking Peptide

Limitations

This product is for research use only and is not approved for use in humans or in clinical diagnosis. Primary Antibodies are guaranteed for 1 year from date of receipt.

For more information on our 100% guarantee, please visit www.novusbio.com/guarantee

Earn gift cards/discounts by submitting a review: www.novusbio.com/reviews/submit/NBP1-48337C

Earn gift cards/discounts by submitting a publication using this product:
www.novusbio.com/publications

