

Product Datasheet

Lactate Dehydrogenase A/LDHA Antibody [DyLight 550] NBP1-48336R

Unit Size: 0.1 ml

Store at 4C in the dark.

www.novusbio.com



technical@novusbio.com

Protocols, Publications, Related Products, Reviews, Research Tools and Images at:
www.novusbio.com/NBP1-48336R

Updated 10/23/2024 v.20.1

Earn rewards for product
reviews and publications.

Submit a publication at www.novusbio.com/publications

Submit a review at www.novusbio.com/reviews/destination/NBP1-48336R



NBP1-48336R

Lactate Dehydrogenase A/LDHA Antibody [DyLight 550]

Product Information

Unit Size	0.1 ml
Concentration	Please see the vial label for concentration. If unlisted please contact technical services.
Storage	Store at 4C in the dark.
Clonality	Polyclonal
Preservative	0.05% Sodium Azide
Isotype	IgG
Conjugate	DyLight 550
Purity	Immunogen affinity purified
Buffer	50mM Sodium Borate

Product Description

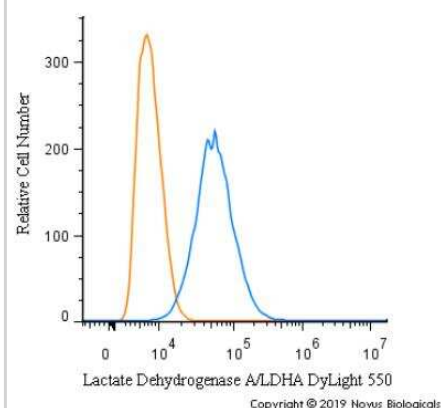
Host	Rabbit
Gene ID	3939
Gene Symbol	LDHA
Species	Human, Mouse, Porcine, Bovine
Reactivity Notes	Porcine reactivity reported in scientific literature (Elgin et al).
Immunogen	Synthetic peptide made to a C-terminal portion of the human Lactate Dehydrogenase A protein (within residues 280-332). [Swiss-Prot# P00338]
Notes	DyLight (R) is a trademark of Thermo Fisher Scientific Inc. and its subsidiaries.

Product Application Details

Applications	Western Blot, Simple Western, ELISA, Flow Cytometry, Immunocytochemistry/Immunofluorescence, Immunohistochemistry, Immunohistochemistry-Frozen, Immunohistochemistry-Paraffin
Recommended Dilutions	Western Blot, Simple Western, Flow Cytometry, ELISA, Immunohistochemistry, Immunocytochemistry/Immunofluorescence, Immunohistochemistry-Paraffin, Immunohistochemistry-Frozen
Application Notes	Optimal dilution of this antibody should be experimentally determined.

Images

Flow Cytometry: Lactate Dehydrogenase A/LDHA Antibody [DyLight 550] [NBP1-48336R] - An intracellular stain was performed on U-87 cells with Lactate Dehydrogenase A/LDHA Antibody NBP1-48336R (blue) and a matched isotype control (orange). Cells were fixed with 4% PFA and then permeabilized with 0.1% saponin. Cells were incubated in an antibody dilution of 5 ug/mL for 30 minutes at room temperature. Both antibodies were conjugated to DyLight 550.





Novus Biologicals USA

10730 E. Briarwood Avenue
Centennial, CO 80112
USA
Phone: 303.730.1950
Toll Free: 1.888.506.6887
Fax: 303.730.1966
nb-customerservice@bio-techne.com

Bio-Techne Canada

21 Canmotor Ave
Toronto, ON M8Z 4E6
Canada
Phone: 905.827.6400
Toll Free: 855.668.8722
Fax: 905.827.6402
canada.inquires@bio-techne.com

Bio-Techne Ltd

19 Barton Lane
Abingdon Science Park
Abingdon, OX14 3NB, United Kingdom
Phone: (44) (0) 1235 529449
Free Phone: 0800 37 34 15
Fax: (44) (0) 1235 533420
info.EMEA@bio-techne.com

General Contact Information

www.novusbio.com
Technical Support: nb-technical@bio-techne.com
Orders: nb-customerservice@bio-techne.com
General: novus@novusbio.com

Products Related to NBP1-48336R

NBP2-24891R	Rabbit IgG Isotype Control [DyLight 550]
NBP1-48336PEP	Lactate Dehydrogenase A/LDHA Antibody Blocking Peptide
DVE00	VEGF [HRP]
9158-HA-010	Lactate Dehydrogenase A/LDHA [Unconjugated]

Limitations

This product is for research use only and is not approved for use in humans or in clinical diagnosis. Primary Antibodies are guaranteed for 1 year from date of receipt.

For more information on our 100% guarantee, please visit www.novusbio.com/guarantee

Earn gift cards/discounts by submitting a review: www.novusbio.com/reviews/submit/NBP1-48336R

Earn gift cards/discounts by submitting a publication using this product:
www.novusbio.com/publications

