

# Product Datasheet

## Recombinant Human MDH2 His Protein NBP1-48325-0.05mg

Unit Size: 0.05 mg

Store at 4C short term. Aliquot and store at -20C long term. Avoid freeze-thaw cycles.

[www.novusbio.com](http://www.novusbio.com)



[technical@novusbio.com](mailto:technical@novusbio.com)

Protocols, Publications, Related Products, Reviews, Research Tools and Images at:  
[www.novusbio.com/NBP1-48325](http://www.novusbio.com/NBP1-48325)

Updated 10/23/2024 v.20.1

Earn rewards for product  
reviews and publications.

Submit a publication at [www.novusbio.com/publications](http://www.novusbio.com/publications)

Submit a review at [www.novusbio.com/reviews/destination/NBP1-48325](http://www.novusbio.com/reviews/destination/NBP1-48325)

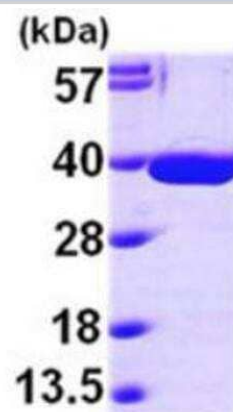


**NBP1-48325-0.05mg****Recombinant Human MDH2 His Protein**

Product Information	
Unit Size	0.05 mg
Concentration	1 mg/ml
Storage	Store at 4C short term. Aliquot and store at -20C long term. Avoid freeze-thaw cycles.
Preservative	No Preservative
Purity	>95%, by SDS-PAGE
Buffer	20 mM Tris-HCl buffer (pH 7.5), 10% glycerol
Target Molecular Weight	35.2 kDa
Product Description	
Description	<p>A bioactive recombinant protein with a N-Terminal His-tag and corresponding to the amino acids 25-338 of Human MDH2</p> <p><b>Source:</b> <i>E.coli</i></p> <p><b>Amino Acid Sequence:</b> MGSSHHHHHH SSGLVPRGSH MAKVAVLGAS GGIGQPLSLL LKNSPLVSRL TLYDIAHTPG VAADLSHIET KAAVKGYLGP EQLPDCLKGC DVVVIPAGVP RKPGMTRDDL FNTNATIVAT LTAACAQHCP EAMICVIANP VNSTIPITAE VFKKHGVYNP NKIFGVTTLD IVRANTFVAE LKGLDPARVN VPVIGGHAGK TIPLISQCT PKVDFFPDQL TALTGRIQEA GTEVVKAKAG AGSATLSMAY AGARFVFSLV DAMNGKEGVV ECSFVKSQET ECTYFSTPLL LGKKGIEKNL GIGKVSSFEE KMISDAIPEL KASIKKGEDF VKTLK</p>
Gene ID	4191
Gene Symbol	MDH2
Species	Human
Details of Functionality	Specific activity is > 700 units/mg, and is defined as the amount of enzyme that cleaves 1umole of oxalacetate and beta-NADH to L-malate and beta-NAD per minute at pH8.0 at 37C.
Endotoxin Note	< 1.0 EU per 1 microgram of protein (determined by LAL method)
Product Application Details	
Applications	SDS-Page, Enzyme Activity
Recommended Dilutions	SDS-Page, Enzyme Activity

## Images

SDS-Page: Recombinant Human MDH2 Protein [NBP1-48325] - 15%  
SDS-PAGE (3 ug).





### **Novus Biologicals USA**

10730 E. Briarwood Avenue  
Centennial, CO 80112  
USA  
Phone: 303.730.1950  
Toll Free: 1.888.506.6887  
Fax: 303.730.1966  
nb-customerservice@bio-techne.com

### **Bio-Techne Canada**

21 Canmotor Ave  
Toronto, ON M8Z 4E6  
Canada  
Phone: 905.827.6400  
Toll Free: 855.668.8722  
Fax: 905.827.6402  
canada.inquires@bio-techne.com

### **Bio-Techne Ltd**

19 Barton Lane  
Abingdon Science Park  
Abingdon, OX14 3NB, United Kingdom  
Phone: (44) (0) 1235 529449  
Free Phone: 0800 37 34 15  
Fax: (44) (0) 1235 533420  
info.EMEA@bio-techne.com

### **General Contact Information**

www.novusbio.com  
Technical Support: nb-technical@bio-techne.com  
Orders: nb-customerservice@bio-techne.com  
General: novus@novusbio.com

### **Products Related to NBP1-48325-0.05mg**

---

NBP2-61450-20ug	Recombinant Mouse MDH2 His Protein
AF3398	Catalase Antibody [Unconjugated]
NBP1-32259	MDH2 Antibody
NBP1-87069	SDHB Antibody

---

### **Limitations**

This product is for research use only and is not approved for use in humans or in clinical diagnosis. Peptides and proteins are guaranteed for 3 months from date of receipt.

For more information on our 100% guarantee, please visit [www.novusbio.com/guarantee](http://www.novusbio.com/guarantee)

Earn gift cards/discounts by submitting a review: [www.novusbio.com/reviews/submit/NBP1-48325](http://www.novusbio.com/reviews/submit/NBP1-48325)

Earn gift cards/discounts by submitting a publication using this product:  
[www.novusbio.com/publications](http://www.novusbio.com/publications)

