

# Product Datasheet

## **Lysine (K)-specific Demethylase 4C/KDM4C/JMJD2C Antibody (OTI5B9) NBP1-47815**

Unit Size: 0.1 ml

Store at -20C. Avoid freeze-thaw cycles.

[www.novusbio.com](http://www.novusbio.com)



[technical@novusbio.com](mailto:technical@novusbio.com)

Protocols, Publications, Related Products, Reviews, Research Tools and Images at:  
[www.novusbio.com/NBP1-47815](http://www.novusbio.com/NBP1-47815)

Updated 10/23/2024 v.20.1

Earn rewards for product  
reviews and publications.

Submit a publication at [www.novusbio.com/publications](http://www.novusbio.com/publications)

Submit a review at [www.novusbio.com/reviews/destination/NBP1-47815](http://www.novusbio.com/reviews/destination/NBP1-47815)



**NBP1-47815**

Lysine (K)-specific Demethylase 4C/KDM4C/JMJD2C Antibody (OTI5B9)

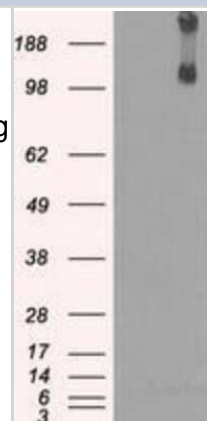
Product Information	
Unit Size	0.1 ml
Concentration	1 mg/ml
Storage	Store at -20C. Avoid freeze-thaw cycles.
Clonality	Monoclonal
Clone	OTI5B9
Preservative	0.02% Sodium Azide
Isotype	IgG1
Purity	Immunogen affinity purified
Buffer	PBS (pH 7.3), 1.0% BSA and 50% Glycerol
Target Molecular Weight	120 kDa

Product Description	
Host	Mouse
Gene ID	23081
Gene Symbol	KDM4C
Species	Human, Rat
Specificity/Sensitivity	This antibody is specific for Homo sapiens lysine (K)-specific demethylase 4C (KDM4C), transcript variant 1.
Immunogen	Full-length protein expressed in 293T cell transfected with human KDM4C expression vector

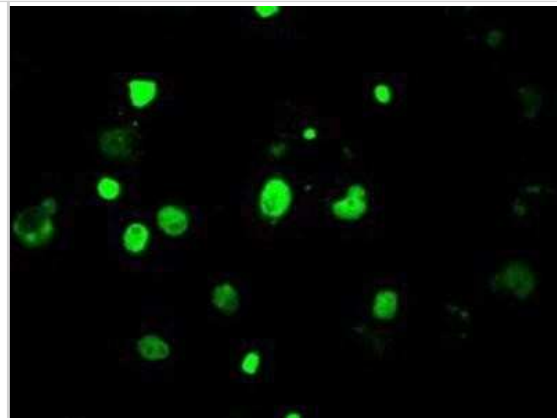
Product Application Details	
Applications	Western Blot, Immunocytochemistry/ Immunofluorescence, Immunohistochemistry, Immunohistochemistry-Paraffin
Recommended Dilutions	Western Blot 1:2000, Immunohistochemistry 1:50, Immunocytochemistry/ Immunofluorescence 1:100, Immunohistochemistry-Paraffin 1:50

**Images**

Western Blot: Lysine (K)-specific Demethylase 4C/KDM4C/JMJD2C Antibody (OTI5B9) [NBP1-47815] - HEK293T cells were transfected with the pCMV6-ENTRY control (Left lane) or pCMV6-ENTRY JMJD2C(Right lane) cDNA for 48 hrs and lysed. Equivalent amounts of cell lysates (5 ug per lane) were separated by SDS-PAGE and immunoblotted with anti-JMJD2C.



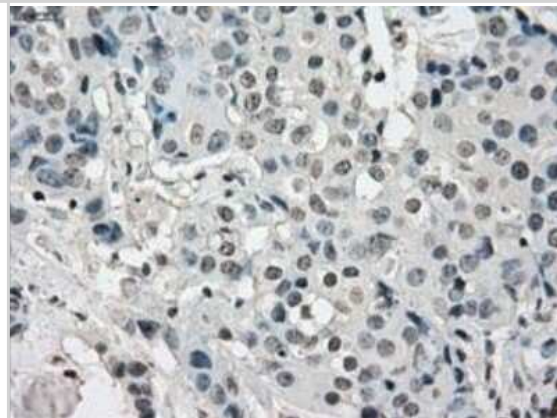
Immunocytochemistry/Immunofluorescence: Lysine (K)-specific Demethylase 4C/KDM4C/JMJD2C Antibody (OTI5B9) [NBP1-47815] - Staining of COS7 cells transiently transfected by pCMV6-ENTRY JMJD2C.



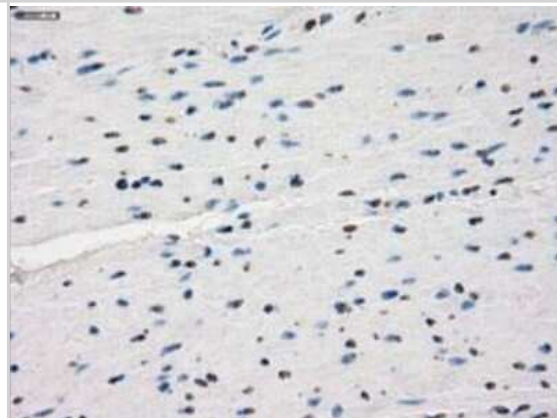
Immunohistochemistry-Paraffin: Lysine (K)-specific Demethylase 4C/KDM4C/JMJD2C Antibody (OTI5B9) [NBP1-47815] - Staining of paraffin-embedded pancreas tissue using anti-JMJD2C mouse monoclonal antibody.



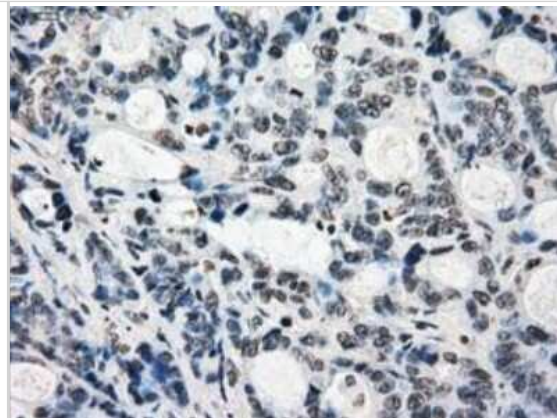
Immunohistochemistry-Paraffin: Lysine (K)-specific Demethylase 4C/KDM4C/JMJD2C Antibody (OTI5B9) [NBP1-47815] - Staining of paraffin-embedded Adenocarcinoma of breast tissue using anti-JMJD2C mouse monoclonal antibody.



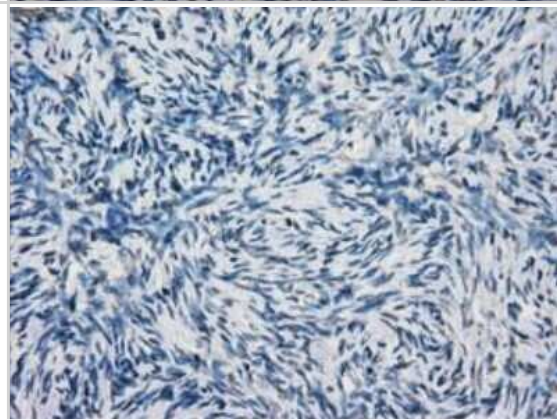
Immunohistochemistry-Paraffin: Lysine (K)-specific Demethylase 4C/KDM4C/JMJD2C Antibody (OTI5B9) [NBP1-47815] - Staining of paraffin-embedded Adenocarcinoma of colon tissue using anti-JMJD2C mouse monoclonal antibody.



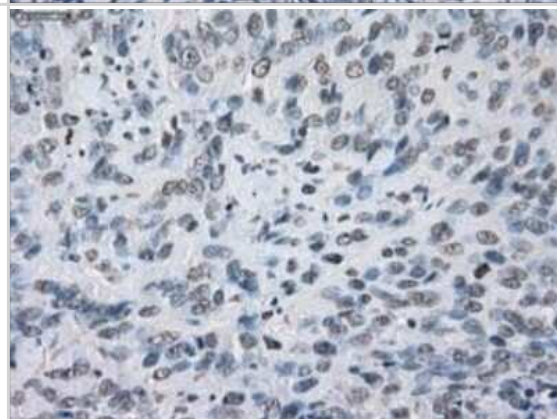
Immunohistochemistry-Paraffin: Lysine (K)-specific Demethylase 4C/KDM4C/JMJD2C Antibody (OTI5B9) [NBP1-47815] - Staining of paraffin-embedded Adenocarcinoma of ovary tissue using anti-JMJD2C mouse monoclonal antibody.



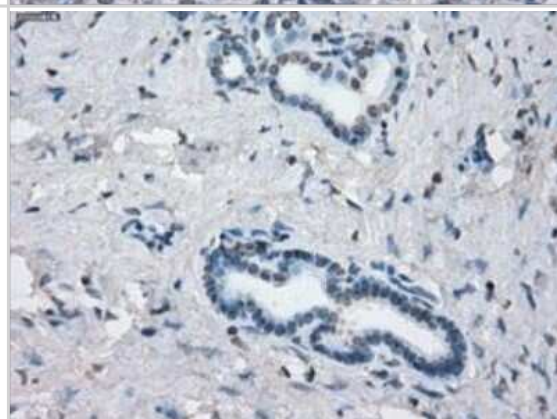
Immunohistochemistry-Paraffin: Lysine (K)-specific Demethylase 4C/KDM4C/JMJD2C Antibody (OTI5B9) [NBP1-47815] - Staining of paraffin-embedded Carcinoma of prostate tissue using anti-JMJD2C mouse monoclonal antibody.



Immunohistochemistry-Paraffin: Lysine (K)-specific Demethylase 4C/KDM4C/JMJD2C Antibody (OTI5B9) [NBP1-47815] - Staining of paraffin-embedded Carcinoma of thyroid tissue using anti-JMJD2C mouse monoclonal antibody.

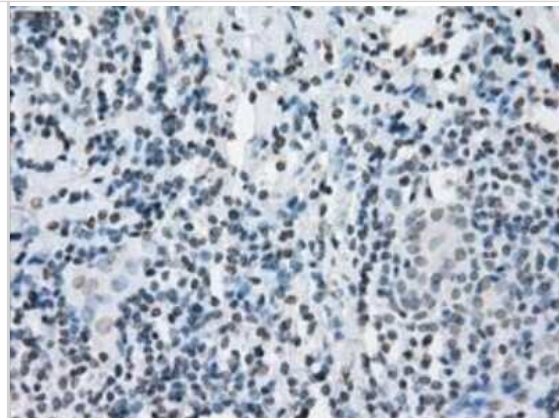


Immunohistochemistry-Paraffin: Lysine (K)-specific Demethylase 4C/KDM4C/JMJD2C Antibody (OTI5B9) [NBP1-47815] - Staining of paraffin-embedded colon tissue using anti-JMJD2C mouse monoclonal antibody.

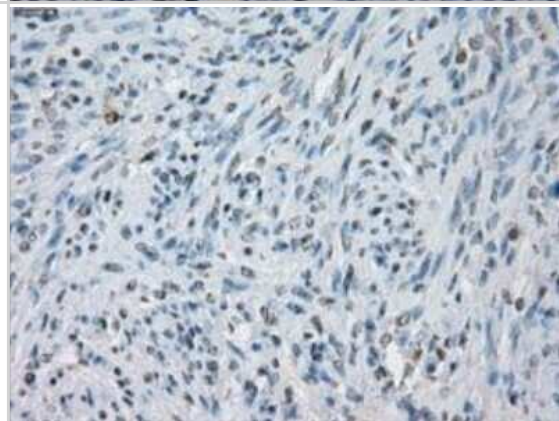




Immunohistochemistry-Paraffin: Lysine (K)-specific Demethylase 4C/KDM4C/JMJD2C Antibody (OTI5B9) [NBP1-47815] - Staining of paraffin-embedded endometrium tissue using anti-JMJD2C mouse monoclonal antibody.



Immunohistochemistry-Paraffin: Lysine (K)-specific Demethylase 4C/KDM4C/JMJD2C Antibody (OTI5B9) [NBP1-47815] - Staining of paraffin-embedded Ovary tissue using anti-JMJD2C mouse monoclonal antibody.





### **Novus Biologicals USA**

10730 E. Briarwood Avenue  
Centennial, CO 80112  
USA  
Phone: 303.730.1950  
Toll Free: 1.888.506.6887  
Fax: 303.730.1966  
nb-customerservice@bio-techne.com

### **Bio-Techne Canada**

21 Canmotor Ave  
Toronto, ON M8Z 4E6  
Canada  
Phone: 905.827.6400  
Toll Free: 855.668.8722  
Fax: 905.827.6402  
canada.inquires@bio-techne.com

### **Bio-Techne Ltd**

19 Barton Lane  
Abingdon Science Park  
Abingdon, OX14 3NB, United Kingdom  
Phone: (44) (0) 1235 529449  
Free Phone: 0800 37 34 15  
Fax: (44) (0) 1235 533420  
info.EMEA@bio-techne.com

### **General Contact Information**

www.novusbio.com  
Technical Support: nb-technical@bio-techne.com  
Orders: nb-customerservice@bio-techne.com  
General: novus@novusbio.com

### **Products Related to NBP1-47815**

---

HAF007	Goat anti-Mouse IgG Secondary Antibody [HRP]
NB720-B	Rabbit anti-Mouse IgG (H+L) Secondary Antibody [Biotin]
NBP1-97005-0.5mg	Mouse IgG1 Isotype Control (MG1)
NBP2-57484PEP	Lysine (K)-specific Demethylase 4C/KDM4C/JMJD2C Recombinant Protein Antigen

---

### **Limitations**

This product is for research use only and is not approved for use in humans or in clinical diagnosis. Primary Antibodies are guaranteed for 1 year from date of receipt.

For more information on our 100% guarantee, please visit [www.novusbio.com/guarantee](http://www.novusbio.com/guarantee)

Earn gift cards/discounts by submitting a review: [www.novusbio.com/reviews/submit/NBP1-47815](http://www.novusbio.com/reviews/submit/NBP1-47815)

Earn gift cards/discounts by submitting a publication using this product:  
[www.novusbio.com/publications](http://www.novusbio.com/publications)

