

Product Datasheet

Cre Antibody NBP1-47646

Unit Size: 0.05 ml

Aliquot and store at -20C or -80C. Avoid freeze-thaw cycles.

www.novusbio.com



technical@novusbio.com

Publications: 2

Protocols, Publications, Related Products, Reviews, Research Tools and Images at:
www.novusbio.com/NBP1-47646

Updated 8/13/2020 v.20.1

Earn rewards for product
reviews and publications.

Submit a publication at www.novusbio.com/publications

Submit a review at www.novusbio.com/reviews/destination/NBP1-47646



NBP1-47646

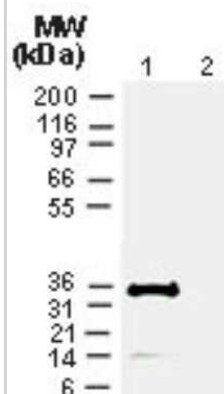
Cre Antibody

Product Information	
Unit Size	0.05 ml
Concentration	This product is unpurified. The exact concentration of antibody is not quantifiable.
Storage	Aliquot and store at -20C or -80C. Avoid freeze-thaw cycles.
Clonality	Polyclonal
Preservative	0.05% Sodium Azide
Isotype	IgG
Purity	Unpurified
Buffer	Whole antisera
Product Description	
Host	Rabbit
Species	Cre/lox System
Reactivity Notes	Not yet tested in other species.
Specificity/Sensitivity	CRE is detected at ~36-38 kDa on western blots.
Immunogen	Synthetic peptide corresponding to amino acids 57-73 (KLNNRKWFPAEPEDVRD) of the bacteriophage protein CRE.
Product Application Details	
Applications	Western Blot, Immunohistochemistry, Immunohistochemistry-Frozen, Immunohistochemistry-Paraffin, Immunoprecipitation
Recommended Dilutions	Western Blot 1:1000-1:2000, Immunohistochemistry, Immunoprecipitation 1:50-1:200, Immunohistochemistry-Paraffin 1:1000-1:5000, Immunohistochemistry-Frozen

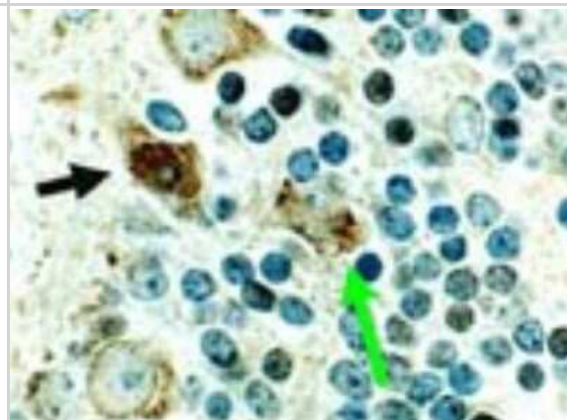


Images

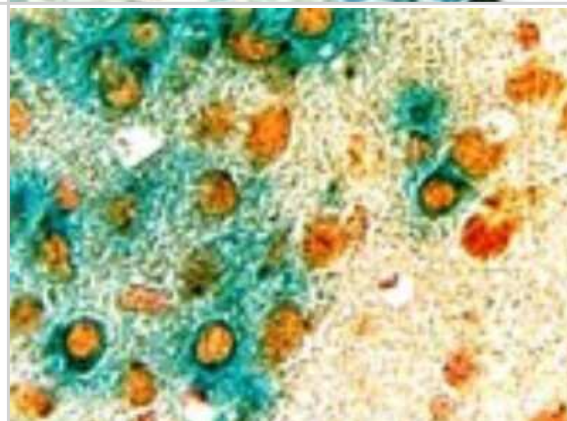
Western Blot: Cre Antibody [NBP1-47646] - Analysis of Cre at 1:2000. Lane 1, HeLa cells stably transfected with a CRE expression plasmid. Lane 2, HeLa cells transfected with a neo plasmid (negative control).



Immunohistochemistry-Paraffin: Cre Antibody [NBP1-47646] - Immunohistochemical analysis of Cre in a formalin-fixed, paraffin embedded tissue section from the cerebellum of a Cre transgenic mouse at 1:2000. In this mouse line, Cre is expressed in the brain, predominantly in the nuclei of most types of neurons. The arrow denotes an example of a stained neuron. Cre staining is also seen in the cytosol of cerebellar Purkinje cells. Hematoxylin-eosin counterstain.



Immunohistochemistry-Paraffin: Cre Antibody [NBP1-47646] - Immunohistochemical analysis of Cre in a formalin-fixed, paraffin embedded tissue section from the cerebellum of a Cre transgenic mouse at 1:2000. In this mouse line, Cre is expressed in brain neurons. This mouse line also contains a LacZ reporter gene that becomes transcriptionally active upon Cre-mediated recombination. Brain tissue slices were stained with X-gal (blue color) prior to embedding. Cre staining is brown. Nuclear Red counterstain.



Publications

Banares S, Zeh K, Krajewska M et al. Novel pan-neuronal Cre-transgenic line for conditional ablation of genes in the nervous system. *Genesis*. 2005-05-01 [PMID: 15828007] (WB)

Details:

1. IMG-5720 (AR-59A): WB., IHC-P. 2. IMG-5721 (AR-59B): WB, IHC-F. 3. IMG-5722 (AR-60A): IHC-P

Copple BL, Kaska S, Wentling C. Hypoxia-inducible factor activation in myeloid cells contributes to the development of liver fibrosis in cholestatic mice. *J Pharmacol Exp Ther*. 2012-05-01 [PMID: 22271822] (IHC-Fr, Mouse)

Details:

IHC (frozen): Fig 1B, D (mouse liver). The Cre antibody (IMG-5720. IMG-5721 or IMG-5722) was used at 1:4000.



Novus Biologicals USA

10730 E. Briarwood Avenue
Centennial, CO 80112
USA
Phone: 303.730.1950
Toll Free: 1.888.506.6887
Fax: 303.730.1966
nb-customerservice@bio-techne.com

Bio-Techne Canada

21 Canmotor Ave
Toronto, ON M8Z 4E6
Canada
Phone: 905.827.6400
Toll Free: 855.668.8722
Fax: 905.827.6402
canada.inquires@bio-techne.com

Bio-Techne Ltd

19 Barton Lane
Abingdon Science Park
Abingdon, OX14 3NB, United Kingdom
Phone: (44) (0) 1235 529449
Free Phone: 0800 37 34 15
Fax: (44) (0) 1235 533420
info.EMEA@bio-techne.com

General Contact Information

www.novusbio.com
Technical Support: nb-technical@bio-techne.com
Orders: nb-customerservice@bio-techne.com
General: novus@novusbio.com

Limitations

This product is for research use only and is not approved for use in humans or in clinical diagnosis. Primary Antibodies are guaranteed for 1 year from date of receipt.

For more information on our 100% guarantee, please visit www.novusbio.com/guarantee

Earn gift cards/discounts by submitting a review: www.novusbio.com/reviews/submit/NBP1-47646

Earn gift cards/discounts by submitting a publication using this product:
www.novusbio.com/publications

