

# Product Datasheet

## SOD1/Cu-Zn SOD Antibody (6F5)

### NBP1-47443

Unit Size: 0.1 ml

Store at 4C short term. Aliquot and store at -20C long term. Avoid freeze-thaw cycles.

[www.novusbio.com](http://www.novusbio.com)



[technical@novusbio.com](mailto:technical@novusbio.com)

**Reviews: 1 Publications: 10**

Protocols, Publications, Related Products, Reviews, Research Tools and Images at:  
[www.novusbio.com/NBP1-47443](http://www.novusbio.com/NBP1-47443)

Updated 12/9/2021 v.20.1

**Earn rewards for product reviews and publications.**

Submit a publication at [www.novusbio.com/publications](http://www.novusbio.com/publications)

Submit a review at [www.novusbio.com/reviews/destination/NBP1-47443](http://www.novusbio.com/reviews/destination/NBP1-47443)



**NBP1-47443****SOD1/Cu-Zn SOD Antibody (6F5)**

<b>Product Information</b>	
<b>Unit Size</b>	0.1 ml
<b>Concentration</b>	This product is unpurified. The exact concentration of antibody is not quantifiable.
<b>Storage</b>	Store at 4C short term. Aliquot and store at -20C long term. Avoid freeze-thaw cycles.
<b>Clonality</b>	Monoclonal
<b>Clone</b>	6F5
<b>Preservative</b>	0.03% Sodium Azide
<b>Isotype</b>	IgG1
<b>Purity</b>	Unpurified
<b>Buffer</b>	Ascites
<b>Target Molecular Weight</b>	18 kDa

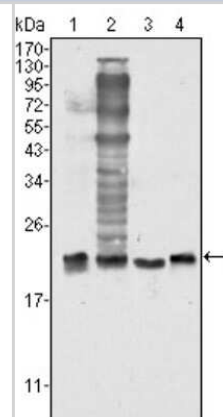
<b>Product Description</b>	
<b>Host</b>	Mouse
<b>Gene ID</b>	6647
<b>Gene Symbol</b>	SOD1
<b>Species</b>	Human, Mouse, Fish
<b>Reactivity Notes</b>	Fish reactivity reported in scientific literature (PMID: 26965749). Please note that this antibody is reactive to Mouse and derived from the same host, Mouse. Mouse-On-Mouse blocking reagent may be needed for IHC and ICC experiments to reduce high background signal. You can find these reagents under catalog numbers PK-2200-NB and MP-2400-NB. Please contact Technical Support if you have any questions.
<b>Immunogen</b>	Purified recombinant fragment of human SOD1 expressed in E. Coli.

<b>Product Application Details</b>	
<b>Applications</b>	Western Blot, ELISA, Flow Cytometry, Immunocytochemistry/ Immunofluorescence
<b>Recommended Dilutions</b>	Western Blot 1:500 - 1:2000, Flow Cytometry 1:200 - 1:400, ELISA 1:10000, Immunocytochemistry/ Immunofluorescence 1:200 - 1:1000

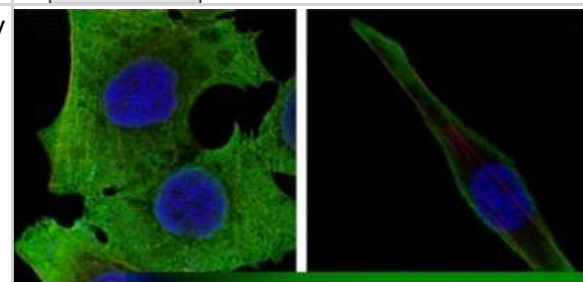


## Images

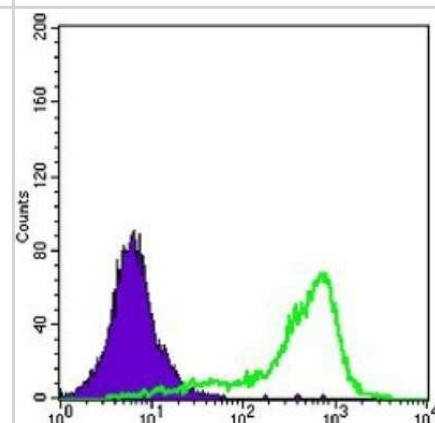
Western Blot: SOD1/Cu-Zn SOD Antibody (6F5) [NBP1-47443] - Analysis using SOD1 mouse mAb against Hela (1), NIH/3T3 (2), A549 (3) and A431 (4) cell lysate.



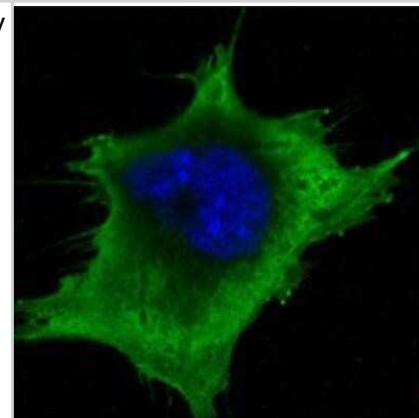
Immunocytochemistry/Immunofluorescence: SOD1/Cu-Zn SOD Antibody (6F5) [NBP1-47443] - Analysis of PANC-1 (left) and SKBR-3 (right) cells using SOD1 mouse mAb (green). Red: Actin filaments have been labeled with DY-554 phalloidin. Blue: DRAQ5 fluorescent DNA dye.



Flow Cytometry: SOD1/Cu-Zn SOD Antibody (6F5) [NBP1-47443] - Analysis of A431 cells using SOD1 mouse mAb (green) and negative control (purple).



Immunocytochemistry/Immunofluorescence: SOD1/Cu-Zn SOD Antibody (6F5) [NBP1-47443] - Analysis of 3T3-L1 cells using SOD1 mouse mAb (green). Blue: DRAQ5 fluorescent DNA dye.



## Publications

Bovio F, Sciandrone B, Urani C et al. Superoxide dismutase 1 (SOD1) and cadmium: a three models approach to the comprehension of its neurotoxic effects *Neurotoxicology* 2021-03-24 [PMID: 33774064] (WB)

Choi C, Song J, Choi Y et al. Effects of Green Wavelength Light on Antioxidant Responses in Olive Flounder *Paralichthys olivaceus* Exposed to Starvation and Re-feeding *Turkish Journal of Fisheries and Aquatic Sciences* 2020-06-11 (IHC-P, Fish)

Details:  
*Paralichthys olivaceus*

Tasca G, Lattante S, Marangi G et al. SOD1 p.D12Y variant is associated with amyotrophic lateral sclerosis/distal myopathy spectrum *Eur. J. Neurol.* 2020-04-06 [PMID: 32250500]

Choi JY, Kim TH, Choi YJ et al. Effects of various LED light spectra on antioxidant and immune response in juvenile rock bream, *Oplegnathus fasciatus* exposed to bisphenol A. *Environ Toxicol Pharmacol* 2016-07-01 [PMID: 27299659]

Kadam PD, Chuan HH. Erratum to: Rectocutaneous fistula with transmigration of the suture: a rare delayed complication of vault fixation with the sacrospinous ligament. *Int Urogynecol J.* 2016-03-01 [PMID: 26811110]

Details:  
This citation used the HRP version of this antibody.

Kim BS, Jung SJ, Choi YJ et al. Effects of different light wavelengths from LEDs on oxidative stress and apoptosis in olive flounder (*Paralichthys olivaceus*) at high water temperatures. *Fish Shellfish Immunol.* 2016-06-15 [PMID: 27320868] (WB)

Jung MM, Kim TH, Choi YJ, Kim NN. Variations in the antioxidant system and circadian rhythms of goldfish, *Carassius auratus*, exposed to ammonia: profile of the effects of green LED spectra. *Biological Rhythm Research.* 2016-01-01 (WB, Fish)

Details:  
SOD antibody was used at 1:4000 dilution for WB analysis of total protein isolated from the liver of goldfish, *Carassius auratus*. The antibody detected specific band of superoxide dismutase/SOD at 18 kDa position (Figure 2a).

Choi YJ, Choi JY, Yang SG, Kim BS. The effect of green and red light spectra and their intensity on the oxidative stress and non-specific immune responses in gold-striped amberjack, *Seriola lalandi*. *Marine and Freshwater Behaviour and Physiology.* 2016-04-07 (WB, Fish)

Details:  
SOD antibody was used at 1:2000 dilution for WB analysis of total protein isolated from the liver of gold-striped amberjack (*Seriola lalandi*). The antibody detected specific band of superoxide dismutase/SOD at 18 kDa position (Figure 2a)

Jung SJ, Choi YJ, Kim NN et al. Effects of melatonin injection or green-wavelength LED light on the antioxidant system in goldfish (*Carassius auratus*) during thermal stress. *Fish Shellfish Immunol.* 2016-03-08 [PMID: 26965749] (WB, Fish)

Roma A, Ovadje P, Steckle M et al. Selective Induction of Apoptosis by *Azadirachta indica* Leaf Extract by Targeting Oxidative Vulnerabilities in Human Cancer Cells. *J Pharm Pharm Sci.* 2015-11-01 [PMID: 26626256] (WB, Human)

Details:  
SOD1/Cu-Zn SOD antibody was used for WB analysis of lysates from Jurkat /E6-1 cells that were treated or not with aqueous or ethanolic *Azadirachta indica*/neem leaf extracts (Figure 7).



### **Novus Biologicals USA**

10730 E. Briarwood Avenue  
Centennial, CO 80112  
USA  
Phone: 303.730.1950  
Toll Free: 1.888.506.6887  
Fax: 303.730.1966  
nb-customerservice@bio-techne.com

### **Bio-Techne Canada**

21 Canmotor Ave  
Toronto, ON M8Z 4E6  
Canada  
Phone: 905.827.6400  
Toll Free: 855.668.8722  
Fax: 905.827.6402  
canada.inquires@bio-techne.com

### **Bio-Techne Ltd**

19 Barton Lane  
Abingdon Science Park  
Abingdon, OX14 3NB, United Kingdom  
Phone: (44) (0) 1235 529449  
Free Phone: 0800 37 34 15  
Fax: (44) (0) 1235 533420  
info.EMEA@bio-techne.com

### **General Contact Information**

[www.novusbio.com](http://www.novusbio.com)  
Technical Support: nb-technical@bio-techne.com  
Orders: nb-customerservice@bio-techne.com  
General: novus@novusbio.com

### **Limitations**

This product is for research use only and is not approved for use in humans or in clinical diagnosis. Primary Antibodies are guaranteed for 1 year from date of receipt.

For more information on our 100% guarantee, please visit [www.novusbio.com/guarantee](http://www.novusbio.com/guarantee)

Earn gift cards/discounts by submitting a review: [www.novusbio.com/reviews/submit/NBP1-47443](http://www.novusbio.com/reviews/submit/NBP1-47443)

Earn gift cards/discounts by submitting a publication using this product:  
[www.novusbio.com/publications](http://www.novusbio.com/publications)

