

Product Datasheet

actin-related protein 2/3 complex subunit 1B Antibody NBP1-46220

Unit Size: 0.1 ml

Store at 4C. Do not freeze.

www.novusbio.com



technical@novusbio.com

Protocols, Publications, Related Products, Reviews, Research Tools and Images at:
www.novusbio.com/NBP1-46220

Updated 10/23/2024 v.20.1

Earn rewards for product
reviews and publications.

Submit a publication at www.novusbio.com/publications

Submit a review at www.novusbio.com/reviews/destination/NBP1-46220



NBP1-46220

actin-related protein 2/3 complex subunit 1B Antibody

Product Information	
Unit Size	0.1 ml
Concentration	0.2 mg/ml
Storage	Store at 4C. Do not freeze.
Clonality	Polyclonal
Preservative	0.09% Sodium Azide
Isotype	IgG
Purity	Immunogen affinity purified
Buffer	TBS and 0.1% BSA

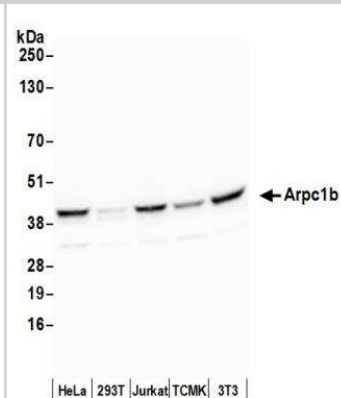
Product Description	
Host	Rabbit
Gene ID	10095
Gene Symbol	ARPC1B
Species	Human, Mouse
Immunogen	The immunogen for this product maps to a region between residue 322 and 372 of human Actin Related Protein 2/3 complex, Subunit 1B using the numbering given in entry NP_005711.1 (GeneID 10095).

Product Application Details	
Applications	Western Blot, Immunoprecipitation
Recommended Dilutions	Western Blot 1:2000-1:10000, Immunoprecipitation 2-10 ug/mg lysate
Application Notes	Western blot of lysates performed using standard western blot reagents and 4-20% SDS-PAGE.

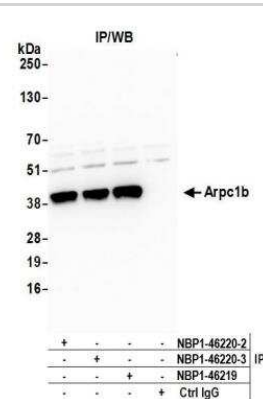


Images

Western Blot: actin-related protein 2/3 complex subunit 1B Antibody [NBP1-46220] - Detection of Human and Mouse Arpc1b by Western Blot.
Samples: Whole cell lysate (50 ug) from HeLa, 293T, Jurkat, mouse TCMK-1, and mouse NIH3T3 cells prepared using NETN lysis buffer.
Antibody: Affinity purified rabbit anti-Arpc1b antibody NBP1-46220 used for WB at 0.1 ug/ml. **Detection:** Chemiluminescence with an exposure time of 30 seconds.



Immunoprecipitation: actin-related protein 2/3 complex subunit 1B Antibody [NBP1-46220] - Detection of human Arpc1b by western blot of immunoprecipitates. **Samples:** Whole cell lysate (0.5 or 1.0 mg per IP reaction; 20% of IP loaded) from HeLa cells prepared using NETN lysis buffer. **Antibodies:** Affinity purified rabbit anti-Arpc1b antibody NBP1-46220 (lot NBP1-46220-3) used for IP at 6 ug per reaction. Arpc1b was also immunoprecipitated by a previous lot of this antibody (lot NBP1-46220-2) and rabbit anti-Arpc1b antibody NBP1-46219. For blotting immunoprecipitated Arpc1b, NBP1-46220 was used at 1 ug/ml. **Detection:** Chemiluminescence with an exposure time of 30 seconds.





Novus Biologicals USA

10730 E. Briarwood Avenue
Centennial, CO 80112
USA
Phone: 303.730.1950
Toll Free: 1.888.506.6887
Fax: 303.730.1966
nb-customerservice@bio-techne.com

Bio-Techne Canada

21 Canmotor Ave
Toronto, ON M8Z 4E6
Canada
Phone: 905.827.6400
Toll Free: 855.668.8722
Fax: 905.827.6402
canada.inquires@bio-techne.com

Bio-Techne Ltd

19 Barton Lane
Abingdon Science Park
Abingdon, OX14 3NB, United Kingdom
Phone: (44) (0) 1235 529449
Free Phone: 0800 37 34 15
Fax: (44) (0) 1235 533420
info.EMEA@bio-techne.com

General Contact Information

www.novusbio.com
Technical Support: nb-technical@bio-techne.com
Orders: nb-customerservice@bio-techne.com
General: novus@novusbio.com

Products Related to NBP1-46220

HAF008	Goat anti-Rabbit IgG Secondary Antibody [HRP]
NB7160	Goat anti-Rabbit IgG (H+L) Secondary Antibody [HRP]
NBP2-24891	Rabbit IgG Isotype Control
H00010095-P01-10ug	Recombinant Human actin-related protein 2/3 complex subunit 1B GST (N-Term) Protein

Limitations

This product is for research use only and is not approved for use in humans or in clinical diagnosis. Primary Antibodies are guaranteed for 1 year from date of receipt.

For more information on our 100% guarantee, please visit www.novusbio.com/guarantee

Earn gift cards/discounts by submitting a review: www.novusbio.com/reviews/submit/NBP1-46220

Earn gift cards/discounts by submitting a publication using this product:
www.novusbio.com/publications

