

Product Datasheet

PSMA/FOLH1/NAALADase I Antibody (GCP-05) [PE] NBP1-45056

Unit Size: 0.1 mg

Store at 4C in the dark.

www.novusbio.com



technical@novusbio.com

Protocols, Publications, Related Products, Reviews, Research Tools and Images at:
www.novusbio.com/NBP1-45056

Updated 10/23/2024 v.20.1

Earn rewards for product
reviews and publications.

Submit a publication at www.novusbio.com/publications

Submit a review at www.novusbio.com/reviews/destination/NBP1-45056



NBP1-45056

PSMA/FOLH1/NAALADase I Antibody (GCP-05) [PE]

Product Information	
Unit Size	0.1 mg
Concentration	0.1 mg/ml
Storage	Store at 4C in the dark.
Clonality	Monoclonal
Clone	GCP-05
Preservative	0.9% Sodium Azide
Isotype	IgG1
Conjugate	PE
Purity	Size Exclusion Chromatography
Buffer	Stabilizing phosphate buffered saline (PBS) solution.
Target Molecular Weight	110 kDa

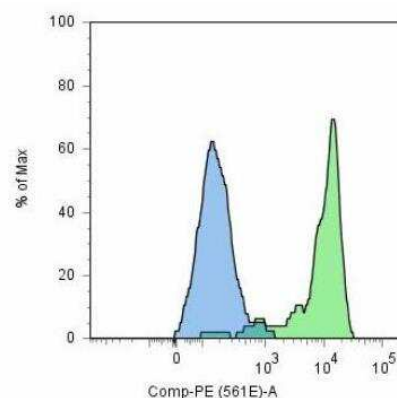
Product Description	
Description	Store in the dark. Avoid prolonged exposure to light.
Host	Mouse
Gene ID	2346
Gene Symbol	FOLH1
Species	Human
Specificity/Sensitivity	The antibody GCP-05 recognizes extracellular domain of glutamate carboxypeptidase II (NAALADase, FOLH1, PSMA), an approximately 95-110 kDa transmembrane glycoprotein expressed mainly in tumour neovasculatures, nervous system and jejunum, which is an important prostate tumour marker.
Immunogen	amino acids 44-750 of human GCPII

Product Application Details	
Applications	Flow Cytometry
Recommended Dilutions	Flow Cytometry 5 ug/ml



Images

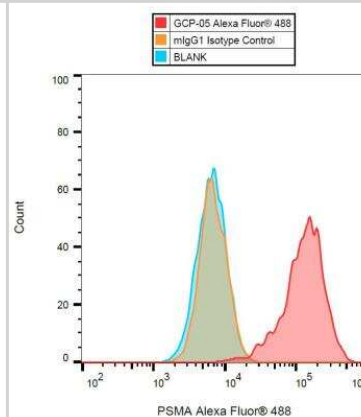
Flow Cytometry: PSMA/FOLH1/NAALADase I Antibody (GCP-05) [PE] [NBP1-45056] - Surface staining (flow cytometry) of GCPII / PSMA using anti-GCPII (GCP-05) and goat anti-mouse-PE on LNCaP cell line (positive, green) and HeLa cells (negative, blue).



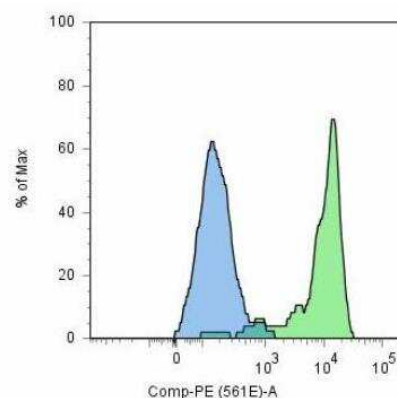
Flow Cytometry: PSMA/FOLH1/NAALADase I Antibody (GCP-05) [PE] [NBP1-45056] - Surface staining (mass cytometry) of LNCaP cell line using anti-GCPII (GCP-05) 173Yb. Gated on singlets.



Flow Cytometry: PSMA/FOLH1/NAALADase I Antibody (GCP-05) [PE] [NBP1-45056] - Surface staining (flow cytometry) of GCPII / PSMA using anti-GCPII (GCP-05) Alexa Fluor 488 on LNCaP cell line.



Flow Cytometry: PSMA/FOLH1/NAALADase I Antibody (GCP-05) [PE] [NBP1-45056] - Surface staining (flow cytometry) of GCPII / PSMA using anti-GCPII (GCP-05) PE on LNCaP cell line.





Novus Biologicals USA

10730 E. Briarwood Avenue
Centennial, CO 80112
USA
Phone: 303.730.1950
Toll Free: 1.888.506.6887
Fax: 303.730.1966
nb-customerservice@bio-techne.com

Bio-Techne Canada

21 Canmotor Ave
Toronto, ON M8Z 4E6
Canada
Phone: 905.827.6400
Toll Free: 855.668.8722
Fax: 905.827.6402
canada.inquires@bio-techne.com

Bio-Techne Ltd

19 Barton Lane
Abingdon Science Park
Abingdon, OX14 3NB, United Kingdom
Phone: (44) (0) 1235 529449
Free Phone: 0800 37 34 15
Fax: (44) (0) 1235 533420
info.EMEA@bio-techne.com

General Contact Information

www.novusbio.com
Technical Support: nb-technical@bio-techne.com
Orders: nb-customerservice@bio-techne.com
General: novus@novusbio.com

Products Related to NBP1-45056

NBP1-97005PE	Mouse IgG1 Isotype Control (MG1) [PE]
NBP3-12866-10ug	Recombinant Human PSMA/FOLH1/NAALADase I His Protein
DKK300	Kallikrein 3/PSA [HRP]
4234-ZN-010	PSMA/FOLH1/NAALADase I [Unconjugated]

Limitations

This product is for research use only and is not approved for use in humans or in clinical diagnosis. Primary Antibodies are guaranteed for 1 year from date of receipt.

For more information on our 100% guarantee, please visit www.novusbio.com/guarantee

Earn gift cards/discounts by submitting a review: www.novusbio.com/reviews/submit/NBP1-45056

Earn gift cards/discounts by submitting a publication using this product:
www.novusbio.com/publications

