

Product Datasheet

SLC12A3 Antibody - BSA Free NBP1-44270

Unit Size: 0.1 ml

Store at 4C short term. Aliquot and store at -20C long term. Avoid freeze-thaw cycles.

www.novusbio.com



technical@novusbio.com

Publications: 1

Protocols, Publications, Related Products, Reviews, Research Tools and Images at:
www.novusbio.com/NBP1-44270

Updated 2/21/2025 v.20.1

Earn rewards for product
reviews and publications.

Submit a publication at www.novusbio.com/publications

Submit a review at www.novusbio.com/reviews/destination/NBP1-44270



NBP1-44270

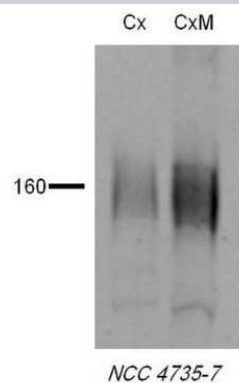
SLC12A3 Antibody - BSA Free

Product Information	
Unit Size	0.1 ml
Concentration	1 mg/ml
Storage	Store at 4C short term. Aliquot and store at -20C long term. Avoid freeze-thaw cycles.
Clonality	Polyclonal
Preservative	0.09% Sodium Azide
Isotype	IgG
Purity	Affinity purified
Buffer	PBS, 50% Glycerol
Product Description	
Host	Rabbit
Gene ID	6559
Gene Symbol	SLC12A3
Species	Human, Mouse, Rat, Canine
Reactivity Notes	Mouse reactivity reported in scientific literature (PMID: 31630621).
Specificity/Sensitivity	Detects approx 160kDa.
Immunogen	Produced against a synthetic peptide mapping to a segment of rat NCC (amino acids 74-95), N-terminal
Product Application Details	
Applications	Western Blot, Electron Microscopy, Immunocytochemistry/ Immunofluorescence, Immunohistochemistry, Immunohistochemistry-Paraffin
Recommended Dilutions	Western Blot 1:1000, Immunohistochemistry 1:200, Immunocytochemistry/ Immunofluorescence 1:10-1:2000, Immunohistochemistry-Paraffin 1:200, Electron Microscopy 1:10-1:500
Application Notes	1 ug/ml of NCC Antibody was sufficient for detection of NCC3 in 10 ug of rat kidney tissue lysate by colorimetric immunoblot analysis using Goat anti-rabbit IgG:HRP as the secondary Antibody.

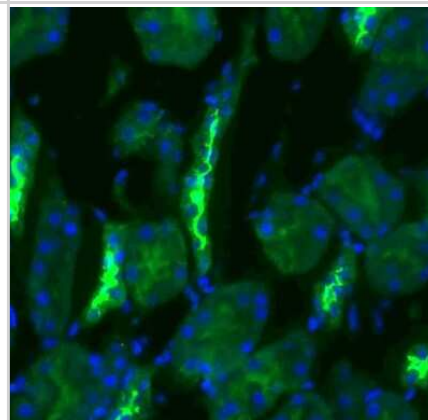


Images

Western Blot: SLC12A3 Antibody [NBP1-44270] - Western blot analysis of Rat tissue lysates showing detection of SLC12A3 protein using Rabbit Anti-SLC12A3 Polyclonal Antibody (NBP1-44270). Primary Antibody: Rabbit Anti-SLC12A3 Polyclonal Antibody (NBP1-44270) at 1:1000.



Immunohistochemistry: SLC12A3 Antibody [NBP1-44270] - Immunohistochemistry analysis using Rabbit Anti-SLC12A3 Polyclonal Antibody (NBP1-44270). Tissue: kidney tissue. Species: Rat. Primary Antibody: Rabbit Anti-SLC12A3 Polyclonal Antibody (NBP1-44270) at 1:200. Secondary Antibody: FITC Goat Anti-Rabbit (green).



Publications

Lu X, Rudemiller NP, Wen Y et al. A20 in Myeloid Cells Protects Against Hypertension by Inhibiting Dendritic Cell-Mediated T Cell Activation *Circ. Res.* 2019-10-21 [PMID: 31630621] (WB, Mouse)



Novus Biologicals USA

10730 E. Briarwood Avenue
Centennial, CO 80112
USA
Phone: 303.730.1950
Toll Free: 1.888.506.6887
Fax: 303.730.1966
nb-customerservice@bio-techne.com

Bio-Techne Canada

21 Canmotor Ave
Toronto, ON M8Z 4E6
Canada
Phone: 905.827.6400
Toll Free: 855.668.8722
Fax: 905.827.6402
canada.inquires@bio-techne.com

Bio-Techne Ltd

19 Barton Lane
Abingdon Science Park
Abingdon, OX14 3NB, United Kingdom
Phone: (44) (0) 1235 529449
Free Phone: 0800 37 34 15
Fax: (44) (0) 1235 533420
info.EMEA@bio-techne.com

General Contact Information

www.novusbio.com
Technical Support: nb-technical@bio-techne.com
Orders: nb-customerservice@bio-techne.com
General: novus@novusbio.com

Products Related to NBP1-44270

HAF008	Goat anti-Rabbit IgG Secondary Antibody [HRP]
NB7160	Goat anti-Rabbit IgG (H+L) Secondary Antibody [HRP]
NBP2-24891	Rabbit IgG Isotype Control
NBP1-86376PEP	SLC12A3 Recombinant Protein Antigen

Limitations

This product is for research use only and is not approved for use in humans or in clinical diagnosis. Primary Antibodies are guaranteed for 1 year from date of receipt.

For more information on our 100% guarantee, please visit www.novusbio.com/guarantee

Earn gift cards/discounts by submitting a review: www.novusbio.com/reviews/submit/NBP1-44270

Earn gift cards/discounts by submitting a publication using this product:
www.novusbio.com/publications

