

Product Datasheet

Integrin beta 3/CD61 Antibody (VI-PL2) NBP1-43394-0.1mg

Unit Size: 0.1 mg

Store at 4C. Do not freeze.

www.novusbio.com



technical@novusbio.com

Protocols, Publications, Related Products, Reviews, Research Tools and Images at:
www.novusbio.com/NBP1-43394

Updated 7/14/2021 v.20.1

Earn rewards for product
reviews and publications.

Submit a publication at www.novusbio.com/publications

Submit a review at www.novusbio.com/reviews/destination/NBP1-43394



NBP1-43394-0.1mg

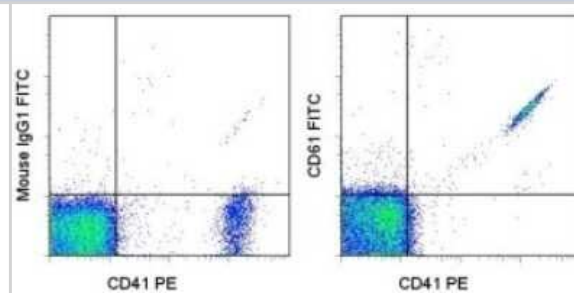
Integrin beta 3/CD61 Antibody (VI-PL2)

Product Information	
Unit Size	0.1 mg
Concentration	0.5 mg/ml
Storage	Store at 4C. Do not freeze.
Clonality	Monoclonal
Clone	VI-PL2
Preservative	0.09% Sodium Azide
Isotype	IgG1 Kappa
Purity	Protein A or G purified
Buffer	PBS (pH 7.2)
Product Description	
Host	Mouse
Gene ID	3690
Gene Symbol	ITGB3
Species	Human
Reactivity Notes	This antibody is reactive to Human. This VI-PL2 antibody has also been shown to crossreact with canine and several non-human primate species, including baboon, rhesus, and cynomolgus monkey.
Specificity/Sensitivity	The VI-PL2 monoclonal antibody reacts with human CD61, also known as integrin beta 3 and GPIIIa.
Immunogen	The immunogen for this antibody was CD61.
Product Application Details	
Applications	Western Blot, Flow Cytometry, Immunohistochemistry, Immunohistochemistry-Frozen
Recommended Dilutions	Western Blot 1:100-1:2000, Flow Cytometry <0.125 ug/10 ⁶ cells, Immunohistochemistry 1:10-1:500, Immunohistochemistry-Frozen 1:10-1:500
Application Notes	This VI-PL2 antibody has been tested by flow cytometric analysis of human peripheral blood platelets. This can be used at less than or equal to 0.125 ug per test. Cell number should be determined empirically but can range from 10 ⁵ to 10 ⁸ cells/test.

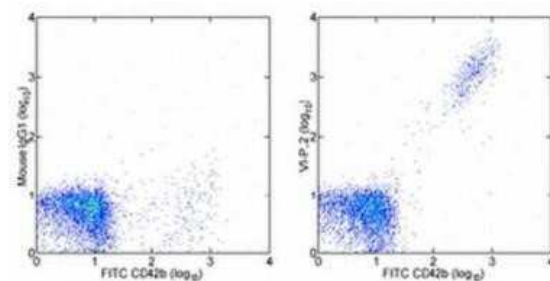


Images

Flow Cytometry: Integrin beta 3/CD61 Antibody (VI-PL2) [NBP1-43394] - Analysis using the FITC conjugate of NBP1-43394. Staining of human platelets with Anti-Human CD41 PE and Mouse IgG1 K Isotype Control FITC (left) or Anti-Human CD61 (Integrin beta 3) FITC (right). Total viable cells were used for analysis.



Flow Cytometry: Integrin beta 3/CD61 Antibody (VI-PL2) [NBP1-43394] - Staining of normal human peripheral blood platelets with 0.06 ug of Mouse IgG1 kappa Isotype Control Purified (NBP1-43319) (left) or 0.06 ug of Anti-Human CD61 (Integrin beta 3) Purified (right) followed by 'F(ab')₂ Anti-Mouse IgG PE followed by Anti-Human CD42b FITC.





Novus Biologicals USA

10730 E. Briarwood Avenue
Centennial, CO 80112
USA
Phone: 303.730.1950
Toll Free: 1.888.506.6887
Fax: 303.730.1966
nb-customerservice@bio-techne.com

Bio-Techne Canada

21 Canmotor Ave
Toronto, ON M8Z 4E6
Canada
Phone: 905.827.6400
Toll Free: 855.668.8722
Fax: 905.827.6402
canada.inquires@bio-techne.com

Bio-Techne Ltd

19 Barton Lane
Abingdon Science Park
Abingdon, OX14 3NB, United Kingdom
Phone: (44) (0) 1235 529449
Free Phone: 0800 37 34 15
Fax: (44) (0) 1235 533420
info.EMEA@bio-techne.com

General Contact Information

www.novusbio.com
Technical Support: nb-technical@bio-
techne.com
Orders: nb-customerservice@bio-techne.com
General: novus@novusbio.com

Limitations

This product is for research use only and is not approved for use in humans or in clinical diagnosis. Primary Antibodies are guaranteed for 1 year from date of receipt.

For more information on our 100% guarantee, please visit www.novusbio.com/guarantee

Earn gift cards/discounts by submitting a review: www.novusbio.com/reviews/submit/NBP1-43394

Earn gift cards/discounts by submitting a publication using this product:
www.novusbio.com/publications

