

Product Datasheet

HLA-E Antibody (3D12HLA-E)

NBP1-43124-0.1mg

Unit Size: 0.1 mg

Store at 4C. Do not freeze.

www.novusbio.com



technical@novusbio.com

Protocols, Publications, Related Products, Reviews, Research Tools and Images at:
www.novusbio.com/NBP1-43124

Updated 6/17/2021 v.20.1

Earn rewards for product
reviews and publications.

Submit a publication at www.novusbio.com/publications

Submit a review at www.novusbio.com/reviews/destination/NBP1-43124



NBP1-43124-0.1mg

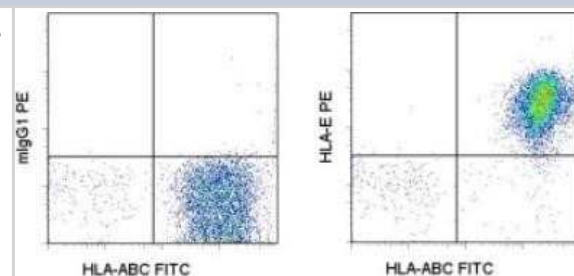
HLA-E Antibody (3D12HLA-E)

Product Information	
Unit Size	0.1 mg
Concentration	5 mg/ml
Storage	Store at 4C. Do not freeze.
Clonality	Monoclonal
Clone	3D12HLA-E
Preservative	0.09% Sodium Azide
Isotype	IgG1 Kappa
Purity	Protein A or G purified
Buffer	PBS (pH 7.2)
Product Description	
Host	Mouse
Gene ID	3133
Gene Symbol	HLA-E
Species	Human
Immunogen	The immunogen for this antibody was HLA-E.
Product Application Details	
Applications	Western Blot, Flow Cytometry, Immunoprecipitation
Recommended Dilutions	Western Blot 1:100-1:2000, Flow Cytometry 1:10-1:1000, Immunoprecipitation 1:10-1:500
Application Notes	This 3D12 (HLA-E) antibody has been tested by flow cytometric analysis of normal human peripheral blood cells. This can be used at less than or equal to 1 ug per test. Cell number should be determined empirically but can range from 10 ⁵ to 10 ⁸ cells/test.

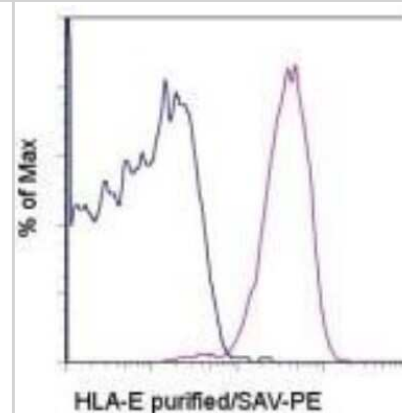


Images

Flow Cytometry: HLA-E Antibody (3D12HLA-E) [NBP1-43124] - Analysis using the PE conjugate of NBP1-43124. Staining of normal human peripheral blood cells with Anti-Human HLA-ABC FITC and Mouse IgG1 kappa Isotype Control PE (left) or Anti-Human HLA-E PE (right). Cells in the lymphocyte gate were used for analysis.



Flow Cytometry: HLA-E Antibody (3D12HLA-E) [NBP1-43124] - Staining of normal human peripheral blood cells with 0.5 micrograms of Mouse IgG1 k Isotype Control Purified (open histogram) or 0.5 micrograms of Anti-Human HLA-E Purified (filled histogram) followed by Anti-Mouse IgG Biotin and Streptavidin PE. Cells in the lymphocyte gate were used for analysis.





Novus Biologicals USA

10730 E. Briarwood Avenue
Centennial, CO 80112
USA
Phone: 303.730.1950
Toll Free: 1.888.506.6887
Fax: 303.730.1966
nb-customerservice@bio-techne.com

Bio-Techne Canada

21 Canmotor Ave
Toronto, ON M8Z 4E6
Canada
Phone: 905.827.6400
Toll Free: 855.668.8722
Fax: 905.827.6402
canada.inquires@bio-techne.com

Bio-Techne Ltd

19 Barton Lane
Abingdon Science Park
Abingdon, OX14 3NB, United Kingdom
Phone: (44) (0) 1235 529449
Free Phone: 0800 37 34 15
Fax: (44) (0) 1235 533420
info.EMEA@bio-techne.com

General Contact Information

www.novusbio.com
Technical Support: nb-technical@bio-techne.com
Orders: nb-customerservice@bio-techne.com
General: novus@novusbio.com

Limitations

This product is for research use only and is not approved for use in humans or in clinical diagnosis. Primary Antibodies are guaranteed for 1 year from date of receipt.

For more information on our 100% guarantee, please visit www.novusbio.com/guarantee

Earn gift cards/discounts by submitting a review: www.novusbio.com/reviews/submit/NBP1-43124

Earn gift cards/discounts by submitting a publication using this product:
www.novusbio.com/publications

