

Product Datasheet

HLA G Antibody (87G) - BSA Free NBP1-43123-0.1mg

Unit Size: 0.1 mg

Store at 4C short term. Aliquot and store at -20C long term. Avoid freeze-thaw cycles.

www.novusbio.com



technical@novusbio.com

Publications: 13

Protocols, Publications, Related Products, Reviews, Research Tools and Images at:
www.novusbio.com/NBP1-43123

Updated 7/10/2024 v.20.1

Earn rewards for product
reviews and publications.

Submit a publication at www.novusbio.com/publications

Submit a review at www.novusbio.com/reviews/destination/NBP1-43123



NBP1-43123-0.1mg

HLA G Antibody (87G) - BSA Free

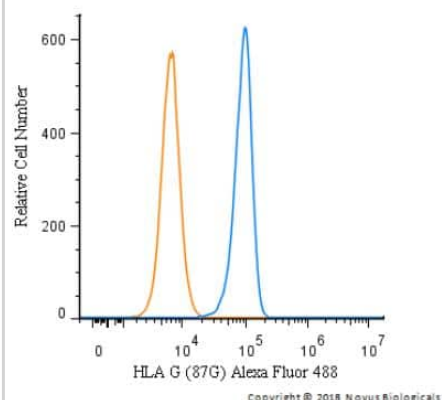
Product Information	
Unit Size	0.1 mg
Concentration	1.0 mg/ml
Storage	Store at 4C short term. Aliquot and store at -20C long term. Avoid freeze-thaw cycles.
Clonality	Monoclonal
Clone	87G
Preservative	0.02% Sodium Azide
Isotype	IgG2a Kappa
Purity	Protein G purified
Buffer	PBS
Target Molecular Weight	39 kDa

Product Description	
Host	Mouse
Gene ID	3135
Gene Symbol	HLA-G
Species	Human
Reactivity Notes	Use in Human reported in scientific literature (PMID:34201301).
Specificity/Sensitivity	Membrane bound HLA G1 and soluble HLA G5.
Immunogen	721.221 cells transfected with full length HLA G cDNA with high surface HLA G Antibody (87G) expression. [UniProt# P17693]

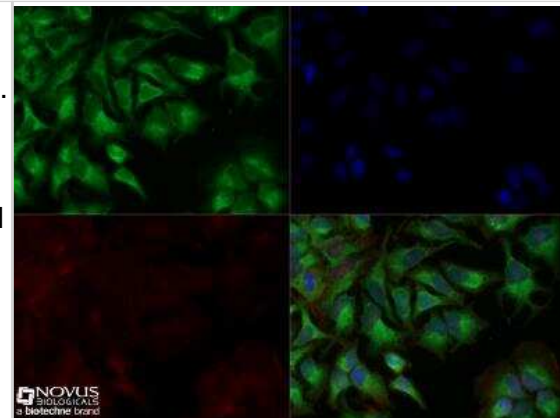
Product Application Details	
Applications	ELISA, Flow Cytometry, Flow (Cell Surface), Immunocytochemistry/ Immunofluorescence, Immunohistochemistry, Immunohistochemistry-Frozen, Block/Neutralize, CyTOF-ready
Recommended Dilutions	Flow Cytometry 1 ug per million cells. Use reported in scientific literature (PMID 34201301), ELISA, Immunohistochemistry reported in scientific literature (PMID 34201301), Immunocytochemistry/ Immunofluorescence 1:100, Immunohistochemistry-Frozen, Flow (Cell Surface), CyTOF-ready, Block/Neutralize

Images

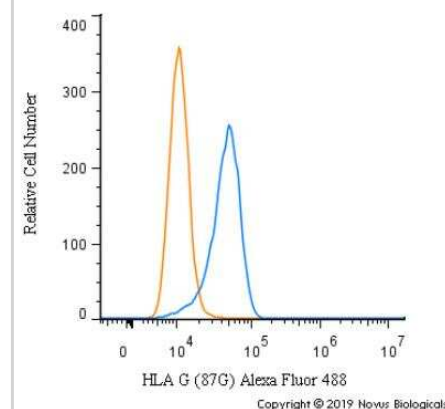
Flow Cytometry: HLA G Antibody (87G) [NBP1-43123] - An intracellular stain was performed on Hek293 cells with HLA G Antibody [87G] NBP1-43123AF488 (blue) and a matched isotype control (orange). Both antibodies were conjugated to Alexa Fluor 488. Cells were fixed with 4% PFA and then permeabilized with 0.1% saponin. Cells were incubated in an antibody dilution of 5 ug/mL for 30 minutes at room temperature.



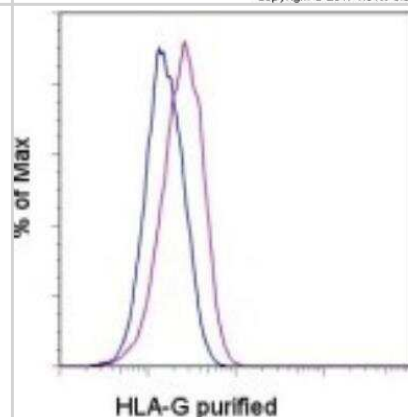
Immunocytochemistry/Immunofluorescence: HLA G Antibody (87G) [NBP1-43123] - HeLa cells were fixed for 10 minutes using 10% formalin and then permeabilized for 5 minutes using 1X TBS + 0.5% Triton X-100. The cells were incubated with anti HLA G (87G) at a 1:200 dilution overnight at 4C and detected with an anti-mouse DyLight 488 (Green) at a 1:500 dilution. Actin was detected with Phalloidin 568 (Red) at a 1:200 dilution. Nuclei were counterstained with DAPI (Blue). Cells were imaged using a 40X objective.



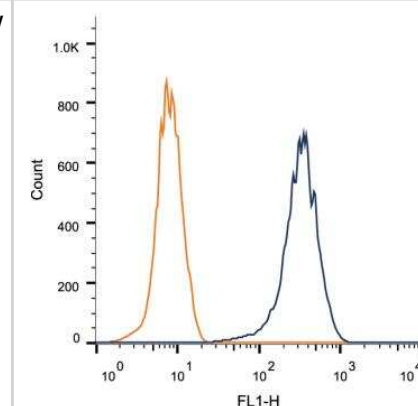
Flow Cytometry: HLA G Antibody (87G) [NBP1-43123] - An intracellular stain was performed on HeLa cells with HLA G [87G] Antibody NBP1-43123AF488 (blue) and a matched isotype control (orange). Cells were fixed with 4% PFA and then permeabilized with 0.1% saponin. Cells were incubated in an antibody dilution of 5 ug/mL for 30 minutes at room temperature. Both antibodies were conjugated to Alexa Fluor 488.



Flow Cytometry: HLA G Antibody (87G) [NBP1-43123] - Staining of stimulated U937 cells with 0.25 ug of Mouse IgG2a K Isotype Control Purified (blue) or 0.25 ug of Anti-Human HLA-G Purified (purple) followed by F(ab')₂ Anti-Mouse IgG PE. Total viable cells were used for analysis.



Flow Cytometry: HLA G Antibody (87G) [NBP1-43123] - Intracellular flow cytometric staining of 1×10^6 HEK-293 cells using HLA G antibody (dark blue) and isotype control (orange). An antibody concentration of 1 ug/ 1×10^6 cells was used.



Publications

- Mestrallet G, Carosella ED, Martin MT et al. Immunosuppressive Properties of Epidermal Keratinocytes Differ According to Their Immaturity Status *Frontiers in immunology* 2022-02-11 [PMID: 35222373] (FLOW, Human)
- Levy S, Somasundaram L, Raj IX et al. dCas9 fusion to computer-designed PRC2 inhibitor reveals functional TATA box in distal promoter region *Cell reports* 2022-03-01 [PMID: 35235780] (ICC/IF, WB, Human)
- Mestrallet G, AuvrE F, Schenowitz C et al. Human Keratinocytes Inhibit CD4+ T-Cell Proliferation through TGFB1 Secretion and Surface Expression of HLA-G1 and PD-L1 Immune Checkpoints *Cells* 2021-06-08 [PMID: 34201301] (IF/IHC, FLOW, Human)
- Paul P, Cabestre F A et al. Heterogeneity of HLA-G gene transcription and protein expression in malignant melanoma biopsies. *Cancer Res* 1999-04-15 [PMID: 10213506] (ICC/IF, Human)
- Dissanayake K, Nomm M, LAttekivi F et al. Individually cultured bovine embryos produce extracellular vesicles that have the potential to be used as non-invasive embryo quality markers *Theriogenology* 2020-06-01 [PMID: 32259747] (Human)
- Hurks H, Valter M, Wilson L et al. Uveal melanoma: no expression of HLA-G. *Invest Ophthalmol Vis Sc* 2001 Dec [PMID: 11726606] (IHC-Fr)
- Ishitani A, Sageshima N, Lee N et al. Protein expression and peptide binding suggest unique and interacting functional roles for HLA-E, F, and G in maternal-placental immune recognition. *J Immunol.* 2003-08-01 [PMID: 12874228] (IF/IHC, Human)
- Lila N, Rouas-Freiss N, Dausset J et al. Soluble HLA-G protein secreted by allo-specific CD4+ T cells suppresses the allo-proliferative response: a CD4+ T cell regulatory mechanism. *Proc Natl Acad Sci U S A.* 2001-10-09 [PMID: 11572934] (ICC/IF, FLOW, Human)
- Hurks H, Valter M, Wilson L et al. Uveal melanoma: no expression of HLA-G. *Invest Ophthalmol Vis Sci.* 2001 Dec [PMID: 11726606] (IHC-Fr)
- Moreau P, Adrian-Cabestre F, Menier C et al. IL-10 selectively induces HLA-G expression in human trophoblasts and monocytes. *Int Immunol.* 1999-05-01 [PMID: 10330285] (FLOW, ICC/IF, Human)
- Lin A, Yan WH, Xu HH et al. HLA-G expression in human ovarian carcinoma counteracts NK cell function. *Ann Oncol.* 2007-11-01 [PMID: 17846022] (B/N, FLOW, Human)
- Le Gal FA, Riteau B, Sedlik C et al. HLA-G-mediated inhibition of antigen-specific cytotoxic T lymphocytes. *Int Immunol.* 1999-08-01 [PMID: 10421792] (FLOW, Human)
- More publications at <http://www.novusbio.com/NBP1-43123>





Novus Biologicals USA

10730 E. Briarwood Avenue
Centennial, CO 80112
USA
Phone: 303.730.1950
Toll Free: 1.888.506.6887
Fax: 303.730.1966
nb-customerservice@bio-techne.com

Bio-Techne Canada

21 Canmotor Ave
Toronto, ON M8Z 4E6
Canada
Phone: 905.827.6400
Toll Free: 855.668.8722
Fax: 905.827.6402
canada.inquires@bio-techne.com

Bio-Techne Ltd

19 Barton Lane
Abingdon Science Park
Abingdon, OX14 3NB, United Kingdom
Phone: (44) (0) 1235 529449
Free Phone: 0800 37 34 15
Fax: (44) (0) 1235 533420
info.EMEA@bio-techne.com

General Contact Information

www.novusbio.com
Technical Support: nb-technical@bio-techne.com
Orders: nb-customerservice@bio-techne.com
General: novus@novusbio.com

Limitations

This product is for research use only and is not approved for use in humans or in clinical diagnosis. Primary Antibodies are guaranteed for 1 year from date of receipt.

For more information on our 100% guarantee, please visit www.novusbio.com/guarantee

Earn gift cards/discounts by submitting a review: www.novusbio.com/reviews/submit/NBP1-43123

Earn gift cards/discounts by submitting a publication using this product:
www.novusbio.com/publications

