

# Product Datasheet

## TCR gamma/delta Antibody (B1.1) - BSA Free NBP1-43121-0.1mg

Unit Size: 0.1 mg

Store at 4C. Do not freeze.

[www.novusbio.com](http://www.novusbio.com)



[technical@novusbio.com](mailto:technical@novusbio.com)

Protocols, Publications, Related Products, Reviews, Research Tools and Images at:  
[www.novusbio.com/NBP1-43121](http://www.novusbio.com/NBP1-43121)

Updated 9/6/2024 v.20.1

Earn rewards for product  
reviews and publications.

Submit a publication at [www.novusbio.com/publications](http://www.novusbio.com/publications)

Submit a review at [www.novusbio.com/reviews/destination/NBP1-43121](http://www.novusbio.com/reviews/destination/NBP1-43121)



**NBP1-43121-0.1mg**

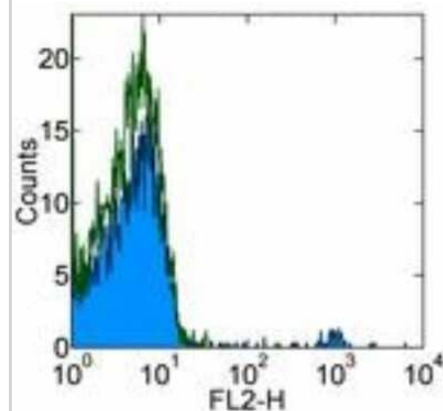
TCR gamma/delta Antibody (B1.1) - BSA Free

<b>Product Information</b>	
<b>Unit Size</b>	0.1 mg
<b>Concentration</b>	0.5 mg/ml
<b>Storage</b>	Store at 4C. Do not freeze.
<b>Clonality</b>	Monoclonal
<b>Clone</b>	B1.1
<b>Preservative</b>	0.09% Sodium Azide
<b>Isotype</b>	IgG1 Kappa
<b>Purity</b>	Protein A or G purified
<b>Buffer</b>	PBS (pH 7.2)
<b>Product Description</b>	
<b>Host</b>	Mouse
<b>Gene ID</b>	6965
<b>Gene Symbol</b>	TRG
<b>Species</b>	Human
<b>Immunogen</b>	The immunogen for this antibody was gamma delta TCR.
<b>Product Application Details</b>	
<b>Applications</b>	Flow Cytometry, Immunoprecipitation
<b>Recommended Dilutions</b>	Flow Cytometry 1:10-1:1000, Immunoprecipitation 1:10-1:500
<b>Application Notes</b>	The B1.1 antibody has been tested by flow cytometric analysis of human peripheral blood leukocytes. This can be used at less than or equal to 1 ug per test.

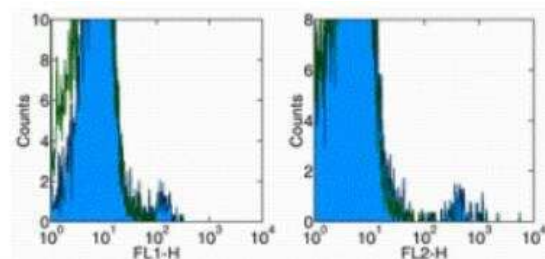


## Images

Flow Cytometry: TCR gamma/delta Antibody (B1.1) [NBP1-43121] - Analysis using the Biotin conjugate of NBP1-43121. Staining of normal human peripheral blood cells with 2 ug of Mouse IgG1 K Isotype Control Biotin (open histogram) or 2 ug of Anti-Human gamma delta TCR Biotin (filled histogram) followed by Streptavidin PE. Cells in the lymphocyte gate were used for analysis.



Flow Cytometry: TCR gamma/delta Antibody (B1.1) [NBP1-43121] - Surface staining of normal human peripheral blood cells with AntiHuman gamma delta TCR FITC (left) or PE (right). Appropriate isotype controls were used (open histogram). Cells in the lymphocyte gate were used for analysis.





### **Novus Biologicals USA**

10730 E. Briarwood Avenue  
Centennial, CO 80112  
USA  
Phone: 303.730.1950  
Toll Free: 1.888.506.6887  
Fax: 303.730.1966  
nb-customerservice@bio-techne.com

### **Bio-Techne Canada**

21 Canmotor Ave  
Toronto, ON M8Z 4E6  
Canada  
Phone: 905.827.6400  
Toll Free: 855.668.8722  
Fax: 905.827.6402  
canada.inquires@bio-techne.com

### **Bio-Techne Ltd**

19 Barton Lane  
Abingdon Science Park  
Abingdon, OX14 3NB, United Kingdom  
Phone: (44) (0) 1235 529449  
Free Phone: 0800 37 34 15  
Fax: (44) (0) 1235 533420  
info.EMEA@bio-techne.com

### **General Contact Information**

www.novusbio.com  
Technical Support: nb-technical@bio-techne.com  
Orders: nb-customerservice@bio-techne.com  
General: novus@novusbio.com

### **Limitations**

This product is for research use only and is not approved for use in humans or in clinical diagnosis. Primary Antibodies are guaranteed for 1 year from date of receipt.

For more information on our 100% guarantee, please visit [www.novusbio.com/guarantee](http://www.novusbio.com/guarantee)

Earn gift cards/discounts by submitting a review: [www.novusbio.com/reviews/submit/NBP1-43121](http://www.novusbio.com/reviews/submit/NBP1-43121)

Earn gift cards/discounts by submitting a publication using this product:  
[www.novusbio.com/publications](http://www.novusbio.com/publications)

