

# Product Datasheet

## TRPC6 Antibody (3F2.H10.F2) NBP1-42738

Unit Size: 0.1 mg

Store at -20C. Avoid freeze-thaw cycles.

[www.novusbio.com](http://www.novusbio.com)



[technical@novusbio.com](mailto:technical@novusbio.com)

Protocols, Publications, Related Products, Reviews, Research Tools and Images at:  
[www.novusbio.com/NBP1-42738](http://www.novusbio.com/NBP1-42738)

Updated 3/1/2021 v.20.1

Earn rewards for product  
reviews and publications.

Submit a publication at [www.novusbio.com/publications](http://www.novusbio.com/publications)

Submit a review at [www.novusbio.com/reviews/destination/NBP1-42738](http://www.novusbio.com/reviews/destination/NBP1-42738)



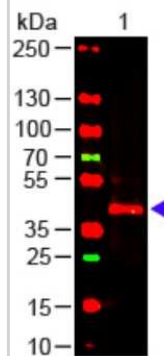
**NBP1-42738**

TRPC6 Antibody (3F2.H10.F2)

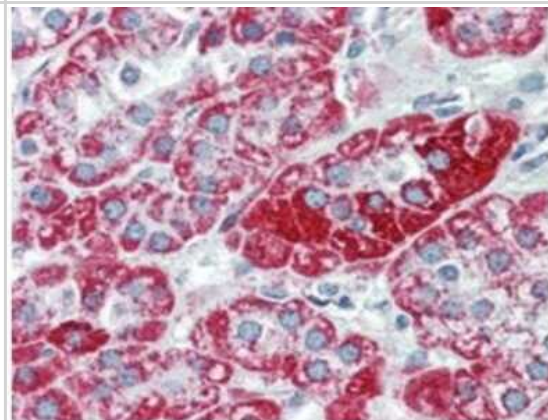
<b>Product Information</b>	
<b>Unit Size</b>	0.1 mg
<b>Concentration</b>	1 mg/ml
<b>Storage</b>	Store at -20C. Avoid freeze-thaw cycles.
<b>Clonality</b>	Monoclonal
<b>Clone</b>	3F2.H10.F2
<b>Preservative</b>	0.01% Sodium Azide
<b>Isotype</b>	IgG1 Kappa
<b>Purity</b>	Protein A purified
<b>Buffer</b>	0.02 M Potassium Phosphate, 0.15 M Sodium Chloride, pH 7.2
<b>Product Description</b>	
<b>Host</b>	Mouse
<b>Gene ID</b>	7225
<b>Gene Symbol</b>	TRPC6
<b>Species</b>	Human
<b>Reactivity Notes</b>	Chimpanzee 100%
<b>Specificity/Sensitivity</b>	A BLAST analysis was used to suggest cross-reactivity with TRPC6 from chimpanzee based on 100% identity with the immunizing sequence. Cross-reactivity with TRPC6 from other sources has not been determined.
<b>Immunogen</b>	This monoclonal antibody was produced by repeated immunizations with a synthetic peptide corresponding to a region near the carboxy terminus of human TRPC6 protein.
<b>Product Application Details</b>	
<b>Applications</b>	Western Blot, ELISA, Immunohistochemistry, Immunohistochemistry-Paraffin
<b>Recommended Dilutions</b>	Western Blot 1:500-1:2000, ELISA 1:10000-1:50000, Immunohistochemistry 2.5 ug/ml, Immunohistochemistry-Paraffin 1:10-1:500
<b>Application Notes</b>	Expect a band approximately 106 kDa in size corresponding - TRPC6 protein by western blotting in the appropriate cell lysate or extract. Use formalin-fixed paraffin-embedded sections for immunohistochemistry. No pre-treatment of sample is required. Strong staining was observed in adrenal, Purkinje neurons, cortical neurons, heart, ganglion cells, renal tubules, Sertoli cells, hepatocytes, skeletal muscle, exocrine pancreas, and germinal centers of lymphoid follicles. Moderate staining was observed in colon epithelium and plasma cells, B-lymphocytes, and parafollicular cells of the thyroid. Faint staining was seen in respiratory epithelium. Prostate and placenta were negative for staining. The antibody produced minimal - no background staining and appeared very specific at 2.5 ug/mL.

## Images

Western Blot: TRPC6 Antibody (3F2.H10.F2) [NBP1-42738] - Lane 1: Mouse Kidney WCL Load: 10 ug per lane Primary antibody: TRPC6 Antibody at 1:1000 for overnight at 4C Secondary antibody: DyLight 649 donkey anti-mouse at 1:20,000 for 30 min at RT Block: incubated with blocking buffer for 30 min at RT



Immunohistochemistry: TRPC6 Antibody (3F2.H10.F2) [NBP1-42738] - Analysis of TRPC6 in human adrenal (cortex) tissue (40X). The antibody was used a dilution to 2.5 ug/mL. The image shows strong staining with minimal background staining. Tissue was formalin fixed and paraffin embedded. No pre-treatment of sample was required. The image shows the localization of antibody as the precipitated red signal, with a hematoxylin purple nuclear counterstain.





### **Novus Biologicals USA**

10730 E. Briarwood Avenue  
Centennial, CO 80112  
USA  
Phone: 303.730.1950  
Toll Free: 1.888.506.6887  
Fax: 303.730.1966  
nb-customerservice@bio-techne.com

### **Bio-Techne Canada**

21 Canmotor Ave  
Toronto, ON M8Z 4E6  
Canada  
Phone: 905.827.6400  
Toll Free: 855.668.8722  
Fax: 905.827.6402  
canada.inquires@bio-techne.com

### **Bio-Techne Ltd**

19 Barton Lane  
Abingdon Science Park  
Abingdon, OX14 3NB, United Kingdom  
Phone: (44) (0) 1235 529449  
Free Phone: 0800 37 34 15  
Fax: (44) (0) 1235 533420  
info.EMEA@bio-techne.com

### **General Contact Information**

www.novusbio.com  
Technical Support: nb-technical@bio-techne.com  
Orders: nb-customerservice@bio-techne.com  
General: novus@novusbio.com

### **Limitations**

This product is for research use only and is not approved for use in humans or in clinical diagnosis. Primary Antibodies are guaranteed for 1 year from date of receipt.

For more information on our 100% guarantee, please visit [www.novusbio.com/guarantee](http://www.novusbio.com/guarantee)

Earn gift cards/discounts by submitting a review: [www.novusbio.com/reviews/submit/NBP1-42738](http://www.novusbio.com/reviews/submit/NBP1-42738)

Earn gift cards/discounts by submitting a publication using this product:  
[www.novusbio.com/publications](http://www.novusbio.com/publications)

