

Product Datasheet

Actin Antibody (647) NBP1-42279

Unit Size: 0.2 ml

Store at 4C short term. Aliquot and store at -20C long term. Avoid freeze-thaw cycles.

www.novusbio.com



technical@novusbio.com

Reviews: 1

Protocols, Publications, Related Products, Reviews, Research Tools and Images at:
www.novusbio.com/NBP1-42279

Updated 3/30/2022 v.20.1

**Earn rewards for product
reviews and publications.**

Submit a publication at www.novusbio.com/publications

Submit a review at www.novusbio.com/reviews/destination/NBP1-42279



NBP1-42279

Actin Antibody (647)

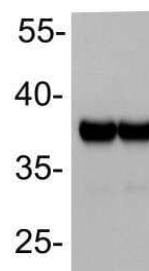
Product Information	
Unit Size	0.2 ml
Concentration	This product is unpurified. The exact concentration of antibody is not quantifiable.
Storage	Store at 4C short term. Aliquot and store at -20C long term. Avoid freeze-thaw cycles.
Clonality	Monoclonal
Clone	647
Preservative	0.1% Sodium Azide
Isotype	IgM
Purity	Tissue culture supernatant
Buffer	Tissue culture supernatant

Product Description	
Host	Mouse
Gene ID	58
Gene Symbol	ACTA1
Species	Human, Rat
Specificity/Sensitivity	In addition to the intermediate filaments, the cytoskeleton contains contractile micro filaments. These proteins occur in most cell types, but more abundantly in muscle cells and myoepithelial cells. There are three types of contractile proteins: actin, myosin and tubuli. This antibody reacts in immunoblots with one single protein band which corresponds to actin. Antigen origin: cell preparation of chicken skeletal muscle. Antigen location: cytoplasm.
Immunogen	The antibody reacts with the Actin antigen.

Product Application Details	
Applications	Western Blot, Immunohistochemistry, Immunohistochemistry-Frozen
Recommended Dilutions	Western Blot, Immunohistochemistry 1:10 - 1:500, Immunohistochemistry-Frozen 1:10 - 1:500
Application Notes	Not useful for paraffin embedded tissue. Working dilution of 1:5-1:10 is advised but the optimal dilution should be tested by serial dilution. Positive control: muscle, chicken myofibrils. This Actin Antibody is validated for Western blot from a verified customer review.

Images

Western Blot: Actin Antibody (647) [NBP1-42279] - Analysis of Actin in HeLa and HEK 293 cell lysates (30 ug/lane) using anti-Actin antibody. WB image submitted by a verified customer review.





Novus Biologicals USA

10730 E. Briarwood Avenue
Centennial, CO 80112
USA

Phone: 303.730.1950

Toll Free: 1.888.506.6887

Fax: 303.730.1966

nb-customerservice@bio-techne.com

Bio-Techne Canada

21 Canmotor Ave
Toronto, ON M8Z 4E6
Canada

Phone: 905.827.6400

Toll Free: 855.668.8722

Fax: 905.827.6402

canada.inquires@bio-techne.com

Bio-Techne Ltd

19 Barton Lane
Abingdon Science Park
Abingdon, OX14 3NB, United Kingdom

Phone: (44) (0) 1235 529449

Free Phone: 0800 37 34 15

Fax: (44) (0) 1235 533420

info.EMEA@bio-techne.com

General Contact Information

www.novusbio.com

Technical Support: nb-technical@bio-techne.com

Orders: nb-customerservice@bio-techne.com

General: novus@novusbio.com

Limitations

This product is for research use only and is not approved for use in humans or in clinical diagnosis. Primary Antibodies are guaranteed for 1 year from date of receipt.

For more information on our 100% guarantee, please visit www.novusbio.com/guarantee

Earn gift cards/discounts by submitting a review: www.novusbio.com/reviews/submit/NBP1-42279

Earn gift cards/discounts by submitting a publication using this product:
www.novusbio.com/publications

