

Product Datasheet

ER alpha/NR3A1 Antibody (1F3) NBP1-41192

Unit Size: 100 ul

Store at 4C short term. Aliquot and store at -20C long term. Avoid freeze-thaw cycles.

www.novusbio.com



technical@novusbio.com

Protocols, Publications, Related Products, Reviews, Research Tools and Images at:
www.novusbio.com/NBP1-41192

Updated 7/17/2023 v.20.1

Earn rewards for product
reviews and publications.

Submit a publication at www.novusbio.com/publications

Submit a review at www.novusbio.com/reviews/destination/NBP1-41192



NBP1-41192

ER alpha/NR3A1 Antibody (1F3)

Product Information	
Unit Size	100 ul
Concentration	Concentrations vary lot to lot. See vial label for concentration. If unlisted please contact technical services.
Storage	Store at 4C short term. Aliquot and store at -20C long term. Avoid freeze-thaw cycles.
Clonality	Monoclonal
Clone	1F3
Preservative	No Preservative
Isotype	IgG1
Purity	Protein G purified
Buffer	PBS
Target Molecular Weight	65 kDa

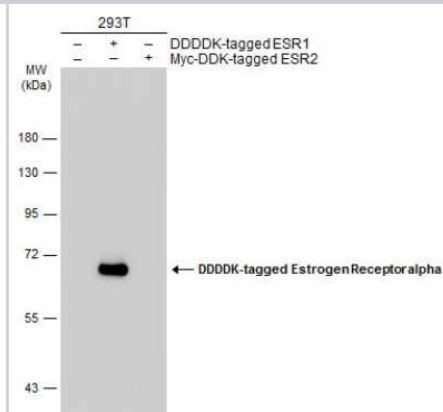
Product Description	
Host	Mouse
Gene ID	2099
Gene Symbol	ESR1
Species	Human, Rabbit
Reactivity Notes	Rabbit reactivity reported in scientific literature (PMID: 14972507).
Specificity/Sensitivity	This antibody will recognize human ER alpha.
Immunogen	The region encoding amino acids 1-190 expressed in E. coli.

Product Application Details	
Applications	Western Blot, Flow Cytometry, Immunohistochemistry, Immunohistochemistry-Frozen, Immunoprecipitation
Recommended Dilutions	Western Blot 1:500-1:3000, Flow Cytometry 1:10 - 1:1000, Immunohistochemistry 10 - 1:500, Immunoprecipitation 1-5 ug/ml, Immunohistochemistry-Frozen 1:10 - 1:500

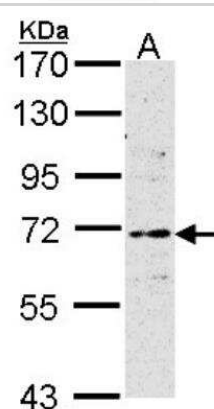


Images

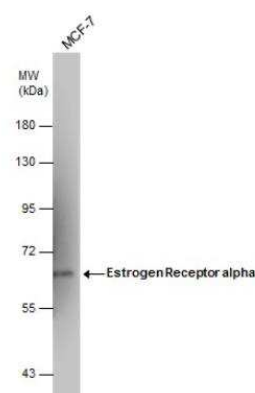
Western Blot: ER alpha/NR3A1 Antibody (1F3) [NBP1-41192] - Non-transfected (-) and transfected (+) 293T whole cell extracts (30 μ g) were separated by 7.5% SDS-PAGE, and the membrane was blotted with Estrogen Receptor alpha antibody diluted at 1:5000. HRP-conjugated anti-mouse IgG antibody was used to detect the primary antibody.



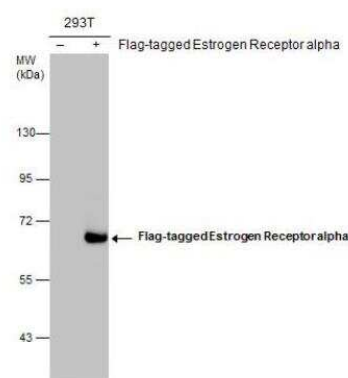
Western Blot: ER alpha/NR3A1 Antibody (1F3) [NBP1-41192] - Sample (30 μ g of whole cell lysate) A: MCF7 7. 5% SDS PAGE, antibody diluted at 1:500.



Western Blot: ER alpha/NR3A1 Antibody (1F3) [NBP1-41192] - Whole cell extract (60 μ g) was separated by 7.5% SDS-PAGE, and the membrane was blotted with Estrogen Receptor alpha antibody diluted at 1:500. The HRP-conjugated anti-mouse IgG antibody was used to detect the primary antibody, and the signal was developed with Trident femto Western HRP Substrate.



Western Blot: ER alpha/NR3A1 Antibody (1F3) [NBP1-41192] - Non-transfected (-) and transfected (+) 293T whole cell extracts (30 μ g) were separated by 7.5% SDS-PAGE, and the membrane was blotted with Estrogen Receptor alpha antibody [1F3] diluted at 1:500. The HRP-conjugated anti-mouse IgG antibody was used to detect the primary antibody.





Novus Biologicals USA

10730 E. Briarwood Avenue
Centennial, CO 80112
USA
Phone: 303.730.1950
Toll Free: 1.888.506.6887
Fax: 303.730.1966
nb-customerservice@bio-techne.com

Bio-Techne Canada

21 Canmotor Ave
Toronto, ON M8Z 4E6
Canada
Phone: 905.827.6400
Toll Free: 855.668.8722
Fax: 905.827.6402
canada.inquires@bio-techne.com

Bio-Techne Ltd

19 Barton Lane
Abingdon Science Park
Abingdon, OX14 3NB, United Kingdom
Phone: (44) (0) 1235 529449
Free Phone: 0800 37 34 15
Fax: (44) (0) 1235 533420
info.EMEA@bio-techne.com

General Contact Information

www.novusbio.com
Technical Support: nb-technical@bio-techne.com
Orders: nb-customerservice@bio-techne.com
General: novus@novusbio.com

Limitations

This product is for research use only and is not approved for use in humans or in clinical diagnosis. Primary Antibodies are guaranteed for 1 year from date of receipt.

For more information on our 100% guarantee, please visit www.novusbio.com/guarantee

Earn gift cards/discounts by submitting a review: www.novusbio.com/reviews/submit/NBP1-41192

Earn gift cards/discounts by submitting a publication using this product:
www.novusbio.com/publications

